

For Research Use Only

EIF2A/CDA02 Monoclonal antibody, PBS Only



Catalog Number: 66482-1-PBS

Featured Product

Basic Information

Catalog Number:

66482-1-PBS

Size:

1mg/ml

Source:

Mouse

Isotype:

IgG1

Immunogen Catalog Number:

AG22041

GenBank Accession Number:

BC011885

GeneID (NCBI):

83939

UNIPROT ID:

Q9BY44

Full Name:

eukaryotic translation initiation
factor 2A, 65kDa

Calculated MW:

65 kDa

Observed MW:

65 kDa

Purification Method:

Protein A purification

CloneNo.:

1G7H4

Applications

Tested Applications:

WB, IF, IHC, ELISA

Species Specificity:

Human, mouse, rat

Background Information

EIF2A, also named as CDA02, MSTP004 and MSTP089, belongs to the WD repeat EIF2A family. It functions in the early steps of protein synthesis of a small number of specific mRNAs. EIF2A, an alternative initiator tRNA-binding protein, has a key role in the translation of HCV mRNA during HCV infection, in turn promoting eIF2a phosphorylation by activating the eIF2a kinase PKR.

Storage

Storage:

Store at -80°C.

The product is shipped with ice packs. Upon receipt, store it immediately at -80°C

Storage Buffer:

PBS Only

For technical support and original validation data for this product please contact:

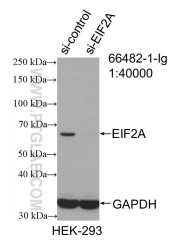
T: 4006900926

E: Proteintech-CN@ptglab.com

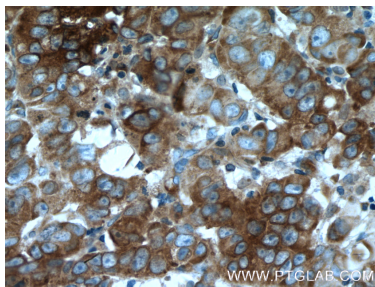
W: ptgcn.com

This product is exclusively available under Proteintech Group brand and is not available to purchase from any other manufacturer.

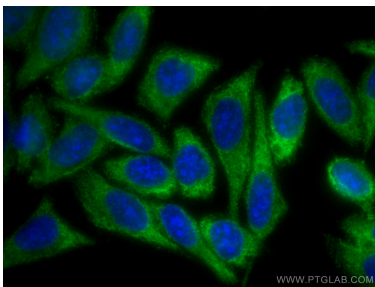
Selected Validation Data



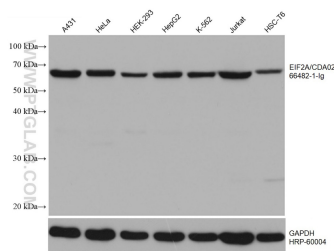
WB result of EIF2A/CDA02 antibody (66482-1-Ig; 1:40000; incubated at room temperature for 1.5 hours) with sh-Control and sh-EIF2A/CDA02 transfected HEK-293 cells. This data was developed using the same antibody clone with 66482-1-PBS in a different storage buffer formulation.



Immunohistochemical analysis of paraffin-embedded human prostate cancer tissue slide using 66482-1-Ig (EIF2A antibody) at dilution of 1:300 (under 40x lens). Heat mediated antigen retrieval with Tris-EDTA buffer (pH 9.0). This data was developed using the same antibody clone with 66482-1-PBS in a different storage buffer formulation.



Immunofluorescent analysis of (-20°C Methanol) fixed HepG2 cells using EIF2A/CDA02 antibody (66482-1-Ig, Clone: 1G7H4) at dilution of 1:400 and CoraLite®488-Conjugated AffiniPure Goat Anti-Mouse IgG(H+L). This data was developed using the same antibody clone with 66482-1-PBS in a different storage buffer formulation.



Various lysates were subjected to SDS PAGE followed by western blot with 66482-1-Ig (EIF2A/CDA02 antibody) at dilution of 1:10000 incubated at room temperature for 1.5 hours. The membrane was stripped and reblotted with HRP-conjugated GAPDH Monoclonal antibody (HRP-60004) as loading control. This data was developed using the same antibody clone with 66482-1-PBS in a different storage buffer formulation.