

For Research Use Only

EIF2A/CDA02 Monoclonal antibody

Catalog Number: 66482-1-Ig

Featured Product

2 Publications



Basic Information

Catalog Number:

66482-1-Ig

Size:

1000 ug/ml

Source:

Mouse

Isotype:

IgG1

Immunogen Catalog Number:

AG22041

GenBank Accession Number:

BC011885

GeneID (NCBI):

83939

UNIPROT ID:

Q9BY44

Full Name:

eukaryotic translation initiation factor 2A, 65kDa

Calculated MW:

65 kDa

Observed MW:

65 kDa

Purification Method:

Protein A purification

CloneNo.:

1G7H4

Recommended Dilutions:

WB 1:5000-1:50000

IHC 1:150-1:600

IF/ICC 1:200-1:800

Applications

Tested Applications:

WB, IHC, IF/ICC, ELISA

Cited Applications:

WB

Species Specificity:

human, mouse, rat

Cited Species:

human

Note-IHC: suggested antigen retrieval with TE buffer pH 9.0; (*) Alternatively, antigen retrieval may be performed with citrate buffer pH 6.0

Positive Controls:

WB : A431 cells, ROS1728 cells, HEK-293 cells, HeLa cells, HepG2 cells, K-562 cells, Jurkat cells, HSC-T6 cells

IHC : human prostate cancer tissue,

IF/ICC : HepG2 cells,

Background Information

EIF2A, also named as CDA02, MSTP004 and MSTP089, belongs to the WD repeat EIF2A family. It functions in the early steps of protein synthesis of a small number of specific mRNAs. EIF2A, an alternative initiator tRNA-binding protein, has a key role in the translation of HCV mRNA during HCV infection, in turn promoting eIF2a phosphorylation by activating the eIF2a kinase PKR.

Notable Publications

Author	Pubmed ID	Journal	Application
Yaoyao Bian	36121296	Pharm Biol	WB
Fahad Mubariz	37332877	Front Neurosci	WB

Storage

Storage:

Store at -20°C. Stable for one year after shipment.

Storage Buffer:

PBS with 0.02% sodium azide and 50% glycerol pH 7.3.

Aliquoting is unnecessary for -20°C storage

For technical support and original validation data for this product please contact:

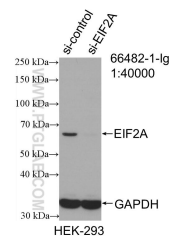
T: 4006900926

E: Proteintech-CN@ptglab.com

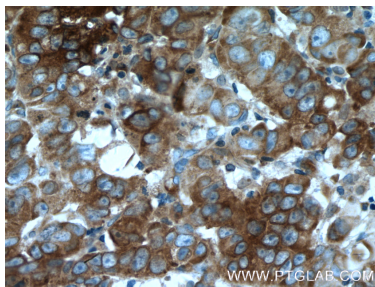
W: ptgcn.com

This product is exclusively available under Proteintech Group brand and is not available to purchase from any other manufacturer.

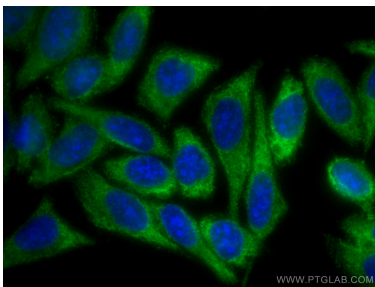
Selected Validation Data



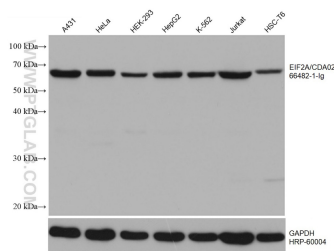
WB result of EIF2A/CDA02 antibody (66482-1-Ig; 1:40000; incubated at room temperature for 1.5 hours) with sh-Control and sh-EIF2A/CDA02 transfected HEK-293 cells.



Immunohistochemical analysis of paraffin-embedded human prostate cancer tissue slide using 66482-1-Ig (EIF2A antibody) at dilution of 1:300 (under 40x lens. Heat mediated antigen retrieval with Tris-EDTA buffer (pH 9.0).



Immunofluorescent analysis of (-20°C Methanol) fixed HepG2 cells using EIF2A/CDA02 antibody (66482-1-Ig, Clone: 1G7H4) at dilution of 1:400 and CoraLite®488-Conjugated AffiniPure Goat Anti-Mouse IgG(H+L).



Various lysates were subjected to SDS PAGE followed by western blot with 66482-1-Ig (EIF2A/CDA02 antibody) at dilution of 1:10000 incubated at room temperature for 1.5 hours. The membrane was stripped and reblotted with HRP-conjugated GAPDH Monoclonal antibody (HRP-60004) as loading control.