

For Research Use Only

SOD2 Monoclonal antibody, PBS Only (Capture)

Catalog Number: 66474-2-PBS



Basic Information

Catalog Number:

66474-2-PBS

Concentration:

1000 µg/ml

Source:

Mouse

Isotype:

IgG1

Immunogen Catalog Number:

AG21388

GenBank Accession Number:

BC016934

GeneID (NCBI):

6648

UNIPROT ID:

P04179

Full Name:

superoxide dismutase 2,
mitochondrial

Calculated MW:

25 kDa

Purification Method:

Protein G purification

CloneNo.:

2B3B7

Applications

Tested Applications:

Cytometric bead array, Sandwich ELISA, Indirect ELISA,
Sample test

Species Specificity:

human

Background Information

Storage

Storage:

Store at -80°C.

The product is shipped with ice packs. Upon receipt, store it immediately at -80°C

Storage Buffer:

PBS Only

For technical support and original validation data for this product please contact:

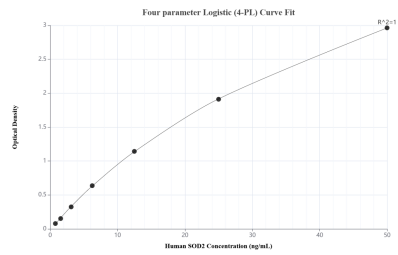
T: 4006900926

E: Proteintech-CN@ptglab.com

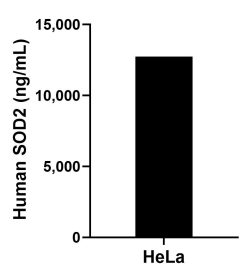
W: ptgcn.com

This product is exclusively available under Proteintech Group brand and is not available to purchase from any other manufacturer.

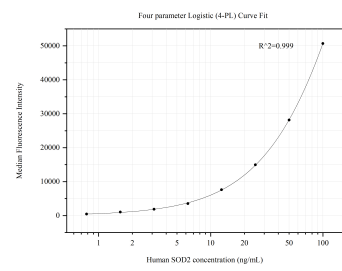
Selected Validation Data



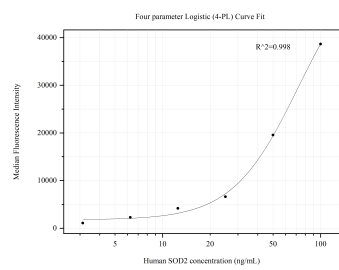
Sandwich ELISA standard curve of MP50535-2, Human SOD2 Monoclonal Matched Antibody Pair - PBS only. 66474-2-PBS was coated to a plate as the capture antibody and incubated with serial dilutions of standard Ag21388. 66474-4-PBS was HRP conjugated as the detection antibody. Range: 0.781-50 ng/mL



The mean SOD2 concentration was determined to be 12,745.00 ng/mL in HeLa cell extract based on a 1.80 mg/mL extract load.



Cytometric bead array standard curve of MP50535-1, SOD2 Monoclonal Matched Antibody Pair, PBS Only. Capture antibody: 66474-2-PBS. Detection antibody: 66474-3-PBS. Standard:Ag21388. Range: 0.781-100 ng/mL



Cytometric bead array standard curve of MP50535-2, SOD2 Monoclonal Matched Antibody Pair, PBS Only. Capture antibody: 66474-2-PBS. Detection antibody: 66474-4-PBS. Standard:Ag21388. Range: 3.125-100 ng/mL