

For Research Use Only

PSAP Monoclonal antibody

Catalog Number: 66473-1-Ig

Featured Product



Basic Information

Catalog Number:

66473-1-Ig

Size:

1300 ug/ml

Source:

Mouse

Isotype:

IgG1

Immunogen Catalog Number:

AG1194

GenBank Accession Number:

BC001503

GeneID (NCBI):

5660

UNIPROT ID:

P07602

Full Name:

prosaposin

Calculated MW:

58 kDa

Observed MW:

70 kDa

Purification Method:

Protein G purification

CloneNo.:

2F11B2

Recommended Dilutions:

WB 1:2500-1:10000

IHC 1:150-1:600

IF-P 1:200-1:800

IF/ICC 1:200-1:800

Applications

Tested Applications:

WB, IHC, IF/ICC, IF-P, ELISA

Species Specificity:

human

Note-IHC: suggested antigen retrieval with TE buffer pH 9.0; (*) Alternatively, antigen retrieval may be performed with citrate buffer pH 6.0

Positive Controls:

WB : human milk tissue, human milk, HepG2 cells, PC-3 cells, HeLa cells

IHC : human prostate cancer tissue,

IF-P : human prostate cancer tissue,

IF/ICC : HeLa cells,

Background Information

Storage

Storage:

Store at -20°C. Stable for one year after shipment.

Storage Buffer:

PBS with 0.02% sodium azide and 50% glycerol pH 7.3.

Aliquoting is unnecessary for -20°C storage

For technical support and original validation data for this product please contact:

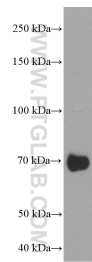
T: 4006900926

E: Proteintech-CN@ptglab.com

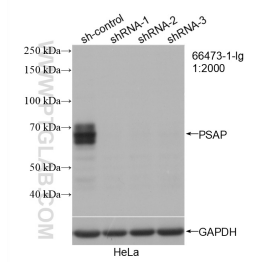
W: ptgcn.com

This product is exclusively available under Proteintech Group brand and is not available to purchase from any other manufacturer.

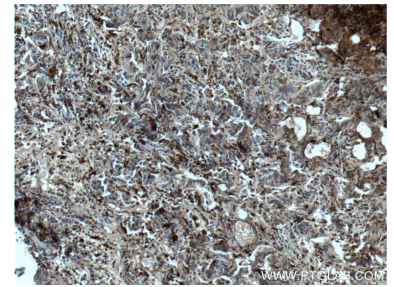
Selected Validation Data



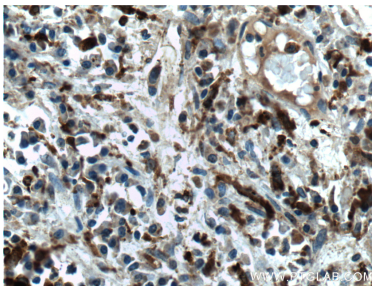
human milk were subjected to SDS PAGE followed by western blot with 66473-1-Ig (PSAP antibody) at dilution of 1:5000 incubated at room temperature for 1.5 hours.



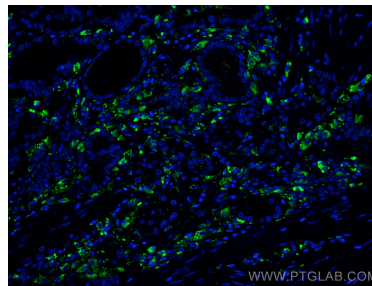
WB result of PSAP antibody (66473-1-Ig; 1:2000; incubated at room temperature for 1.5 hours) with sh-Control and sh-PSAP transfected HeLa cells.



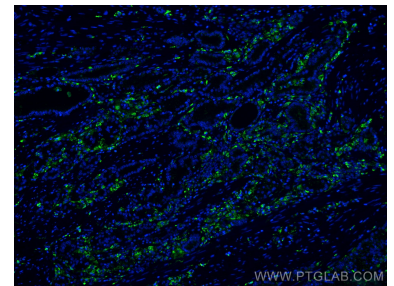
Immunohistochemical analysis of paraffin-embedded human prostate cancer tissue slide using 66473-1-Ig (PSAP antibody) at dilution of 1:300 (under 10x lens. Heat mediated antigen retrieval with Tris-EDTA buffer (pH 9.0).



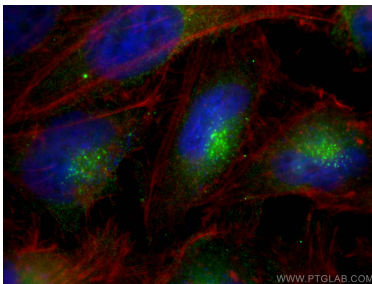
Immunohistochemical analysis of paraffin-embedded human prostate cancer tissue slide using 66473-1-Ig (PSAP antibody) at dilution of 1:300 (under 40x lens. Heat mediated antigen retrieval with Tris-EDTA buffer (pH 9.0).



Immunofluorescent analysis of (4% PFA) fixed human prostate cancer tissue using PSAP antibody (66473-1-Ig, Clone: 2F11B2) at dilution of 1:400 and CoraLite® 488-Conjugated AffiniPure Goat Anti-Mouse IgG(H+L).



Immunofluorescent analysis of (4% PFA) fixed human prostate cancer tissue using PSAP antibody (66473-1-Ig, Clone: 2F11B2) at dilution of 1:400 and CoraLite® 488-Conjugated AffiniPure Goat Anti-Mouse IgG(H+L).



Immunofluorescent analysis of (4% PFA) fixed HeLa cells using PSAP antibody (66473-1-Ig, Clone: 2F11B2) at dilution of 1:400 and Multi-rAb CoraLite® Plus 488-Goat Anti-Mouse Recombinant Secondary Antibody (H+L) (RGAM002), CL594-phalloidin (red).