

For Research Use Only

# LCP2 Monoclonal antibody, PBS Only (Capture)

Catalog Number:66465-2-PBS



## Basic Information

Catalog Number:

66465-2-PBS

Source:

Mouse

Isotype:

IgG1

Immunogen Catalog Number:

AG3432

GenBank Accession Number:

BC016618

GeneID (NCBI):

3937

UNIPROT ID:

Q13094

Full Name:

Lymphocyte cytosolic protein 2 (SH2 domain containing leukocyte protein of 76kDa)

Calculated MW:

533 aa, 60 kDa

Purification Method:

Protein G Magarose purification

CloneNo.:

1A12C6

## Applications

Tested Applications:

Cytometric bead array, Indirect ELISA

Species Specificity:

human

## Background Information

### Storage

Storage:

Store at -80°C.

**The product is shipped with ice packs. Upon receipt, store it immediately at -80°C**

Storage Buffer:

PBS only, pH7.3

For technical support and original validation data for this product please contact:

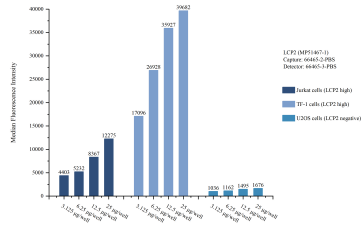
T: 4006900926

E: [Proteintech-CN@ptglab.com](mailto:Proteintech-CN@ptglab.com)

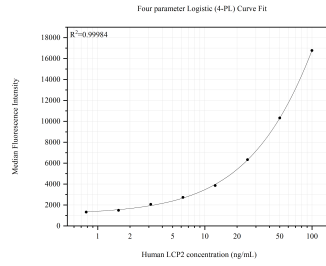
W: [ptgcn.com](http://ptgcn.com)

**This product is exclusively available under Proteintech Group brand and is not available to purchase from any other manufacturer.**

## Selected Validation Data



Cytometric bead array sample test of MP51467-1, LCP2 Monoclonal Matched Antibody Pair, PBS Only. Capture antibody: 66465-2-PBS. Detection antibody: 66465-3-PBS.



Cytometric bead array standard curve of MP51467-1, LCP2 Monoclonal Matched Antibody Pair, PBS Only. Capture antibody: 66465-2-PBS. Detection antibody: 66465-3-PBS. Standard: Ag3432. Range: 0.781-100 ng/mL.