

For Research Use Only

SLP76 Monoclonal antibody

Catalog Number: 66465-1-Ig **1 Publications**



Basic Information

Catalog Number: 66465-1-Ig	GenBank Accession Number: BC016618	Purification Method: Protein A purification
Concentration: 1000 ug/ml	GeneID (NCBI): 3937	CloneNo.: 4H10B1
Source: Mouse	UNIPROT ID: Q13094	Recommended Dilutions: WB 1:5000-1:50000 IF/ICC 1:400-1:1600
Isotype: IgG1	Full Name: lymphocyte cytosolic protein 2 (SH2 domain containing leukocyte protein of 76kDa)	
Immunogen Catalog Number: AG3432	Calculated MW: 533 aa, 60 kDa	
	Observed MW: 76 kDa	

Applications

Tested Applications: WB, IF/ICC, FC (Intra), ELISA	Positive Controls: WB : Jurkat cells, K-562 cells, MOLT-4 cells
Species Specificity: human	IF/ICC : HeLa cells,
Cited Species: human	

Background Information

LCP2, also named as SLP76, is an adapter protein that acts as a substrate of the T cell antigen receptor (TCR)-activated protein tyrosine kinase pathway. It contains an N-terminal leucine Zip motif, a tyrosine-rich domain, a proline-rich domain and a C-terminal SH2 domain. It is constitutively associated with the growth factor receptor-bound protein 2 (Grb2)-related adapter protein 2 (Grap2, a.k.a. GADS) through the interaction of its proline residues with one of the SH3 domains of Grap2. SLP76 associates with growth factor receptor bound protein 2 (Grap2), and is thought to play a role TCR-mediated intracellular signal transduction. SLP76 is also expressed by mast cells, and mast cell activation was markedly impaired in SLP76-deficient mice.

Notable Publications

Author	Pubmed ID	Journal	Application
Jingjing Peng	39303515	Eur J Med Chem	

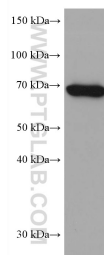
Storage

Storage:
Store at -20°C. Stable for one year after shipment.
Storage Buffer:
PBS with 0.02% sodium azide and 50% glycerol, pH7.3
Aliquoting is unnecessary for -20°C storage

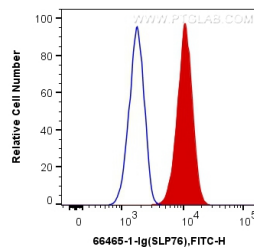
For technical support and original validation data for this product please contact:
T: 4006900926 E: Proteintech-CN@ptglab.com W: ptgcn.com

This product is exclusively available under Proteintech Group brand and is not available to purchase from any other manufacturer.

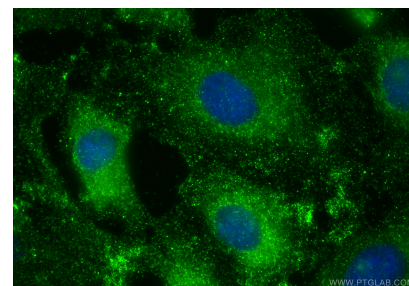
Selected Validation Data



Jurkat cells were subjected to SDS PAGE followed by western blot with 66465-1-Ig (SLP76 antibody) at dilution of 1:10000 incubated at room temperature for 1.5 hours.



1X10⁶ Jurkat cells were intracellularly stained with 0.4 ug Anti-Human SLP76 (66465-1-Ig, Clone:4H10B1) and CoraLite®488-Conjugated AffiniPure Goat Anti-Mouse IgG(H+L) at dilution 1:1000 (red), or 0.4 ug Control Antibody. Cells were fixed with 4% PFA and permeabilized with Flow Cytometry Perm Buffer (PF00011-C).



Immunofluorescent analysis of (-20°C Ethanol) fixed HeLa cells using SLP76 antibody (66465-1-Ig, Clone: 4H10B1) at dilution of 1:800 and CoraLite®488-Conjugated Goat Anti-Mouse IgG(H+L) (SA00013-1).