

For Research Use Only

# IKBKG Monoclonal antibody, PBS Only (Detector)

Catalog Number: 66460-2-PBS



## Basic Information

<b>Catalog Number:</b> 66460-2-PBS	<b>GenBank Accession Number:</b> BC012114	<b>Purification Method:</b> Protein G Magarose purification
<b>Source:</b> Mouse	<b>GeneID (NCBI):</b> 8517	<b>CloneNo.:</b> 1A1A2
<b>Isotype:</b> IgG1	<b>UNIPROT ID:</b> Q9Y6K9	
<b>Immunogen Catalog Number:</b> AG13358	<b>Full Name:</b> inhibitor of kappa light polypeptide gene enhancer in B-cells, kinase gamma	
	<b>Calculated MW:</b> 48 kDa	

## Applications

**Tested Applications:**  
Cytometric bead array, Indirect ELISA

**Species Specificity:**  
human

## Background Information

### Storage

**Storage:**  
Store at -80°C.  
**The product is shipped with ice packs. Upon receipt, store it immediately at -80°C**

**Storage Buffer:**  
PBS only, pH7.3

For technical support and original validation data for this product please contact:

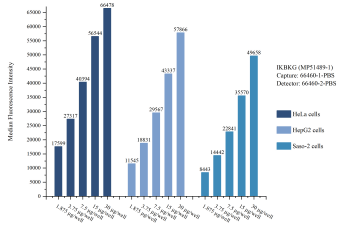
T: 4006900926

E: [Proteintech-CN@ptglab.com](mailto:Proteintech-CN@ptglab.com)

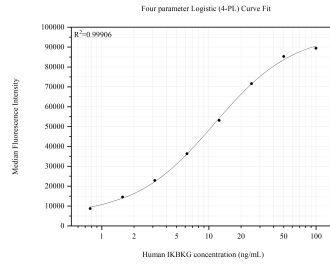
W: [ptgcn.com](http://ptgcn.com)

**This product is exclusively available under Proteintech Group brand and is not available to purchase from any other manufacturer.**

## Selected Validation Data



Cytometric bead array sample test of MP51489-1, IKKKG Monoclonal Matched Antibody Pair, PBS Only. Capture antibody: 66460-1-PBS. Detection antibody: 66460-2-PBS.



Cytometric bead array standard curve of MP51489-1, IKKKG Monoclonal Matched Antibody Pair, PBS Only. Capture antibody: 66460-1-PBS. Detection antibody: 66460-2-PBS. Standard: Ag13358. Range: 0.781-100 ng/mL