

For Research Use Only

IKBK G Monoclonal antibody

Catalog Number: 66460-1-Ig 1 Publications



Basic Information

Catalog Number: 66460-1-Ig	GenBank Accession Number: BC012114	Purification Method: Protein G purification
Concentration: 1400 ug/ml	GeneID (NCBI): 8517	CloneNo.: 1F2E2
Source: Mouse	UNIPROT ID: Q9Y6K9	Recommended Dilutions: WB: 1:1000-1:6000 IHC: 1:150-1:600 IF/ICC: 1:400-1:1600
Isotype: IgG1	Full Name: inhibitor of kappa light polypeptide gene enhancer in B-cells, kinase gamma	
Immunogen Catalog Number: AG13358	Calculated MW: 48 kDa Observed MW: 48 kDa	

Applications

Tested Applications: WB, IHC, IF/ICC, ELISA	Positive Controls: WB : HeLa cells, HEK-293 cells, Jurkat cells, K-562 cells IHC : human breast cancer tissue, IF/ICC : HeLa cells,
Cited Applications: WB	
Species Specificity: human	
Cited Species: human	
Note-IHC: suggested antigen retrieval with TE buffer pH 9.0; (*) Alternatively, antigen retrieval may be performed with citrate buffer pH 6.0	

Background Information

IKBK G, also named as FIP3, NEMO, IKKAP1 and IKK G, is specifically phosphorylate serine or threonine residues that are followed by a proline residue. IKBK G is regulatory subunit of the IKK core complex which phosphorylates inhibitors of NF-kappa-B thus leading to the dissociation of the inhibitor/NF-kappa-B complex and ultimately the degradation of the inhibitor. Its binding to scaffolding polyubiquitin seems to play a role in IKK activation by multiple signaling receptor pathways.

Notable Publications

Author	Pubmed ID	Journal	Application
Jinfu Sun	37714433	Virol Sin	WB

Storage

Storage:
Store at -20°C. Stable for one year after shipment.
Storage Buffer:
PBS with 0.02% sodium azide and 50% glycerol, pH7.3
Aliquoting is unnecessary for -20°C storage

For technical support and original validation data for this product please contact:

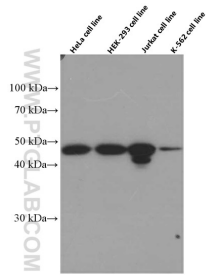
T: 4006900926

E: Proteintech-CN@ptglab.com

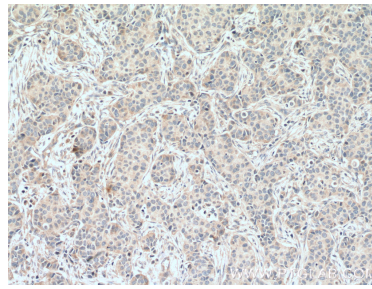
W: ptgcn.com

This product is exclusively available under Proteintech Group brand and is not available to purchase from any other manufacturer.

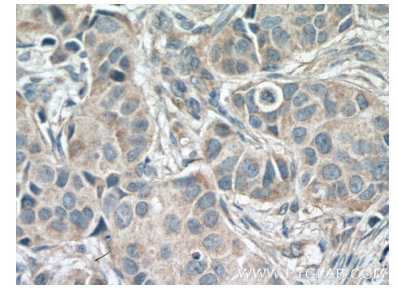
Selected Validation Data



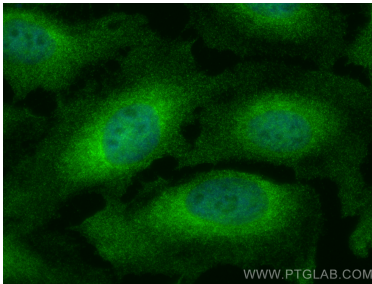
Various lysates were subjected to SDS PAGE followed by western blot with 66460-1-Ig (IKBKG antibody) at dilution of 1:3000 incubated at room temperature for 1.5 hours.



Immunohistochemical analysis of paraffin-embedded human breast cancer tissue slide using 66460-1-Ig (IKBKG antibody) at dilution of 1:300 (under 10x lens. Heat mediated antigen retrieval with Tris-EDTA buffer (pH 9.0).



Immunohistochemical analysis of paraffin-embedded human breast cancer tissue slide using 66460-1-Ig (IKBKG antibody) at dilution of 1:300 (under 40x lens. Heat mediated antigen retrieval with Tris-EDTA buffer (pH 9.0).



Immunofluorescent analysis of (4% PFA) fixed HeLa cells using IKBKG antibody (66460-1-Ig, Clone: 1F2E2) at dilution of 1:800 and CoraLite®488-Conjugated Goat Anti-Mouse IgG(H+L) (SA00013-1).