

For Research Use Only

# STAT5A Monoclonal antibody, PBS Only (Capture)

Catalog Number: 66459-1-PBS



## Basic Information

Catalog Number: 66459-1-PBS	GenBank Accession Number: BC027036	Purification Method: Protein A purification
Size: 1mg/ml	GeneID (NCBI): 6776	CloneNo.: 1F10F6
Source: Mouse	UNIPROT ID: P42229	
Isotype: IgG2a	Full Name: signal transducer and activator of transcription 5A	
Immunogen Catalog Number: AG19546	Calculated MW: 794 aa, 92 kDa	
	Observed MW: 95 kDa	

## Applications

**Tested Applications:**  
WB, IF/ICC, Indirect ELISA, Sample test

**Species Specificity:**  
human, mouse, rat, pig

## Background Information

STAT5A, also named as STAT5, belongs to the transcription factor STAT family. In response to cytokines and growth factors, STAT family members are phosphorylated by the receptor associated kinases, and then form homo- or heterodimers that translocate to the cell nucleus where they act as transcription activators. STAT5A is activated by, and mediates the responses of many cell ligands, such as IL2, IL3, IL7 GM-CSF, erythropoietin, thrombopoietin, and different GHs. Activation of STAT5A in myeloma and lymphoma associated with a TEL/JAK2 gene fusion is independent of cell stimulus and has been shown to be essential for the tumorigenesis. The mouse counterpart of human STAT5A is found to induce the expression of BCL2L1/BCL-X(L), which suggests the antiapoptotic function of STAT5A in cells.

## Storage

**Storage:**  
Store at -80°C.  
**The product is shipped with ice packs. Upon receipt, store it immediately at -80°C**

**Storage Buffer:**  
PBS Only

For technical support and original validation data for this product please contact:

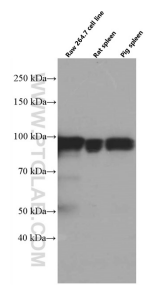
T: 4006900926

E: [Proteintech-CN@ptglab.com](mailto:Proteintech-CN@ptglab.com)

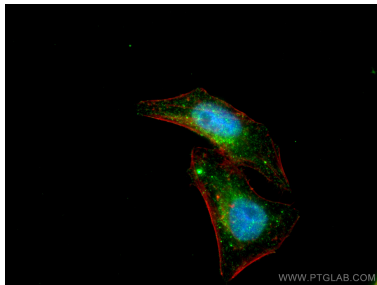
W: [ptgcn.com](http://ptgcn.com)

**This product is exclusively available under Proteintech Group brand and is not available to purchase from any other manufacturer.**

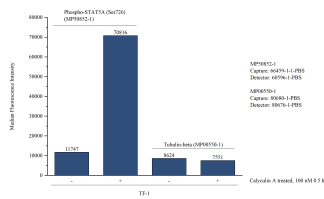
## Selected Validation Data



Various lysates were subjected to SDS PAGE followed by western blot with 66459-1-Ig (STAT5A antibody) at dilution of 1:8000 incubated at room temperature for 1.5 hours. This data was developed using the same antibody clone with 66459-1-PBS in a different storage buffer formulation.



Immunofluorescent analysis of (4% PFA) fixed HepG2 cells using STAT5A antibody (66459-1-Ig, Clone: 1F10F6) at dilution of 1:400 and CoraLite®488-Conjugated AffiniPure Goat Anti-Mouse IgG(H+L), CL594-Phalloidin (red). This data was developed using the same antibody clone with 66459-1-PBS in a different storage buffer formulation.



Cytometric bead array in cell lysate using MP50852-1, Phospho-STAT5A (Ser726) Monoclonal Matched Antibody Pair, PBS Only. Capture antibody: 66459-1-PBS. Detection antibody: 60596-1-PBS. Cell lysate: Non-treated TF-1 and Calyculin A treated TF-1 (30  $\mu$ g/well). Non-related target Tubulin-beta Recombinant Matched Antibody Pair (MP00550-1) was served as control.