

For Research Use Only

ZO-1 Monoclonal antibody

Catalog Number: 66452-1-Ig

Featured Product

80 Publications



Basic Information

Catalog Number:

66452-1-Ig

Concentration:

2000 ug/ml

Source:

Mouse

Isotype:

IgG1

Immunogen Catalog Number:

AG16454

GenBank Accession Number:

BC111712

GeneID (NCBI):

7082

UNIPROT ID:

Q07157

Full Name:

tight junction protein 1 (zona occludens 1)

Calculated MW:

1748 aa, 195 kDa

Observed MW:

230 kDa

Purification Method:

Protein G purification

CloneNo.:

1G4A1

Recommended Dilutions:

WB 1:1000-1:6000

IHC 1:200-1:800

IF-P 1:200-1:800

IF/ICC 1:400-1:1600

Applications

Tested Applications:

WB, IHC, IF/ICC, IF-P, ELISA

Cited Applications:

WB, IHC, IF

Species Specificity:

human, canine

Cited Species:

human, pig

Note-IHC: suggested antigen retrieval with TE buffer pH 9.0; (*) Alternatively, antigen retrieval may be performed with citrate buffer pH 6.0

Positive Controls:

WB : HUVEC cells, HeLa cells, COLO 320 cells, A431 cells, LNCaP cells, HEK-293 cells, HepG2 cells

IHC : human pancreas cancer tissue, human prostate cancer tissue

IF-P : human breast cancer tissue,

IF/ICC : MCF-7 cells, MDCK cells

Background Information

Tight junction (or zonula occludens) form the continuous intercellular barrier between epithelial and endothelial cells, which is required to separate tissue spaces and regulate selective movement of solutes across the epithelium and endothelium (PMID: 20066090). ZO-1 (also known as TJP1) is a peripheral membrane phosphoprotein located on the cytoplasmic face and is expressed in tight junctions of both epithelial and endothelial cells (PMID: 3528172). It binds the transmembrane proteins occludin and the claudins linking them to cytoskeletal actin (PMID: 17418867). ZO-1 belongs to a family of multidomain proteins known as the membrane-associated guanylate kinase homologs (MAGUKs). It is a pivotal tight junction protein and may be involved in signalling mechanisms regulating cell proliferation and differentiation (PMID: 22782886).

Notable Publications

Author	Pubmed ID	Journal	Application
Dayun Feng	36179025	Sci Adv	WB
Chengmei Huang	34583750	J Exp Clin Cancer Res	IF
Yingying Wang	36174863	Int J Biol Macromol	WB,IF

Storage

Storage:

Store at -20°C. Stable for one year after shipment.

Storage Buffer:

PBS with 0.02% sodium azide and 50% glycerol, pH7.3

Aliquoting is unnecessary for -20°C storage

For technical support and original validation data for this product please contact:

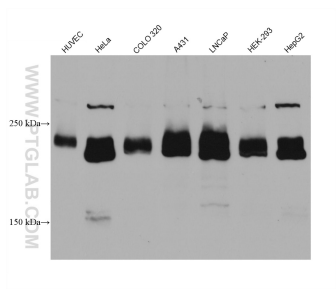
T: 4006900926

E: Proteintech-CN@ptglab.com

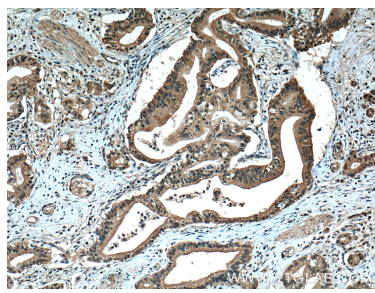
W: ptgcn.com

This product is exclusively available under Proteintech Group brand and is not available to purchase from any other manufacturer.

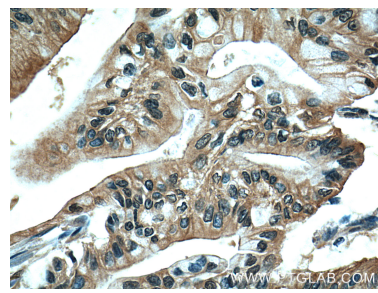
Selected Validation Data



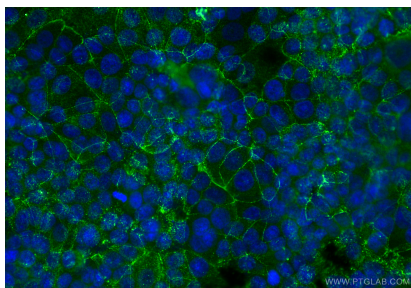
Various lysates were subjected to SDS PAGE followed by western blot with 66452-1-Ig (ZO-1 antibody) at dilution of 1:3000 incubated at room temperature for 1.5 hours.



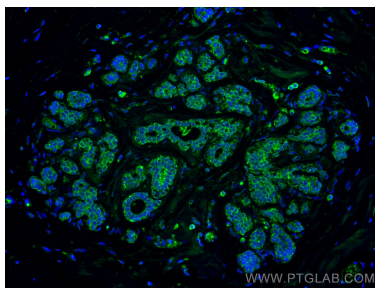
Immunohistochemical analysis of paraffin-embedded human pancreas cancer tissue slide using 66452-1-Ig (ZO-1 antibody) at dilution of 1:400 (under 10x lens. Heat mediated antigen retrieval with Tris-EDTA buffer (pH 9.0).



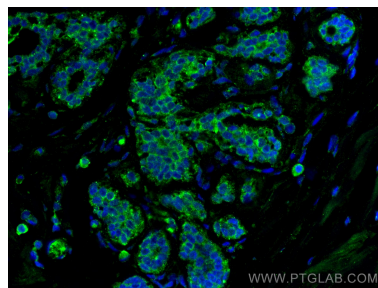
Immunohistochemical analysis of paraffin-embedded human pancreas cancer tissue slide using 66452-1-Ig (ZO-1 antibody) at dilution of 1:400 (under 40x lens. Heat mediated antigen retrieval with Tris-EDTA buffer (pH 9.0).



Immunofluorescent analysis of (-20°C Methanol) fixed MCF-7 cells using ZO-1 antibody (66452-1-Ig, Clone: 1G4A1) at dilution of 1:800 and CoraLite®488-Conjugated Goat Anti-Mouse IgG(H+L) (SA00013-1).



Immunofluorescent analysis of (4% PFA) fixed human breast cancer tissue using ZO-1 antibody (66452-1-Ig, Clone: 1G4A1) at dilution of 1:400 and CoraLite®488-Conjugated AffiniPure Goat Anti-Mouse IgG(H+L).



Immunofluorescent analysis of (4% PFA) fixed human breast cancer tissue using ZO-1 antibody (66452-1-Ig, Clone: 1G4A1) at dilution of 1:400 and CoraLite®488-Conjugated AffiniPure Goat Anti-Mouse IgG(H+L).