

For Research Use Only

# 4-1BBL/TNFSF9 Monoclonal antibody, PBS Only (Capture)

Catalog Number: 66450-1-PBS

Featured Product



## Basic Information

Catalog Number:

66450-1-PBS

Concentration:

1000 µg/ml

Source:

Mouse

Isotype:

IgG1

Immunogen Catalog Number:

AG12768

GenBank Accession Number:

BC104805

GeneID (NCBI):

8744

UNIPROT ID:

P41273

Full Name:

tumor necrosis factor (ligand)  
superfamily, member 9

Calculated MW:

254 aa, 27 kDa

Observed MW:

27 kDa

Purification Method:

Protein G purification

CloneNo.:

1B4B1

## Applications

Tested Applications:

WB, Sandwich ELISA, Indirect ELISA

Species Specificity:

human

## Background Information

TNFSF9, also named as 4-1BBL, belongs to the tumor necrosis factor family. It is a cytokine that binds to TNFRSF9. TNFSF9 induces the proliferation of activated peripheral blood T-cells. It may have a role in activation-induced cell death (AICD) and may play a role in cognate interactions between T-cells and B-cells/macrophages.

## Storage

Storage:

Store at -80°C.

The product is shipped with ice packs. Upon receipt, store it immediately at -80°C

Storage Buffer:

100% PBS pH 7.3

For technical support and original validation data for this product please contact:

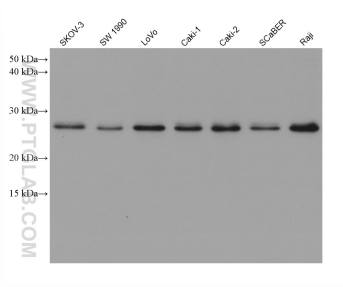
T: 4006900926

E: [Proteintech-CN@ptglab.com](mailto:Proteintech-CN@ptglab.com)

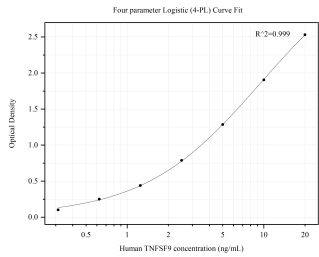
W: [ptgcn.com](http://ptgcn.com)

This product is exclusively available under Proteintech Group brand and is not available to purchase from any other manufacturer.

## Selected Validation Data



Various lysates were subjected to SDS PAGE followed by western blot with 66450-1-Ig (4-1BBL/TNFSF9 antibody) at dilution of 1:10000 incubated at room temperature for 1.5 hours. This data was developed using the same antibody clone with 66450-1-PBS in a different storage buffer formulation.



Sandwich ELISA standard curve of MP50011-1, 4-1BBL/TNFSF9 Monoclonal Matched Antibody Pair, PBS Only. Capture antibody: 66450-1-PBS. Detection antibody: HRP-conjugated 66450-2-PBS. Standard: Ag12768. Range: 0.313-20 ng/mL.