

For Research Use Only

CBX3 Monoclonal antibody

Catalog Number: 66446-1-Ig **2 Publications**



Basic Information

Catalog Number:

66446-1-Ig

Size:

1400 µg/ml

Source:

Mouse

Isotype:

IgG2a

Immunogen Catalog Number:

AG19112

GenBank Accession Number:

BC000954

GeneID (NCBI):

11335

UNIPROT ID:

Q13185

Full Name:

chromobox homolog 3 (HP1 gamma homolog, Drosophila)

Calculated MW:

21 kDa

Observed MW:

22 kDa

Purification Method:

Protein A purification

CloneNo.:

1A5A3

Recommended Dilutions:

WB 1:2000-1:20000

IF/ICC 1:400-1:1600

Applications

Tested Applications:

WB, IF/ICC, ELISA

Cited Applications:

WB

Species Specificity:

human, mouse

Cited Species:

human

Positive Controls:

WB : NIH/3T3 cells, HEK-293 cells, HeLa cells, Jurkat cells, RAW 264.7 cells

IF/ICC : HepG2 cells,

Background Information

The family of Heterochromatin protein 1 (HP1) proteins is a family of highly conserved heterochromatin-associated non-histone chromosomal proteins, which has important functions in nucleus. These functions include gene activation or repression, regulation of binding of cohesion complexes to centromere, sequestration of genes to nuclear periphery, and heterochromatin formation and propagation. Much evidence shows that HP1 proteins interact with numerous proteins including methylated histones, histone methyltransferases and so on. CBX3 is one of the paralogues of HP1 proteins

Notable Publications

Author	Pubmed ID	Journal	Application
Dan Wang	35659568	Int J Biochem Cell Biol	WB
Min Xie	39601498	Adv Biol (Weinh)	WB

Storage

Storage:

Store at -20°C. Stable for one year after shipment.

Storage Buffer:

PBS with 0.02% sodium azide and 50% glycerol pH 7.3.

Aliquoting is unnecessary for -20°C storage

For technical support and original validation data for this product please contact:

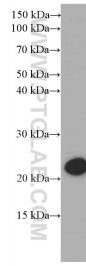
T: 4006900926

E: Proteintech-CN@ptglab.com

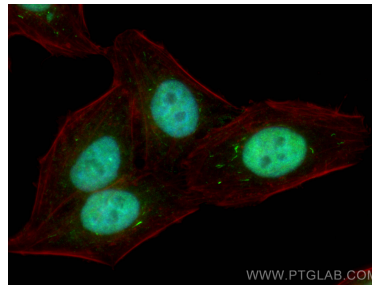
W: ptgcn.com

This product is exclusively available under Proteintech Group brand and is not available to purchase from any other manufacturer.

Selected Validation Data



NIH/3T3 cells were subjected to SDS PAGE followed by western blot with 66446-1-Ig (CBX3 Antibody) at dilution of 1:5000 incubated at room temperature for 1.5 hours.



Immunofluorescent analysis of (4% PFA) fixed HepG2 cells using CBX3 antibody (66446-1-Ig, Clone: 1A5A3) at dilution of 1:800 and CoraLite®488-Conjugated Goat Anti-Mouse IgG(H+L), CL594-Phalloidin (red).