

For Research Use Only

PDI Monoclonal antibody

Catalog Number: 66422-1-Ig

Featured Product

17 Publications



Basic Information

Catalog Number:

66422-1-Ig

Concentration:

1600 ug/ml

Source:

Mouse

Isotype:

IgG2b

Immunogen Catalog Number:

AG1747

GenBank Accession Number:

BC014504

GeneID (NCBI):

5034

UNIPROT ID:

P07237

Full Name:

prolyl 4-hydroxylase, beta polypeptide

Calculated MW:

57 kDa

Observed MW:

57 kDa

Purification Method:

Protein A purification

CloneNo.:

2E6A11

Recommended Dilutions:

WB 1:10000-1:100000

IHC 1:100-1:400

IF/ICC 1:200-1:800

Applications

Tested Applications:

WB, IHC, IF/ICC, ELISA

Cited Applications:

WB, IF

Species Specificity:

human, mouse, rat, pig

Cited Species:

human, mouse, bovine

Note-IHC: suggested antigen retrieval with TE buffer pH 9.0; (*) Alternatively, antigen retrieval may be performed with citrate buffer pH 6.0

Positive Controls:

WB : HEK-293 cells, rat brain tissue, HepG2 cells, L02 cells, COLO 320 cells

IHC : human liver tissue, human small intestine tissue

IF/ICC : HepG2 cells,

Background Information

PDIA1(Protein disulfide-isomerase) is also named as ERBA2L, PDI, P4HB, PO4DB. It is a multifunctional protein that catalyzes the formation, breakage and rearrangement of disulfide bonds. In some cell types, it seems to be secreted or associated with the plasma membrane, where it undergoes constant shedding and replacement from intracellular sources. It can exist as homodimer and monomers and homotetramers may also occur(PMID:12095988).

Notable Publications

Author	Pubmed ID	Journal	Application
Janine McCaughey	34350936	J Cell Sci	IF
Tianmiao Huang	34743989	Biochim Biophys Acta Gen Subj	IF
Xiaofan Jia	34672633	Mol Pharm	WB

Storage

Storage:

Store at -20°C. Stable for one year after shipment.

Storage Buffer:

PBS with 0.02% sodium azide and 50% glycerol pH 7.3.

Aliquoting is unnecessary for -20°C storage

For technical support and original validation data for this product please contact:

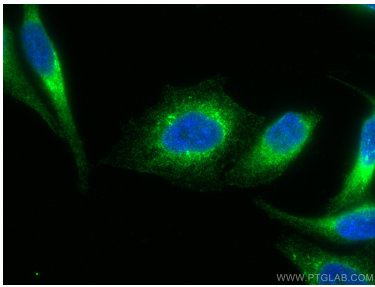
T: 4006900926

E: Proteintech-CN@ptglab.com

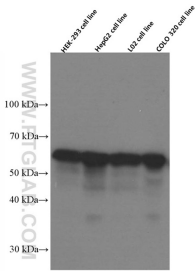
W: ptgcn.com

This product is exclusively available under Proteintech Group brand and is not available to purchase from any other manufacturer.

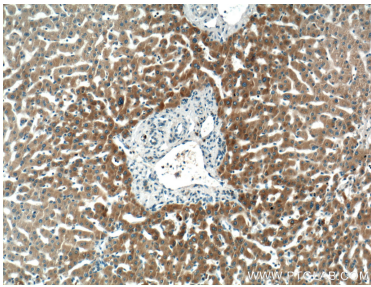
Selected Validation Data



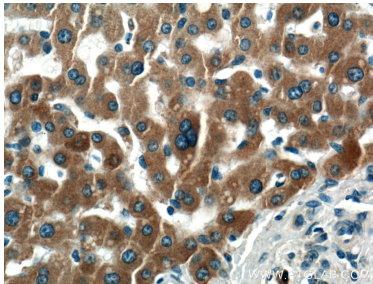
Immunofluorescent analysis of (4% PFA) fixed HepG2 cells using PDI antibody (66422-1-Ig, Clone: 2E6A11) at dilution of 1:400 and CoraLite®488-Conjugated AffiniPure Goat Anti-Mouse IgG(H+L).



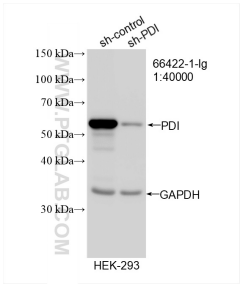
HEK-293 cells were subjected to SDS PAGE followed by western blot with 66422-1-Ig (PDI Antibody) at dilution of 1:50000 incubated at room temperature for 1.5 hours.



Immunohistochemical analysis of paraffin-embedded human liver tissue slide using 66422-1-Ig (PDI Antibody) at dilution of 1:200 (under 10x lens).



Immunohistochemical analysis of paraffin-embedded human liver tissue slide using 66422-1-Ig (PDI Antibody) at dilution of 1:200 (under 40x lens).



WB result of PDI antibody (66422-1-Ig; 1:40000; incubated at room temperature for 1.5 hours) with sh-Control and sh-PDI transfected HEK-293 cells.