

For Research Use Only

# Calsequestrin 2 Monoclonal antibody, PBS Only



Catalog Number: 66419-1-PBS

## Basic Information

Catalog Number: 66419-1-PBS	GenBank Accession Number: BC022288	Purification Method: Protein A purification
Size: 1 mg/ml	GeneID (NCBI): 845	CloneNo.: 1C10A1
Source: Mouse	UNIPROT ID: O14958	
Isotype: IgG2a	Full Name: calsequestrin 2 (cardiac muscle)	
Immunogen Catalog Number: AG13246	Calculated MW: 46 kDa	
	Observed MW: 50 kDa	

## Applications

Tested Applications:  
WB, Indirect ELISA, IHC, IF

Species Specificity:  
human, rat, pig, mouse

## Background Information

Calsequestrin (CASQ) is a  $\text{Ca}^{2+}$ -binding protein present primarily in junctional sarcoplasmic reticulum of skeletal and cardiac muscle; the cardiac form (CASQ2) is encoded by a separate gene. The primary role of CASQ2 is buffering of the sarcoplasmic reticulum  $\text{Ca}^{2+}$  ions, but another role for CASQ2 has emerged recently: CASQ2 regulates the open probability of ryanodine receptor 2 (RyR2). Mutations in CASQ2 cause stress-induced polymorphic ventricular tachycardia, also referred to as catecholaminergic polymorphic ventricular tachycardia 2 (CPVT2), a disease characterized by bidirectional ventricular tachycardia that may lead to cardiac arrest.

## Storage

Storage:  
Store at  $-80^{\circ}\text{C}$ .  
**The product is shipped with ice packs. Upon receipt, store it immediately at  $-80^{\circ}\text{C}$**

Storage Buffer:  
PBS Only

For technical support and original validation data for this product please contact:

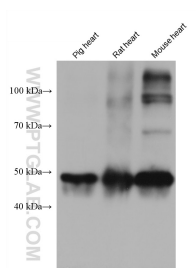
T: 4006900926

E: [Proteintech-CN@ptglab.com](mailto:Proteintech-CN@ptglab.com)

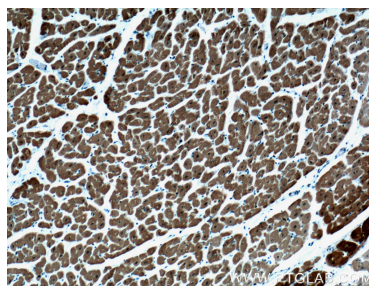
W: [ptgcn.com](http://ptgcn.com)

**This product is exclusively available under Proteintech Group brand and is not available to purchase from any other manufacturer.**

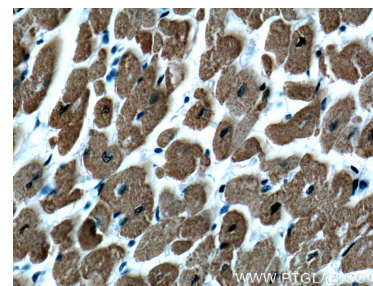
## Selected Validation Data



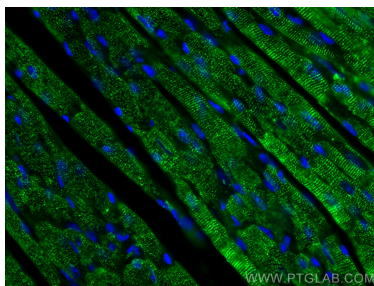
Various lysates were subjected to SDS PAGE followed by western blot with 66419-1-Ig (Calsequestrin 2 antibody) at dilution of 1:30000 incubated at room temperature for 1.5 hours. This data was developed using the same antibody clone with 66419-1-PBS in a different storage buffer formulation.



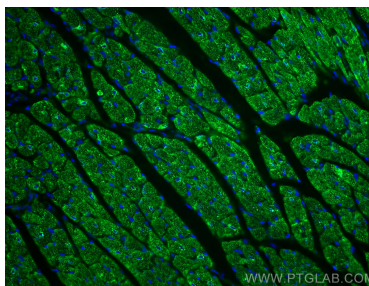
Immunohistochemical analysis of paraffin-embedded human heart tissue slide using 66419-1-Ig (Calsequestrin 2 antibody at dilution of 1:400 (under 10x lens). This data was developed using the same antibody clone with 66419-1-PBS in a different storage buffer formulation.



Immunohistochemical analysis of paraffin-embedded human heart tissue slide using 66419-1-Ig (Calsequestrin 2 antibody at dilution of 1:400 (under 40x lens). This data was developed using the same antibody clone with 66419-1-PBS in a different storage buffer formulation.



Immunofluorescent analysis of (4% PFA) fixed mouse heart tissue using Calsequestrin 2 antibody (66419-1-Ig, Clone: 1C10A1) at dilution of 1:400 and CoraLite®488-Conjugated AffiniPure Goat Anti-Mouse IgG(H+L). This data was developed using the same antibody clone with 66419-1-PBS in a different storage buffer formulation.



Immunofluorescent analysis of (4% PFA) fixed mouse heart tissue using Calsequestrin 2 antibody (66419-1-Ig, Clone: 1C10A1) at dilution of 1:400 and CoraLite®488-Conjugated AffiniPure Goat Anti-Mouse IgG(H+L). This data was developed using the same antibody clone with 66419-1-PBS in a different storage buffer formulation.