

Calsequestrin 2 Monoclonal antibody

Catalog Number: 66419-1-Ig

1 Publications

Basic Information

Catalog Number:

66419-1-Ig

Size:

1500 µg/ml

Source:

Mouse

Isotype:

IgG2a

Immunogen Catalog Number:

AG13246

GenBank Accession Number:

BC022288

GeneID (NCBI):

845

UNIPROT ID:

O14958

Full Name:

calsequestrin 2 (cardiac muscle)

Calculated MW:

46 kDa

Observed MW:

50 kDa

Purification Method:

Protein A purification

CloneNo.:

1C10A1

Recommended Dilutions:

WB 1:5000-1:50000

IHC 1:50-1:500

IF-P 1:200-1:800

Applications

Tested Applications:

IF-P, IHC, WB, ELISA

Cited Applications:

IHC

Species Specificity:

human, rat, pig, mouse

Cited Species:

human

Note-IHC: suggested antigen retrieval with TE buffer pH 9.0; (*) Alternatively, antigen retrieval may be performed with citrate buffer pH 6.0

Positive Controls:

WB : pig heart tissue, human skeletal muscle tissue, rat skeletal muscle tissue, mouse skeletal muscle tissue, human heart tissue, pig skeletal muscle tissue, rat heart tissue, mouse heart tissue

IHC : human heart tissue,

IF-P : mouse heart tissue,

Background Information

Calsequestrin (CASQ) is a Ca²⁺-binding protein present primarily in junctional sarcoplasmic reticulum of skeletal and cardiac muscle; the cardiac form (CASQ2) is encoded by a separate gene. The primary role of CASQ2 is buffering of the sarcoplasmic reticulum Ca²⁺ ions, but another role for CASQ2 has emerged recently: CASQ2 regulates the open probability of ryanodine receptor 2 (RyR2). Mutations in CASQ2 cause stress-induced polymorphic ventricular tachycardia, also referred to as catecholaminergic polymorphic ventricular tachycardia 2 (CPVT2), a disease characterized by bidirectional ventricular tachycardia that may lead to cardiac arrest.

Notable Publications

Author	Pubmed ID	Journal	Application
Takamura Nagasaka	33184660	J Neuropathol Exp Neurol	IHC

Storage

Storage:

Store at -20°C. Stable for one year after shipment.

Storage Buffer:

PBS with 0.02% sodium azide and 50% glycerol pH 7.3.

Aliquoting is unnecessary for -20°C storage

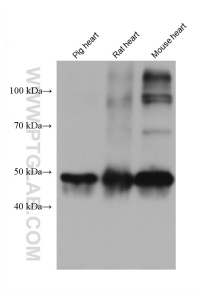
For technical support and original validation data for this product please contact:

T: 4006900926

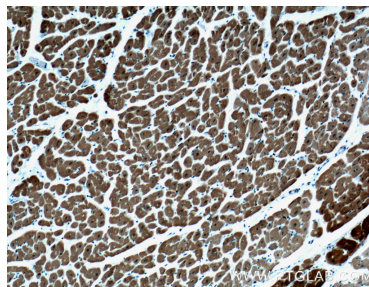
E: Proteintech-CN@ptglab.comW: ptgcn.com

This product is exclusively available under Proteintech Group brand and is not available to purchase from any other manufacturer.

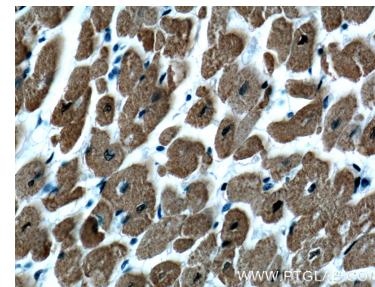
Selected Validation Data



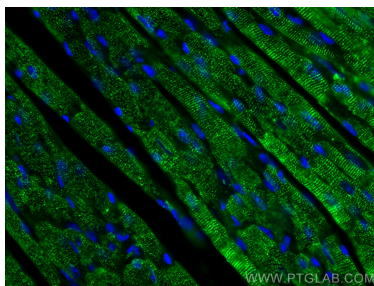
Various lysates were subjected to SDS PAGE followed by western blot with 66419-1-Ig (Calsequestrin 2 antibody) at dilution of 1:30000 incubated at room temperature for 1.5 hours.



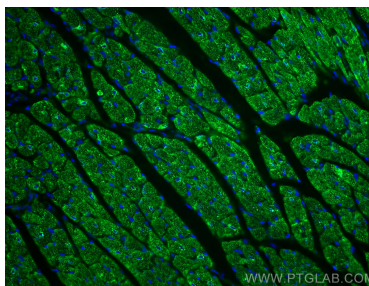
Immunohistochemical analysis of paraffin-embedded human heart tissue slide using 66419-1-Ig (Calsequestrin 2 antibody at dilution of 1:400 (under 10x lens).



Immunohistochemical analysis of paraffin-embedded human heart tissue slide using 66419-1-Ig (Calsequestrin 2 antibody at dilution of 1:400 (under 40x lens).



Immunofluorescent analysis of (4% PFA) fixed mouse heart tissue using Calsequestrin 2 antibody (66419-1-Ig, Clone: 1C10A1) at dilution of 1:400 and CoraLite®488-Conjugated AffiniPure Goat Anti-Mouse IgG(H+L).



Immunofluorescent analysis of (4% PFA) fixed mouse heart tissue using Calsequestrin 2 antibody (66419-1-Ig, Clone: 1C10A1) at dilution of 1:400 and CoraLite®488-Conjugated AffiniPure Goat Anti-Mouse IgG(H+L).