

For Research Use Only

IκB Alpha Monoclonal antibody, PBS Only (Capture)

Catalog Number: 66418-1-PBS

Featured Product



Basic Information

Catalog Number:

66418-1-PBS

Size:

1mg/ml

Source:

Mouse

Isotype:

IgG1

Immunogen Catalog Number:

AG22040

GenBank Accession Number:

BC004983

GeneID (NCBI):

4792

UNIPROT ID:

P25963

Full Name:

nuclear factor of kappa light

polypeptide gene enhancer in B-cells

inhibitor, alpha

Calculated MW:

36 kDa

Observed MW:

36 kDa

Purification Method:

Protein G purification

CloneNo.:

2G6H7

Applications

Tested Applications:

WB, IHC, Cytometric bead array, Indirect ELISA

Species Specificity:

human, mouse, rat

Background Information

Nuclear factor of kappa light polypeptide gene enhancer in B-cells inhibitor, alpha (NFKB1A, synonyms: IKBA, MAD-3, NFKB1). NFKB1 or NFKB2 is bound to REL, RELA, or RELB to form the NFKB complex. The NFKB complex is inhibited by I-kappa-B proteins (NFKBIA or NFKBIB), which inactivate NF-kappa-B by trapping it in the cytoplasm. Phosphorylation of serine residues on the I-kappa-B proteins by kinases (IKBKA, or IKBKB) marks them for destruction via the ubiquitination pathway, thereby allowing activation of the NF-kappa-B complex. Activated NFKB complex translocates into the nucleus and binds DNA at kappa-B-binding motifs such as 5-prime GGGRNNYYCC 3-prime or 5-prime HGGARNYYCC 3-prime.

Storage

Storage:

Store at -80°C.

The product is shipped with ice packs. Upon receipt, store it immediately at -80°C

Storage Buffer:

PBS Only

For technical support and original validation data for this product please contact:

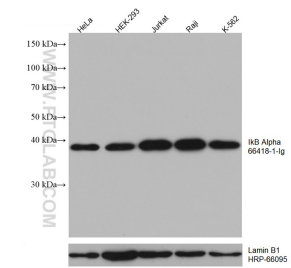
T: 4006900926

E: Proteintech-CN@ptglab.com

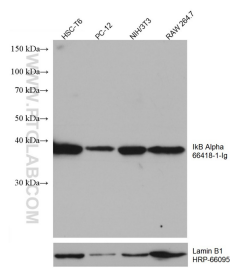
W: ptgcn.com

This product is exclusively available under Proteintech Group brand and is not available to purchase from any other manufacturer.

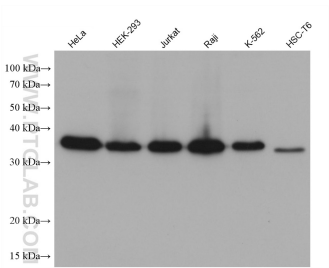
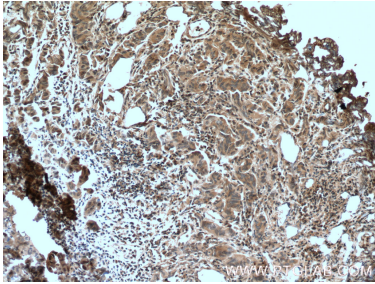
Selected Validation Data



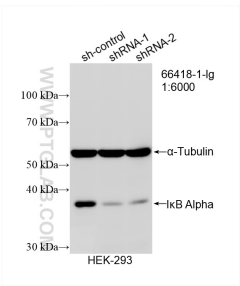
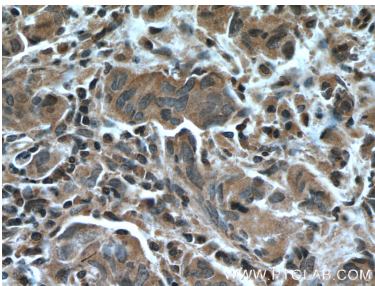
Various lysates were subjected to SDS PAGE followed by western blot with 66418-1-Ig (IkB alpha antibody) at dilution of 1:10000 incubated at room temperature for 1.5 hours. The membrane was stripped and reblotted with HRP-conjugated Lamin B1 Monoclonal antibody (HRP-66095) as loading control. This data was developed using the same antibody clone with 66418-1-PBS in a different storage buffer formulation.



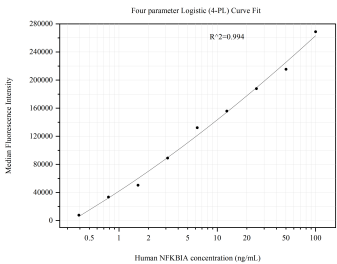
Various lysates were subjected to SDS PAGE followed by western blot with 66418-1-Ig (IkB alpha antibody) at dilution of 1:10000 incubated at room temperature for 1.5 hours. The membrane was stripped and reblotted with HRP-conjugated Lamin B1 Monoclonal antibody (HRP-66095) as loading control. This data was developed using the same antibody clone with 66418-1-PBS in a different storage buffer formulation.



Various lysates were subjected to SDS PAGE followed by western blot with 66418-1-Ig (IkB Alpha antibody) at dilution of 1:10000 incubated at room temperature for 1.5 hours. This data was developed using the same antibody clone with 66418-1-PBS in a different storage buffer formulation.



WB result of IkB Alpha antibody (66418-1-Ig; 1:6000; incubated at room temperature for 1.5 hours) with sh-Control and sh-IkB Alpha transfected HEK-293 cells. This data was developed using the same antibody clone with 66418-1-PBS in a different storage buffer formulation.



Cytometric bead array standard curve of MP51027-2, NFKBIA Monoclonal Matched Antibody Pair, PBS Only. Capture antibody: 66418-1-PBS. Detection antibody: 60712-1-PBS. Standard: Ag0345. Range: 0.391-100 ng/mL.