

P2RX4 Monoclonal antibody, PBS Only

Catalog Number: 66416-1-PBS

Basic Information

Catalog Number: 66416-1-PBS	GenBank Accession Number: BC033826	Purification Method: Protein A purification
Size: 1 mg/ml	GeneID (NCBI): 5025	CloneNo.: 1A5A6
Source: Mouse	UNIPROT ID: Q99571	
Isotype: IgG2b	Full Name: purinergic receptor P2X, ligand-gated ion channel, 4	
Immunogen Catalog Number: AG4445	Calculated MW: 388 aa, 43 kDa	
	Observed MW: 50 kDa	

Applications

Tested Applications:
WB, IHC, Indirect ELISA

Species Specificity:
human, mouse, pig, rat

Background Information

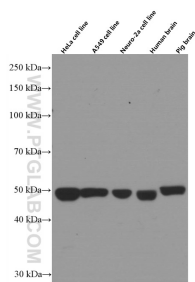
Nucleotides, the structural subunits of the nucleic acids, are also important extracellular signaling molecules. P2 receptors are a family of cell surface receptors that mediate a wide variety of physiologic effects in response to extracellular nucleotides. These receptors fall into two classes: P2X receptors, which are ligand-gated ion channels that mediate calcium and potassium fluxes in response to ATP, and P2Y receptors, which are G protein-coupled receptors (GPCRs). P2RX4 (P2X purinoceptor 4) is a receptor for ATP acting as a ligand gated ion channel. The calculated molecular weight of P2RX4 is 43 kDa, larger apparent molecular weights of 50-80 kDa have been reported, possibly due to post-translational glycosylation (PMID: 24040145, 15262999; 29382907; 12566439).

Storage

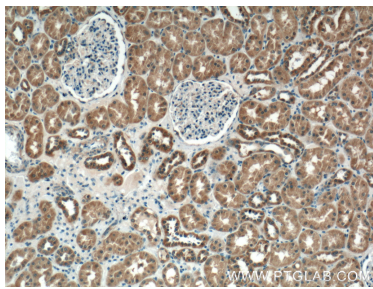
Storage:
Store at -80°C.
The product is shipped with ice packs. Upon receipt, store it immediately at -80°C

Storage Buffer:
PBS Only

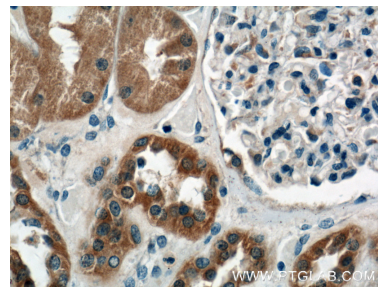
Selected Validation Data



Various lysates were subjected to SDS PAGE followed by western blot with 66416-1-Ig (P2RX4 Antibody) at dilution of 1:4000 incubated at room temperature for 1.5 hours. This data was developed using the same antibody clone with 66416-1-PBS in a different storage buffer formulation.



Immunohistochemical analysis of paraffin-embedded human kidney tissue slide using 66416-1-Ig (P2RX4 Antibody) at dilution of 1:400 (under 10x lens). This data was developed using the same antibody clone with 66416-1-PBS in a different storage buffer formulation.



Immunohistochemical analysis of paraffin-embedded human kidney tissue slide using 66416-1-Ig (P2RX4 Antibody) at dilution of 1:400 (under 40x lens). This data was developed using the same antibody clone with 66416-1-PBS in a different storage buffer formulation.