

For Research Use Only

# Mesothelin Monoclonal antibody, PBS Only

Catalog Number: 66404-1-PBS



## Basic Information

Catalog Number:

66404-1-PBS

Size:

1mg/ml

Source:

Mouse

Isotype:

IgG1

Immunogen Catalog Number:

AG23606

GenBank Accession Number:

BC003512

GeneID (NCBI):

10232

UNIPROT ID:

Q13421

Full Name:

mesothelin

Calculated MW:

69 kDa

Observed MW:

69 kDa, 40 kDa

Purification Method:

Protein G purification

CloneNo.:

2E3A4

## Applications

Tested Applications:

WB, IHC, Indirect ELISA

Species Specificity:

human

## Background Information

Mesothelin (MSLN) is a 40kDa GPI-anchored surface glycoprotein that is expressed on pleural and peritoneal mesothelial cells, but not in other non-neoplastic tissues. The mesothelin gene encodes a 69-71kDa precursor protein that is processed to a 40kDa membrane-bound protein termed mesothelin and a 31kDa shed fragment called megakaryocyte-potentiating factor (MPF) that is released from the cell. Mesothelin is a tumor differentiation antigen present at low levels on a restricted set of normal adult tissues (e.g. mesothelium), and is expressed at high levels in mesotheliomas, as well as ovarian, pancreatic, and lung cancers. Mesothelin may be a new target for immunotherapy (PMID: 20922056, 18691948, 15217923).

## Storage

Storage:

Store at -80°C.

The product is shipped with ice packs. Upon receipt, store it immediately at -80°C

Storage Buffer:

PBS Only

For technical support and original validation data for this product please contact:

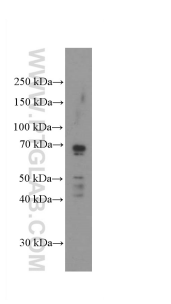
T: 4006900926

E: [Proteintech-CN@ptglab.com](mailto:Proteintech-CN@ptglab.com)

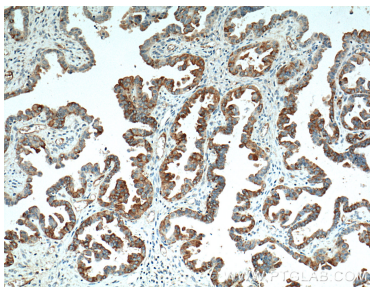
W: [ptgcn.com](http://ptgcn.com)

This product is exclusively available under Proteintech Group brand and is not available to purchase from any other manufacturer.

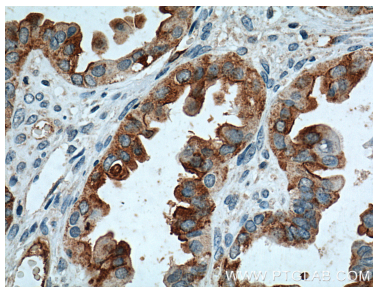
Selected Validation Data



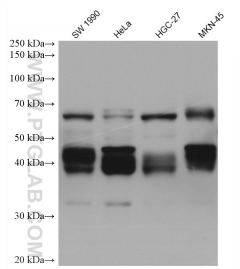
HeLa cells were subjected to SDS PAGE followed by western blot with 66404-1-Ig (Mesothelin antibody) at dilution of 1:1000 incubated at room temperature for 1.5 hours. This data was developed using the same antibody clone with 66404-1-PBS in a different storage buffer formulation.



Immunohistochemical analysis of paraffin-embedded human ovary tumor tissue slide using 66404-1-Ig (Mesothelin antibody) at dilution of 1:200 (under 10x lens. Heat mediated antigen retrieval with Tris-EDTA buffer (pH 9.0). This data was developed using the same antibody clone with 66404-1-PBS in a different storage buffer formulation.



Immunohistochemical analysis of paraffin-embedded human ovary tumor tissue slide using 66404-1-Ig (Mesothelin antibody) at dilution of 1:200 (under 40x lens. Heat mediated antigen retrieval with Tris-EDTA buffer (pH 9.0). This data was developed using the same antibody clone with 66404-1-PBS in a different storage buffer formulation.



Various lysates were subjected to SDS PAGE followed by western blot with 66404-1-Ig (Mesothelin antibody) at dilution of 1:5000 incubated at room temperature for 1.5 hours. This data was developed using the same antibody clone with 66404-1-PBS in a different storage buffer formulation.