

For Research Use Only

# PLA2G1B Monoclonal antibody, PBS Only



Catalog Number: 66397-1-PBS

## Basic Information

Catalog Number:

66397-1-PBS

Size:

1mg/ml

Source:

Mouse

Isotype:

IgG2a

Immunogen Catalog Number:

AG8812

GenBank Accession Number:

BC005386

GeneID (NCBI):

5319

UNIPROT ID:

P04054

Full Name:

phospholipase A2, group IB (pancreas)

Calculated MW:

70aa, 8 kDa; 148aa, 16 kDa

Observed MW:

13-16 kDa

Purification Method:

Protein A purification

CloneNo.:

1F2C10

## Applications

Tested Applications:

WB, IHC, Indirect ELISA

Species Specificity:

human, pig

## Background Information

### Storage

Storage:

Store at -80°C.

The product is shipped with ice packs. Upon receipt, store it immediately at -80°C

Storage Buffer:

PBS Only

For technical support and original validation data for this product please contact:

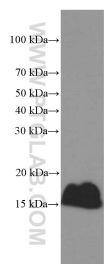
T: 4006900926

E: [Proteintech-CN@ptglab.com](mailto:Proteintech-CN@ptglab.com)

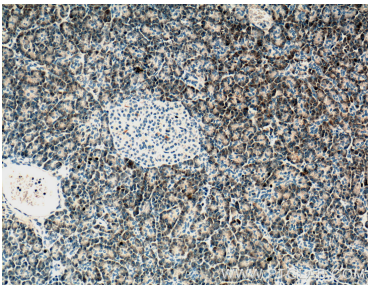
W: [ptgcn.com](http://ptgcn.com)

This product is exclusively available under Proteintech Group brand and is not available to purchase from any other manufacturer.

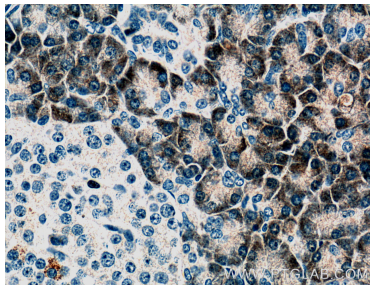
## Selected Validation Data



pig pancreas tissue were subjected to SDS PAGE followed by western blot with 66397-1-Ig (PLA2G1B Antibody) at dilution of 1:3000 incubated at room temperature for 1.5 hours. This data was developed using the same antibody clone with 66397-1-PBS in a different storage buffer formulation.



Immunohistochemical analysis of paraffin-embedded human pancreas tissue slide using 66397-1-Ig (PLA2G1B antibody) at dilution of 1:200 (under 10x lens). This data was developed using the same antibody clone with 66397-1-PBS in a different storage buffer formulation.



Immunohistochemical analysis of paraffin-embedded human pancreas tissue slide using 66397-1-Ig (PLA2G1B antibody) at dilution of 1:200 (under 40x lens). This data was developed using the same antibody clone with 66397-1-PBS in a different storage buffer formulation.