

PLA2G1B Monoclonal antibody

Catalog Number: 66397-1-Ig

Basic Information

Catalog Number: 66397-1-Ig	GenBank Accession Number: BC005386	Purification Method: Protein A purification
Size: 1700 µg/ml	GeneID (NCBI): 5319	CloneNo.: 1F2C10
Source: Mouse	UNIPROT ID: P04054	Recommended Dilutions: WB 1:1000-1:6000 IHC 1:100-1:400
Isotype: IgG2a	Full Name: phospholipase A2, group IB (pancreas)	
Immunogen Catalog Number: AG8812	Calculated MW: 70aa, 8 kDa; 148aa, 16 kDa	
	Observed MW: 13-16 kDa	

Applications

Tested Applications: WB, IHC, ELISA	Positive Controls:
Species Specificity: human, pig	WB : pig pancreas tissue, IHC : human pancreas tissue,
Note-IHC: suggested antigen retrieval with TE buffer pH 9.0; (*) Alternatively, antigen retrieval may be performed with citrate buffer pH 6.0	

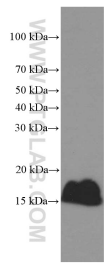
Background Information

PLA2G1B is a secreted member of the phospholipase A2 (PLA2) class of enzymes, which is produced by the pancreatic acinar cells. PLA2G1B catalyzes the hydrolysis of the sn-2 position of membrane glycerophospholipids to release arachidonic acid (AA) and lysophospholipids.

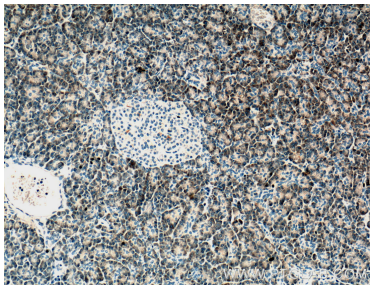
Storage

Storage:
Store at -20°C. Stable for one year after shipment.
Storage Buffer:
PBS with 0.02% sodium azide and 50% glycerol pH 7.3.
Aliquoting is unnecessary for -20°C storage

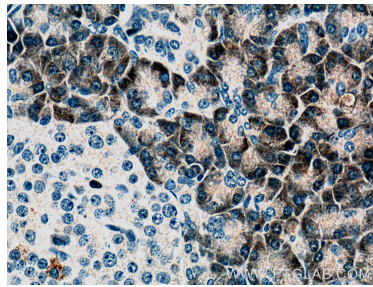
Selected Validation Data



pig pancreas tissue were subjected to SDS PAGE followed by western blot with 66397-1-Ig (PLA2G1B Antibody) at dilution of 1:3000 incubated at room temperature for 1.5 hours.



Immunohistochemical analysis of paraffin-embedded human pancreas tissue slide using 66397-1-Ig (PLA2G1B antibody) at dilution of 1:200 (under 10x lens).



Immunohistochemical analysis of paraffin-embedded human pancreas tissue slide using 66397-1-Ig (PLA2G1B antibody) at dilution of 1:200 (under 40x lens).