

For Research Use Only

# CD36 Monoclonal antibody

Catalog Number: 66395-1-Ig **13 Publications**



## Basic Information

<b>Catalog Number:</b> 66395-1-Ig	<b>GenBank Accession Number:</b> BC008406	<b>Purification Method:</b> Protein A purification
<b>Size:</b> 1800 µg/ml	<b>GeneID (NCBI):</b> 948	<b>CloneNo.:</b> 1A8C5
<b>Source:</b> Mouse	<b>UNIPROT ID:</b> P16671	<b>Recommended Dilutions:</b> WB 1:1000-1:6000 IHC 1:500-1:2000 IF 1:200-1:800
<b>Isotype:</b> IgG1	<b>Full Name:</b> CD36 molecule (thrombospondin receptor)	
<b>Immunogen Catalog Number:</b> AG13541	<b>Calculated MW:</b> 472 aa, 53 kDa	
	<b>Observed MW:</b> 88 kDa	

## Applications

**Tested Applications:**  
FC, IF-P, IHC, WB, ELISA

**Cited Applications:**  
WB, IF, IHC

**Species Specificity:**  
human

**Cited Species:**  
human

**Note-IHC: suggested antigen retrieval with TE buffer pH 9.0; (\*) Alternatively, antigen retrieval may be performed with citrate buffer pH 6.0**

**Positive Controls:**

**WB :** human heart tissue, human milk, human spleen tissue, human placenta tissue

**IHC :** human spleen tissue, human heart tissue

**IF :** human liver cancer tissue,

## Background Information

CD36, also named as GP3B and GP4, is an 88-kDa membrane glycoprotein present on platelets, monocytes, erythroid precursors, endothelial cells, and several tumor cell lines. CD36 binds to collagen, thrombospondin, anionic phospholipids, long chain fatty acids and may function in the transport and/or as a regulator of fatty acid transport and oxidized LDL. CD36 may function as a cell adhesion molecule. It mediates cytoadherence of Plasmodium falciparum parasitized erythrocytes. Mutation of CD36 will cause platelet glycoprotein IV deficiency which known as CD36 deficiency. Genetic variations in CD36 are associated with susceptibility to coronary heart disease type 7 (CHDS7).

## Notable Publications

Author	Pubmed ID	Journal	Application
Yan Cao	34599913	Eur J Pharmacol	WB
Simon Riis	31430404	Scand J Med Sci Sports	IHC
Chenxi Liang	35656026	Oxid Med Cell Longev	WB

## Storage

**Storage:**  
Store at -20°C. Stable for one year after shipment.  
**Storage Buffer:**  
PBS with 0.02% sodium azide and 50% glycerol pH 7.3.  
Aliquoting is unnecessary for -20°C storage

For technical support and original validation data for this product please contact:

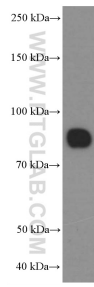
T: 4006900926

E: Proteintech-CN@ptglab.com

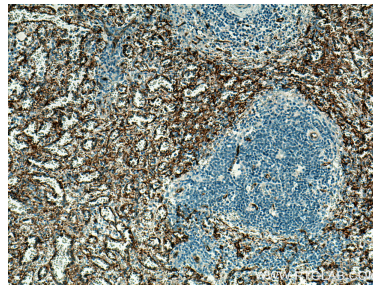
W: ptgcn.com

**This product is exclusively available under Proteintech Group brand and is not available to purchase from any other manufacturer.**

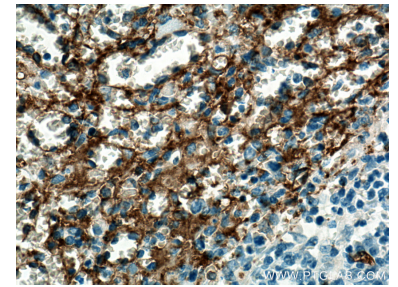
## Selected Validation Data



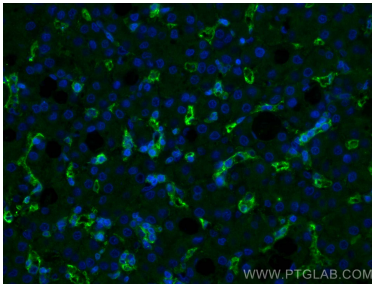
human heart tissue were subjected to SDS PAGE followed by western blot with 66395-1-Ig (CD36 Antibody) at dilution of 1:3000 incubated at room temperature for 1.5 hours.



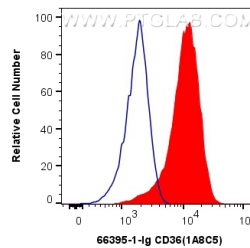
Immunohistochemical analysis of paraffin-embedded human spleen tissue slide using 66395-1-Ig (CD36 antibody) at dilution of 1:1000 (under 10x lens). Heat mediated antigen retrieval with Tris-EDTA buffer (pH 9.0).



Immunohistochemical analysis of paraffin-embedded human spleen tissue slide using 66395-1-Ig (CD36 antibody) at dilution of 1:1000 (under 40x lens). Heat mediated antigen retrieval with Tris-EDTA buffer (pH 9.0).



Immunofluorescent analysis of (4% PFA) fixed human liver cancer tissue using CD36 antibody (66395-1-Ig, Clone: 1A8C5) at dilution of 1:400 and CoraLite®488-Conjugated AffiniPure Goat Anti-Mouse IgG(H+L).



$1 \times 10^6$  THP-1 cells were surface stained with 0.4 ug Anti-Human CD36 (66395-1-Ig, Clone:1A8C5) and CoraLite®488-Conjugated AffiniPure Goat Anti-Mouse IgG(H+L) at dilution 1:1000 (red), or 0.4 ug Mouse IgG1 Isotype Control (MOPC-21) (65124-1-Ig, Clone: MOPC-21) (blue). Cells were not fixed.