

For Research Use Only

Calbindin-D28k Monoclonal antibody

Catalog Number: 66394-1-Ig **11 Publications**



Basic Information

Catalog Number:

66394-1-Ig

Concentration:

1500 ug/ml

Source:

Mouse

Isotype:

IgG1

Immunogen Catalog Number:

AG5861

GenBank Accession Number:

BC006478

GeneID (NCBI):

793

UNIPROT ID:

P05937

Full Name:

calbindin 1, 28kDa

Calculated MW:

30 kDa

Observed MW:

28 kDa

Purification Method:

Protein A purification

CloneNo.:

1F8B9

Recommended Dilutions:

WB 1:5000-1:50000

IHC 1:8000-1:32000

IF-P 1:200-1:800

IF-Fro 1:200-1:800

Applications

Tested Applications:

WB, IHC, IF-P, IF-Fro, ELISA

Cited Applications:

WB, IHC, IF

Species Specificity:

human, mouse, rat, pig, rabbit

Cited Species:

human, mouse, rat

Note-IHC: suggested antigen retrieval with TE buffer pH 9.0; (*) Alternatively, antigen retrieval may be performed with citrate buffer pH 6.0

Positive Controls:

WB: rabbit brain tissue, PC-12 cells, fetal human brain tissue, rat brain tissue, mouse brain tissue, pig cerebellum tissue, rabbit cerebellum tissue, rat cerebellum tissue, mouse cerebellum tissue

IHC: rat cerebellum tissue, human kidney tissue, human small intestine tissue, human brain tissue, mouse kidney tissue, rat kidney tissue

IF-P: mouse cerebellum tissue, human kidney tissue, rat cerebellum tissue

IF-Fro: mouse cerebellum tissue,

Background Information

Calbindin-D28k is a member of the calcium-binding protein superfamily that includes calmodulin and troponin C. It is a cytosolic calcium binding protein highly expressed in the distal tubule, intestines, central nervous system, primary murine osteoblast cells and in several other organs. It plays an important role in the intracellular calcium homeostasis, its strong buffering capacity prevents cytotoxic effect of high concentration of free calcium in kidney, brain, pancreas, and intestine.

Notable Publications

Author	Pubmed ID	Journal	Application
Chang-Hui Chen	34795559	Front Neurosci	IF
Fei Wang	33762741	Cell Death Differ	IF
Qianhui Wang	39509016	Endocrine	WB

Storage

Storage:

Store at -20°C. Stable for one year after shipment.

Storage Buffer:

PBS with 0.02% sodium azide and 50% glycerol, pH7.3

Aliquoting is unnecessary for -20°C storage

For technical support and original validation data for this product please contact:

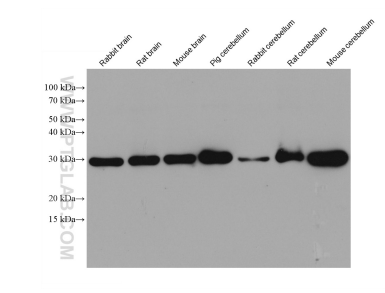
T: 4006900926

E: Proteintech-CN@ptglab.com

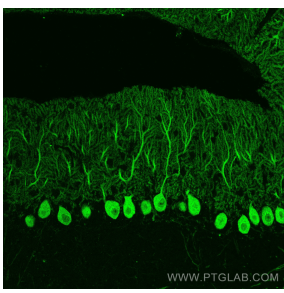
W: ptgcn.com

This product is exclusively available under Proteintech Group brand and is not available to purchase from any other manufacturer.

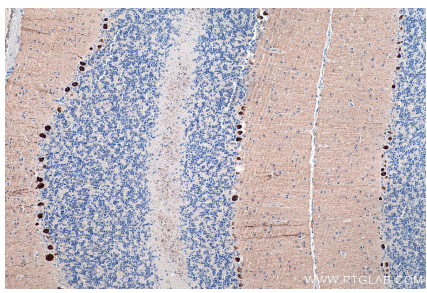
Selected Validation Data



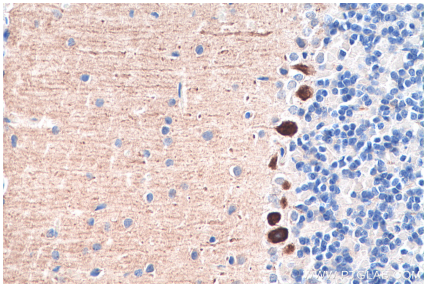
Various lysates were subjected to SDS PAGE followed by western blot with 66394-1-Ig (Calbindin-D28k antibody) at dilution of 1:10000 incubated at room temperature for 1.5 hours.



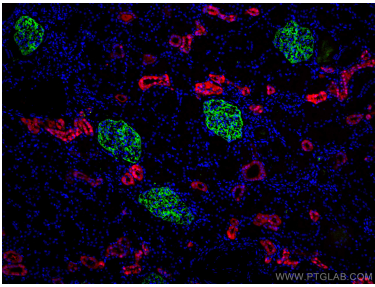
Immunofluorescent analysis of (4% PFA) fixed paraffin-embedded mouse cerebellum tissue using Calbindin-D28k antibody (66394-1-Ig, Clone: 1F8B9) at dilution of 1:400 and Multi-rAb CoraLite® Plus 488-Goat Anti-Mouse Recombinant Secondary Antibody (H+L) (RGAM002). Heat mediated antigen retrieval with Tris-EDTA buffer (pH 9.0).



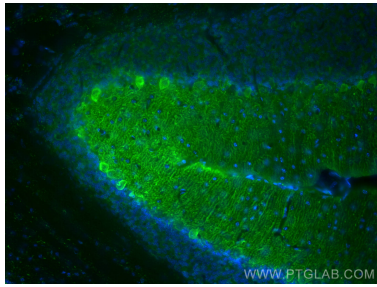
Immunohistochemical analysis of paraffin-embedded rat cerebellum tissue slide using 66394-1-Ig (Calbindin-D28k antibody) at dilution of 1:16000 (under 10x lens). Heat mediated antigen retrieval with Tris-EDTA buffer (pH 9.0).



Immunohistochemical analysis of paraffin-embedded rat cerebellum tissue slide using 66394-1-Ig (Calbindin-D28k antibody) at dilution of 1:16000 (under 40x lens). Heat mediated antigen retrieval with Tris-EDTA buffer (pH 9.0).



Immunofluorescent analysis of (4% PFA) fixed human kidney tissue using Calbindin-D28k antibody (66394-1-Ig, Clone: 1F8B9) at dilution of 1:300 and CoraLite® 594-Conjugated AffiniPure Goat Anti-Mouse IgG(H+L), Podocalyxin antibody(18150-1-AP, green).



Immunofluorescent analysis of (4% PFA) fixed frozen OCT-embedded mouse cerebellum tissue using 66394-1-Ig (Calbindin-D28k antibody) at dilution of 1:400 and CoraLite488-Conjugated AffiniPure Goat Anti-Mouse IgG(H+L).