

For Research Use Only

# FKBPL Monoclonal antibody, PBS Only

Catalog Number: 66389-1-PBS



## Basic Information

Catalog Number: 66389-1-PBS	GenBank Accession Number: BC004168	Purification Method: Protein A purification
Concentration: 2000 µg/ml	GeneID (NCBI): 63943	CloneNo.: 2H10B10
Source: Mouse	UNIPROT ID: Q9UIM3	
Isotype: IgG1	Full Name: FK506 binding protein like	
Immunogen Catalog Number: AG0112	Calculated MW: 349 aa, 38 kDa	
	Observed MW: 42 kDa	

## Applications

**Tested Applications:**  
WB, IHC, IF/ICC, FC (Intra), Indirect ELISA

**Species Specificity:**  
human, mouse, rat

## Background Information

FKBPL, also named as DIR1, NG7 and WISp39, has similarity to the immunophilin protein family, which plays a role in immunoregulation and basic cellular processes involving protein folding and trafficking. FKBPL levels may be a prognostic indicator and determinant of response to endocrine therapy (PMID:20103631, 15664193). It can be detected the band between 38 kDa and 48 kDa by western blot.

## Storage

**Storage:**  
Store at -80°C.  
**The product is shipped with ice packs. Upon receipt, store it immediately at -80°C**

**Storage Buffer:**  
PBS only, pH7.3

For technical support and original validation data for this product please contact:

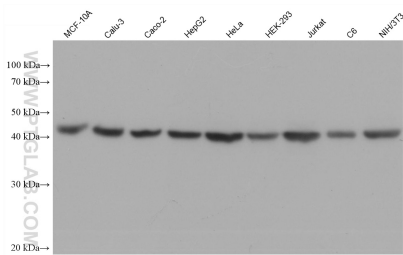
T: 4006900926

E: [Proteintech-CN@ptglab.com](mailto:Proteintech-CN@ptglab.com)

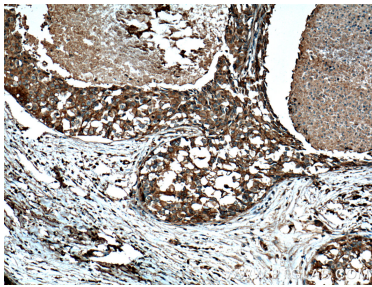
W: [ptgcn.com](http://ptgcn.com)

**This product is exclusively available under Proteintech Group brand and is not available to purchase from any other manufacturer.**

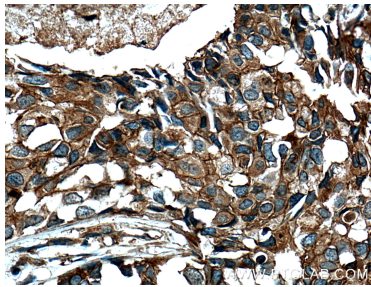
Selected Validation Data



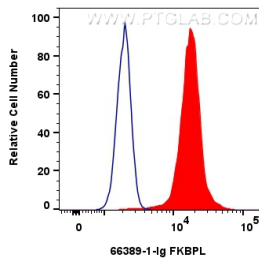
Various lysates were subjected to SDS PAGE followed by western blot with 66389-1-Ig (FKBPL antibody) at dilution of 1:5000 incubated at room temperature for 1.5 hours. This data was developed using the same antibody clone with 66389-1-PBS in a different storage buffer formulation.



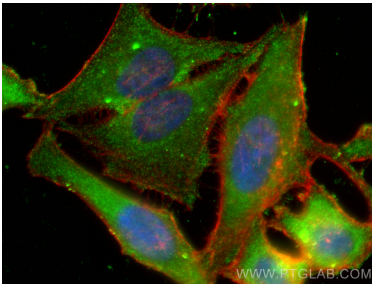
Immunohistochemical analysis of paraffin-embedded human breast cancer tissue slide using 66389-1-Ig (FKBPL Antibody) at dilution of 1:200 (under 10x lens). Heat mediated antigen retrieval with Tris-EDTA buffer (pH 9.0). This data was developed using the same antibody clone with 66389-1-PBS in a different storage buffer formulation.



Immunohistochemical analysis of paraffin-embedded human breast cancer tissue slide using 66389-1-Ig (FKBPL Antibody) at dilution of 1:200 (under 40x lens). Heat mediated antigen retrieval with Tris-EDTA buffer (pH 9.0). This data was developed using the same antibody clone with 66389-1-PBS in a different storage buffer formulation.



1x10<sup>6</sup> HeLa cells were intracellularly stained with 0.4 ug FKBPL Monoclonal antibody (66389-1-Ig, Clone:2H10B10) and CoraLite®488-Conjugated AffiniPure Goat Anti-Mouse IgG(H+L) (SA00013-1)(red), or 0.4 ug Mouse IgG1 Isotype Control (MOPC-21) (65124-1-Ig, Clone: MOPC-21) (blue). Cells were fixed with 4% PFA and permeabilized with Flow Cytometry Perm Buffer (PF00011-C). This data was developed using the same antibody clone with 66389-1-PBS in a



Immunofluorescent analysis of (-20°C Ethanol) fixed HeLa cells using FKBPL antibody (66389-1-Ig, Clone: 2H10B10 ) at dilution of 1:800 and CoraLite®488-Conjugated Goat Anti-Mouse IgG(H+L) (SA00013-1), CL594-Phalloidin (red). This data was developed using the same antibody clone with 66389-1-PBS in a different storage buffer formulation.