

For Research Use Only

# FKBPL Monoclonal antibody

Catalog Number: 66389-1-Ig **1 Publications**



## Basic Information

Catalog Number: 66389-1-Ig	GenBank Accession Number: BC004168	Purification Method: Protein A purification
Concentration: 1500 ug/ml	GeneID (NCBI): 63943	CloneNo.: 2H10B10
Source: Mouse	UNIPROT ID: Q9UIM3	Recommended Dilutions: WB 1:2000-1:10000 IHC 1:100-1:400 IF/ICC 1:400-1:1600
Isotype: IgG1	Full Name: FK506 binding protein like	
Immunogen Catalog Number: AG0112	Calculated MW: 349 aa, 38 kDa Observed MW: 42 kDa	

## Applications

Tested Applications: WB, IHC, IF/ICC, FC (Intra), ELISA	Positive Controls: WB : MCF-10A cells, HeLa cells, HEK-293 cells, Jurkat cells, Raji cells, HSC-T6 cells, NIH/3T3 cells, 4T1 cells, Calu-3 cells, Caco-2 cells, HepG2 cells, C6 cells IHC : human breast cancer tissue, human testis tissue IF/ICC : HeLa cells,
Cited Applications: WB	
Species Specificity: human, mouse, rat	
Cited Species: human	
<b>Note-IHC: suggested antigen retrieval with TE buffer pH 9.0; (*) Alternatively, antigen retrieval may be performed with citrate buffer pH 6.0</b>	

## Background Information

FKBPL, also named as DIR1, NG7 and WISp39, has similarity to the immunophilin protein family, which plays a role in immunoregulation and basic cellular processes involving protein folding and trafficking. FKBPL levels may be a prognostic indicator and determinant of response to endocrine therapy (PMID:20103631, 15664193). It can be detected the band between 38 kDa and 48 kDa by western blot.

## Notable Publications

Author	Pubmed ID	Journal	Application
Sahar Masoumeh Ghorbanpour	36652019	Cell Mol Life Sci	WB

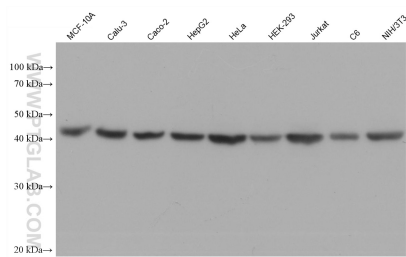
## Storage

Storage:  
Store at -20°C. Stable for one year after shipment.  
Storage Buffer:  
PBS with 0.02% sodium azide and 50% glycerol, pH7.3  
Aliquoting is unnecessary for -20°C storage

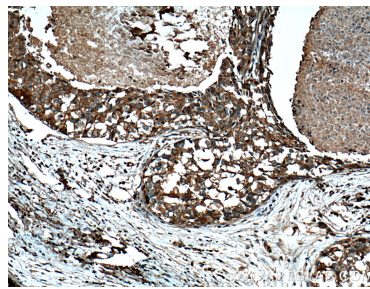
For technical support and original validation data for this product please contact:  
T: 4006900926 E: Proteintech-CN@ptglab.com W: ptgcn.com

This product is exclusively available under Proteintech Group brand and is not available to purchase from any other manufacturer.

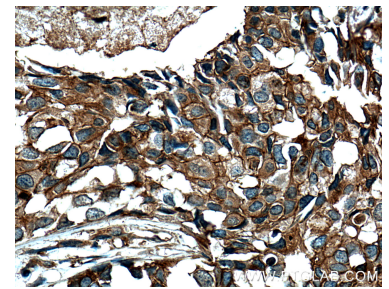
## Selected Validation Data



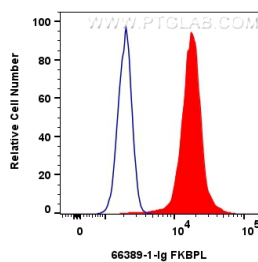
Various lysates were subjected to SDS PAGE followed by western blot with 66389-1-Ig (FKBPL antibody) at dilution of 1:5000 incubated at room temperature for 1.5 hours.



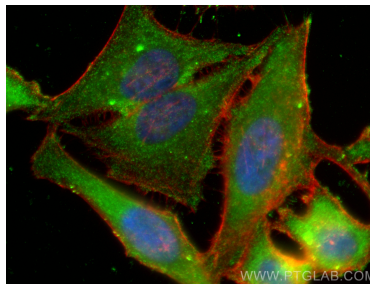
Immunohistochemical analysis of paraffin-embedded human breast cancer tissue slide using 66389-1-Ig (FKBPL Antibody) at dilution of 1:200 (under 10x lens). Heat mediated antigen retrieval with Tris-EDTA buffer (pH 9.0).



Immunohistochemical analysis of paraffin-embedded human breast cancer tissue slide using 66389-1-Ig (FKBPL Antibody) at dilution of 1:200 (under 40x lens). Heat mediated antigen retrieval with Tris-EDTA buffer (pH 9.0).



1x10<sup>6</sup> HeLa cells were intracellularly stained with 0.4 ug FKBPL Monoclonal antibody (66389-1-Ig, Clone: 2H10B10) and CoraLite®488-Conjugated AffiniPure Goat Anti-Mouse IgG(H+L) (SA00013-1) (red), or 0.4 ug Mouse IgG1 Isotype Control (MOPC-21) (65124-1-Ig, Clone: MOPC-21) (blue). Cells were fixed with 4% PFA and permeabilized with Flow Cytometry Perm Buffer (PF00011-C).



Immunofluorescent analysis of (-20°C Ethanol) fixed HeLa cells using FKBPL antibody (66389-1-Ig, Clone: 2H10B10) at dilution of 1:800 and CoraLite®488-Conjugated Goat Anti-Mouse IgG(H+L) (SA00013-1), CL594-Phalloidin (red).