

For Research Use Only

BMP2 Monoclonal antibody, PBS Only

Catalog Number: 66383-1-PBS



Basic Information

Catalog Number:

66383-1-PBS

Size:

1mg/ml

Source:

Mouse

Isotype:

IgG2a

Immunogen Catalog Number:

AG13501

GenBank Accession Number:

BC069214

GeneID (NCBI):

650

UNIPROT ID:

P12643

Full Name:

bone morphogenetic protein 2

Calculated MW:

396 aa, 44 kDa

Observed MW:

45 kDa

Purification Method:

Protein A purification

CloneNo.:

1C5C2

Applications

Tested Applications:

WB, IHC, Indirect ELISA

Species Specificity:

human, pig

Background Information

Bone morphogenetic protein-2 (BMP-2) is a member of the transforming growth factor-beta (TGFB) superfamily. BMP2 is synthesized as a 60 kDa precursor that is processed in the secretory pathway to a small 18 kDa monomer; 2 monomers then associate to form the active 30 kDa homodimer, which binds to its receptor. There is also a 40-45 kDa form of BMP2, as an amino-terminal propeptide. BMP2 can induce bone formation and regeneration during early embryonic development. It is involved in the hedgehog pathway, TGF beta signaling pathway, and cytokine-cytokine receptor interaction. Two band isoforms of BMP2 are present (PMID: 35846837).

Storage

Storage:

Store at -80°C.

The product is shipped with ice packs. Upon receipt, store it immediately at -80°C

Storage Buffer:

PBS Only

For technical support and original validation data for this product please contact:

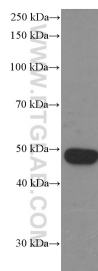
T: 4006900926

E: Proteintech-CN@ptglab.com

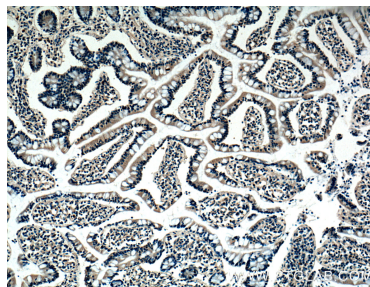
W: ptgcn.com

This product is exclusively available under Proteintech Group brand and is not available to purchase from any other manufacturer.

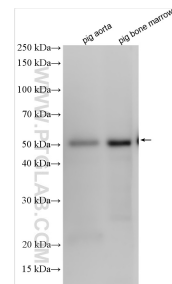
Selected Validation Data



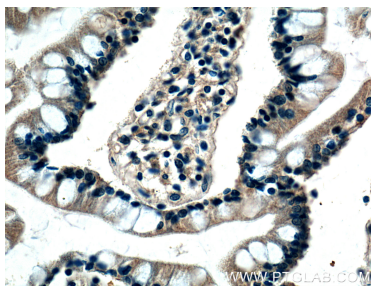
pig bone marrow tissue were subjected to SDS PAGE followed by western blot with 66383-1-Ig (BMP2 Antibody) at dilution of 1:2000 incubated at room temperature for 1.5 hours. This data was developed using the same antibody clone with 66383-1-PBS in a different storage buffer formulation.



Immunohistochemical analysis of paraffin-embedded human small intestine tissue slide using 66383-1-Ig (BMP2 Antibody) at dilution of 1:200 (under 10x lens). This data was developed using the same antibody clone with 66383-1-PBS in a different storage buffer formulation.



Various lysates were subjected to SDS PAGE followed by western blot with 66383-1-Ig (BMP2 antibody) at dilution of 1:600 incubated at room temperature for 1.5 hours. This data was developed using the same antibody clone with 66383-1-PBS in a different storage buffer formulation.



Immunohistochemical analysis of paraffin-embedded human small intestine tissue slide using 66383-1-Ig (BMP2 Antibody) at dilution of 1:200 (under 40x lens). This data was developed using the same antibody clone with 66383-1-PBS in a different storage buffer formulation.