

For Research Use Only

Osteoglycin Monoclonal antibody, PBS Only (Capture)

Catalog Number: 66382-1-PBS



Basic Information

Catalog Number:	66382-1-PBS	GenBank Accession Number:	BC037273	Purification Method:	Protein G purification
Concentration:	1mg/ml	GeneID (NCBI):	4969	CloneNo.:	2A5F11
Source:	Mouse	UNIPROT ID:	P20774		
Isotype:	IgG1	Full Name:	osteoglycin		
Immunogen Catalog Number:	AG3484	Calculated MW:	298 aa, 34 kDa		
		Observed MW:	30-40 kDa		

Applications

Tested Applications:
WB, IHC, Cytometric bead array, Sandwich ELISA, Indirect ELISA, Sample test

Species Specificity:
human, pig

Background Information

This gene encodes a member of the small leucine-rich proteoglycan (SLRP) family of proteins. The encoded protein induces ectopic bone formation in conjunction with transforming growth factor beta and may regulate osteoblast differentiation. High expression of the encoded protein may be associated with elevated heart left ventricular mass. Alternative splicing results in multiple transcript variants which forms proteins with different molecular weight.

Storage

Storage:
Store at -80°C.
The product is shipped with ice packs. Upon receipt, store it immediately at -80°C

Storage Buffer:
PBS Only

For technical support and original validation data for this product please contact:

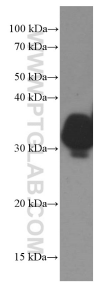
T: 4006900926

E: Proteintech-CN@ptglab.com

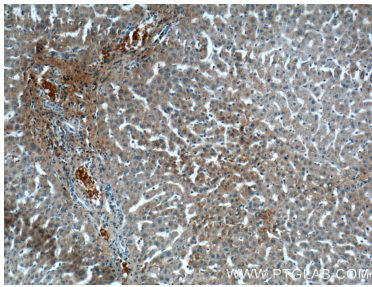
W: ptgcn.com

This product is exclusively available under Proteintech Group brand and is not available to purchase from any other manufacturer.

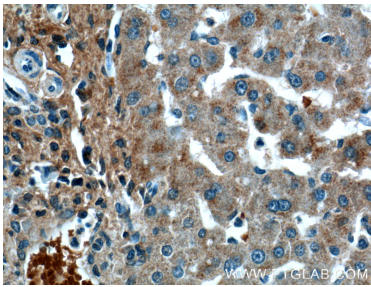
Selected Validation Data



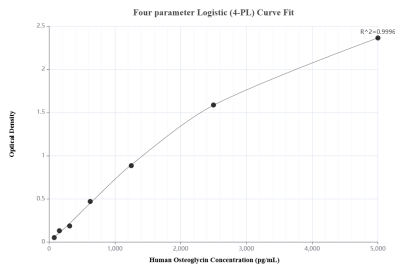
Human artery tissue were subjected to SDS PAGE followed by western blot with 66382-1-Ig (Osteoglycin Antibody) at dilution of 1:3000 incubated at room temperature for 1.5 hours. This data was developed using the same antibody clone with 66382-1-PBS in a different storage buffer formulation.



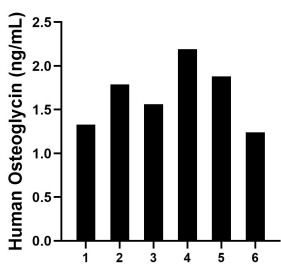
Immunohistochemical analysis of paraffin-embedded human liver tissue slide using 66382-1-Ig (Osteoglycin Antibody) at dilution of 1:200 (under 10x lens). This data was developed using the same antibody clone with 66382-1-PBS in a different storage buffer formulation.



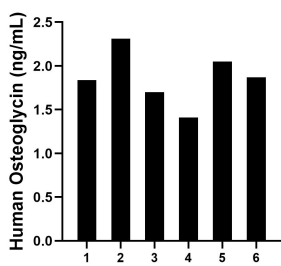
Immunohistochemical analysis of paraffin-embedded human liver tissue slide using 66382-1-Ig (Osteoglycin Antibody) at dilution of 1:200 (under 40x lens). This data was developed using the same antibody clone with 66382-1-PBS in a different storage buffer formulation.



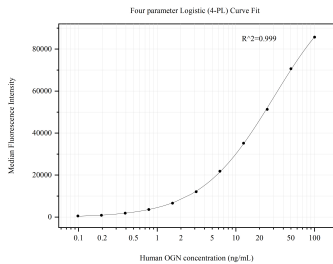
Sandwich ELISA standard curve of MP50723-1, Human Osteoglycin Monoclonal Matched Antibody Pair - PBS only. 66382-1-PBS was coated to a plate as the capture antibody and incubated with serial dilutions of standard Ag3484. 66382-2-PBS was HRP conjugated as the detection antibody. Range: 78.1-5000 pg/mL.



Plasma of six individual healthy human donors was measured. The Osteoglycin concentration of detected samples was determined to be 1.7 ng/mL with a range of 1.2-2.2 ng/mL.



Serum of six individual healthy human donors was measured. The Osteoglycin concentration of detected samples was determined to be 1.9 ng/mL with a range of 1.4-2.3 ng/mL.



Cytometric bead array standard curve of MP50723-1, OGN/Osteoglycin Monoclonal Matched Antibody Pair, PBS Only. Capture antibody: 66382-1-PBS. Detection antibody: 66382-2-PBS. Standard:Ag3484. Range: 0.098-100 ng/mL.