

For Research Use Only

# Occludin Monoclonal antibody, PBS Only (Capture/Detector)

Catalog Number: 66378-1-PBS

Featured Product



## Basic Information

Catalog Number:

66378-1-PBS

Size:

1000 ug/ml

Source:

Mouse

Isotype:

IgG1

Immunogen Catalog Number:

AG4057

GenBank Accession Number:

BC029886

GeneID (NCBI):

4950

UNIPROT ID:

Q16625

Full Name:

occludin

Calculated MW:

522 aa, 59 kDa

Observed MW:

59 kDa

Purification Method:

Protein A purification

CloneNo.:

1D3C4

## Applications

Tested Applications:

WB, IHC, Cytometric bead array, Indirect ELISA

Species Specificity:

human, mouse, rat, pig

## Background Information

Occludin is an integral membrane protein located at the tight junction. It is a tetraspanin protein with four transmembrane domains, intracellular N and C termini and two extracellular loops. Occludin plays a role in the formation and regulation of the tight junction paracellular permeability barrier. Occludin can exist in different isoforms, owing to modifications at the posttranscriptional and posttranslational levels, the monomeric occludin migrates as 53-65 kDa on SDS-PAGE (PMID: 22083955; 19457074).

## Storage

Storage:

Store at -80°C.

The product is shipped with ice packs. Upon receipt, store it immediately at -80°C

Storage Buffer:

PBS Only

For technical support and original validation data for this product please contact:

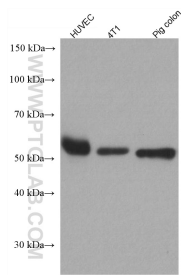
T: 4006900926

E: [Proteintech-CN@ptglab.com](mailto:Proteintech-CN@ptglab.com)

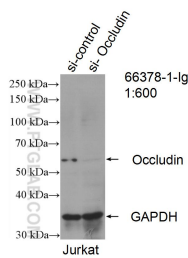
W: [ptgcn.com](http://ptgcn.com)

This product is exclusively available under Proteintech Group brand and is not available to purchase from any other manufacturer.

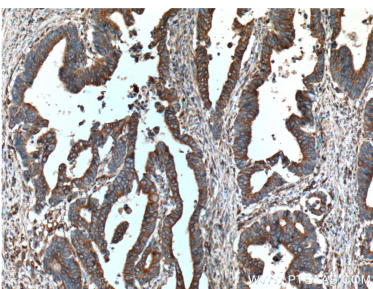
Selected Validation Data



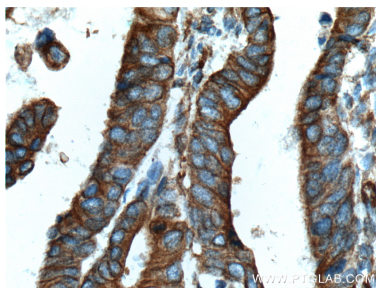
Various lysates were subjected to SDS PAGE followed by western blot with 66378-1-Ig (Occludin antibody) at dilution of 1:10000 incubated at room temperature for 1.5 hours. This data was developed using the same antibody clone with 66378-1-PBS in a different storage buffer formulation.



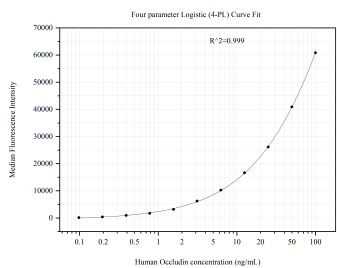
WB result of Occludin antibody (66378-1-Ig; 1:600; incubated at room temperature for 1.5 hours) with sh-Control and sh-Occludin transfected Jurkat cells. This data was developed using the same antibody clone with 66378-1-PBS in a different storage buffer formulation.



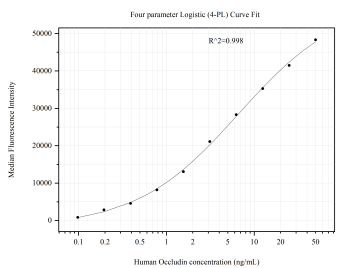
Immunohistochemical analysis of paraffin-embedded human colon cancer tissue slide using 66378-1-Ig (Occludin antibody) at dilution of 1:400 (under 10x lens. Heat mediated antigen retrieval with Tris-EDTA buffer (pH 9.0). This data was developed using the same antibody clone with 66378-1-PBS in a different storage buffer formulation.



Immunohistochemical analysis of paraffin-embedded human colon cancer tissue slide using 66378-1-Ig (Occludin antibody) at dilution of 1:400 (under 40x lens. Heat mediated antigen retrieval with Tris-EDTA buffer (pH 9.0). This data was developed using the same antibody clone with 66378-1-PBS in a different storage buffer formulation.



Cytometric bead array standard curve of MP51160-1, Occludin Monoclonal Matched Antibody Pair, PBS Only. Capture antibody: 66378-2-PBS. Detection antibody: 66378-1-PBS. Standard:Ag4057. Range: 0.098-100 ng/mL.



Cytometric bead array standard curve of MP51160-3, Occludin Monoclonal Matched Antibody Pair, PBS Only. Capture antibody: 66378-1-PBS. Detection antibody: 66378-4-PBS. Standard:Ag4057. Range: 0.098-50 ng/mL.