

For Research Use Only

TINP1 Monoclonal antibody

Catalog Number: 66374-1-Ig



Basic Information

| | | |
|--|---|---|
| Catalog Number: 66374-1-Ig | GenBank Accession Number: BC005288 | Purification Method: Protein G purification |
| Size: 1500 µg/ml | GeneID (NCBI): 10412 | CloneNo.: 1E3B11 |
| Source: Mouse | UNIPROT ID: O95478 | Recommended Dilutions: WB 1:1000-1:8000 IHC 1:50-1:500 IF 1:200-1:800 |
| Isotype: IgG1 | Full Name: TGF beta-inducible nuclear protein 1 | |
| Immunogen Catalog Number: AG8822 | Calculated MW: 260 aa, 30 kDa | |
| | Observed MW: 34 kDa | |

Applications

Tested Applications:
IF/ICC, IHC, WB, ELISA

Species Specificity:
human

Note-IHC: suggested antigen retrieval with TE buffer pH 9.0; (*) Alternatively, antigen retrieval may be performed with citrate buffer pH 6.0

Positive Controls:
WB : L02 cells, HEK-293 cells, HepG2 cells
IHC : human breast cancer tissue,
IF : HEK-293 cells,

Background Information

TINP1 (TGF beta inducible nuclear protein 1) was widely expressed in various cell lines. TINP1 overexpression significantly promoted tumor cell proliferation, which may be associated with the downregulation of p53 expression. Furthermore, TINP1 promoted a number of cell lines to the S phase of the cell cycle. TINP1 promotes cell proliferation and significantly reduces p53 and p21 expression.

Storage

Storage:
Store at -20°C. Stable for one year after shipment.

Storage Buffer:
PBS with 0.02% sodium azide and 50% glycerol pH 7.3.

Aliquoting is unnecessary for -20°C storage

For technical support and original validation data for this product please contact:

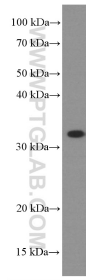
T: 4006900926

E: Proteintech-CN@ptglab.com

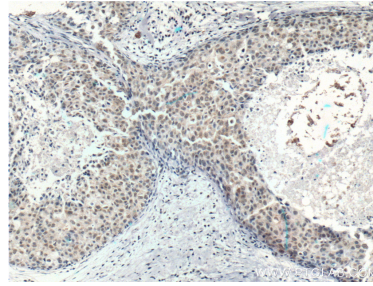
W: ptgcn.com

This product is exclusively available under Proteintech Group brand and is not available to purchase from any other manufacturer.

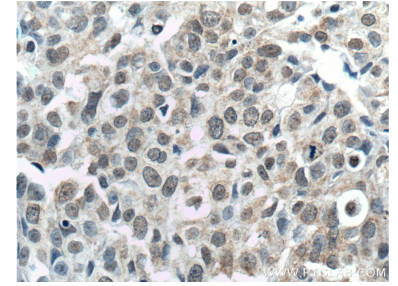
Selected Validation Data



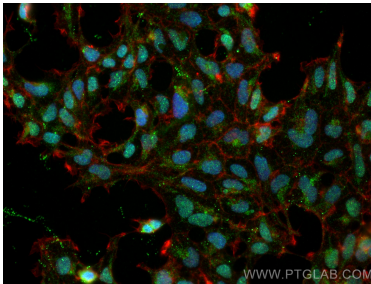
L02 cells were subjected to SDS PAGE followed by western blot with 66374-1-Ig (TINP1 Antibody) at dilution of 1:4000 incubated at room temperature for 1.5 hours.



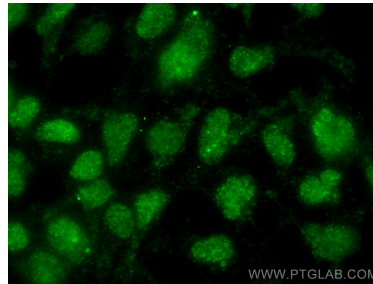
Immunohistochemical analysis of paraffin-embedded human breast cancer tissue slide using 66374-1-Ig (TINP1 Antibody) at dilution of 1:200 (under 10x lens). Heat mediated antigen retrieval with Tris-EDTA buffer (pH 9.0).



Immunohistochemical analysis of paraffin-embedded human breast cancer tissue slide using 66374-1-Ig (TINP1 Antibody) at dilution of 1:200 (under 40x lens). Heat mediated antigen retrieval with Tris-EDTA buffer (pH 9.0).



Immunofluorescent analysis of (4% PFA) fixed HEK-293 cells using TINP1 antibody (66374-1-Ig, Clone: 1E3B11) at dilution of 1:400 and CoraLite@488-Conjugated AffiniPure Goat Anti-Mouse IgG(H+L).



Immunofluorescent analysis of (4% PFA) fixed HEK-293 cells using TINP1 antibody (66374-1-Ig, Clone: 1E3B11) at dilution of 1:400 and CoraLite@488-Conjugated AffiniPure Goat Anti-Mouse IgG(H+L).