

For Research Use Only

PGRMC1 Monoclonal antibody, PBS Only

Catalog Number: 66372-1-PBS

Featured Product



Basic Information

Catalog Number:

66372-1-PBS

Size:

1mg/ml

Source:

Mouse

Isotype:

IgG1

Immunogen Catalog Number:

AG3643

GenBank Accession Number:

BC034238

GeneID (NCBI):

10857

UNIPROT ID:

O00264

Full Name:

progesterone receptor membrane component 1

Calculated MW:

195 aa, 22 kDa

Observed MW:

25-27 kDa

Purification Method:

Protein G purification

CloneNo.:

1C10D11

Applications

Tested Applications:

WB, IHC, IF/ICC, IF-P, Indirect ELISA

Species Specificity:

human, mouse, rat, pig

Background Information

Progesterone receptor membrane component 1 (PGRMC1) is a member of a multi-protein progesterone-binding complex. However, PGRMC1 shares homology with cytochrome b5-related proteins rather than hormone receptors (PMID: 18992768). It is a heme binding protein with binding sites for Src homology (SH2) and SH3 domain-containing proteins (PMID: 17583495). PGRMC1 is overexpressed in a variety of cancers, and thus represents an important biomarker for cancer progression and a potential target for anticancer drugs (PMID: 21730960). In nonmalignant tissues, PGRMC1 is highly expressed in the liver and kidney (PMID: 9705155; 20164297).

Storage

Storage:

Store at -80°C.

The product is shipped with ice packs. Upon receipt, store it immediately at -80°C

Storage Buffer:

PBS Only

For technical support and original validation data for this product please contact:

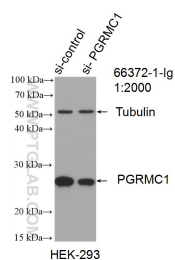
T: 4006900926

E: Proteintech-CN@ptglab.com

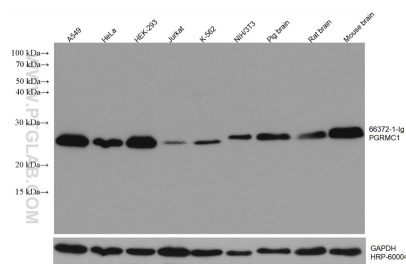
W: ptgcn.com

This product is exclusively available under Proteintech Group brand and is not available to purchase from any other manufacturer.

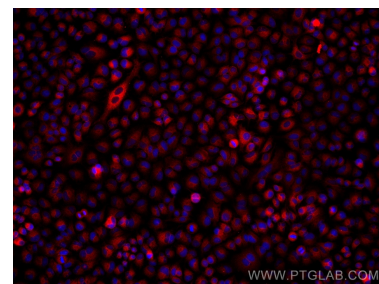
Selected Validation Data



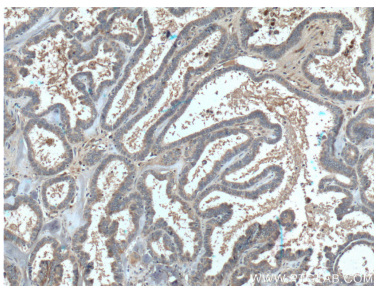
WB result of PGRMC1 antibody (66372-1-Ig; 1:2000; incubated at room temperature for 1.5 hours) with sh-Control and sh-PGRMC1 transfected HEK-293 cells. This data was developed using the same antibody clone with 66372-1-PBS in a different storage buffer formulation.



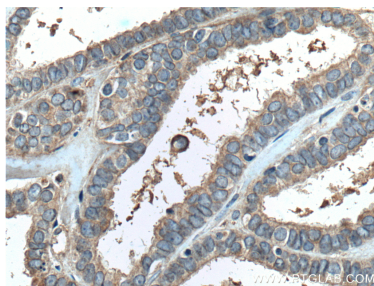
Various lysates were subjected to SDS PAGE followed by western blot with 66372-1-Ig (PGRMC1 antibody) at dilution of 1:10000 incubated at room temperature for 1.5 hours. The membrane was stripped and reblotted with HRP-conjugated GAPDH Monoclonal antibody (HRP-60004) as loading control. This data was developed using the same antibody clone with 66372-1-PBS in a different storage buffer formulation.



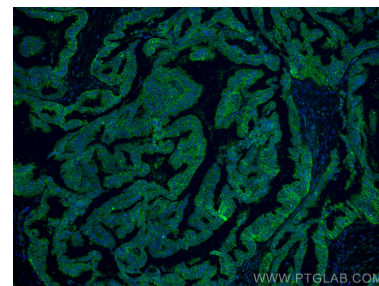
Immunofluorescent analysis of (4% PFA) fixed A549 cells using PGRMC1 antibody (66372-1-Ig, Clone: 1C10D11) at dilution of 1:2000 and Multi-rAb Coralite® Plus 594-Goat Anti-Mouse Recombinant Secondary Antibody (H+L) (Cat.NO. RGAM004). This data was developed using the same antibody clone with 66372-1-PBS in a different storage buffer formulation.



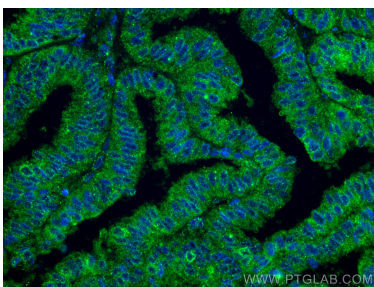
Immunohistochemical analysis of paraffin-embedded human ovary tumor tissue slide using 66372-1-Ig (PGRMC1 Antibody) at dilution of 1:400 (under 10x lens). Heat mediated antigen retrieval with Tris-EDTA buffer (pH 9.0). This data was developed using the same antibody clone with 66372-1-PBS in a different storage buffer formulation.



Immunohistochemical analysis of paraffin-embedded human ovary tumor tissue slide using 66372-1-Ig (PGRMC1 Antibody) at dilution of 1:400 (under 40x lens). Heat mediated antigen retrieval with Tris-EDTA buffer (pH 9.0). This data was developed using the same antibody clone with 66372-1-PBS in a different storage buffer formulation.



Immunofluorescent analysis of (4% PFA) fixed human ovary tumor tissue using PGRMC1 antibody (66372-1-Ig, Clone: 1C10D11) at dilution of 1:400 and Coralite®488-Conjugated AffiniPure Goat Anti-Mouse IgG(H+L). This data was developed using the same antibody clone with 66372-1-PBS in a different storage buffer formulation.



Immunofluorescent analysis of (4% PFA) fixed human ovary tumor tissue using PGRMC1 antibody (66372-1-Ig, Clone: 1C10D11) at dilution of 1:400 and Coralite®488-Conjugated AffiniPure Goat Anti-Mouse IgG(H+L). This data was developed using the same antibody clone with 66372-1-PBS in a different storage buffer formulation.