

For Research Use Only

PGRMC1 Monoclonal antibody

Catalog Number: 66372-1-Ig

Featured Product

1 Publications



Basic Information

Catalog Number:

66372-1-Ig

Size:

1400 µg/ml

Source:

Mouse

Isotype:

IgG1

Immunogen Catalog Number:

AG3643

GenBank Accession Number:

BC034238

GeneID (NCBI):

10857

UNIPROT ID:

O00264

Full Name:

progesterone receptor membrane component 1

Calculated MW:

195 aa, 22 kDa

Observed MW:

25-27 kDa

Purification Method:

Protein G purification

CloneNo.:

1C10D11

Recommended Dilutions:

WB 1:5000-1:50000

IHC 1:50-1:500

IF 1:200-1:800

Applications

Tested Applications:

IF-P, IHC, WB, ELISA

Cited Applications:

IF, WB

Species Specificity:

human, mouse, rat, pig

Cited Species:

human

Note-IHC: suggested antigen retrieval with TE buffer pH 9.0; (*) Alternatively, antigen retrieval may be performed with citrate buffer pH 6.0

Positive Controls:

WB: A549 cells, fetal human brain tissue, MCF-7 cells, NIH/3T3 cells, HEK-293 cells, HeLa cells, Jurkat cells, K-562 cells, pig brain tissue, rat brain tissue, mouse brain tissue

IHC: human ovary tumor tissue, human lung cancer tissue

IF: human ovary tumor tissue,

Background Information

Progesterone receptor membrane component 1 (PGRMC1) is a member of a multi-protein progesterone-binding complex. However, PGRMC1 shares homology with cytochrome b5-related proteins rather than hormone receptors (PMID: 18992768). It is a heme binding protein with binding sites for Src homology (SH2) and SH3 domain-containing proteins (PMID: 17583495). PGRMC1 is overexpressed in a variety of cancers, and thus represents an important biomarker for cancer progression and a potential target for anticancer drugs (PMID: 21730960). In nonmalignant tissues, PGRMC1 is highly expressed in the liver and kidney (PMID: 9705155; 20164297).

Notable Publications

Author	Pubmed ID	Journal	Application
Lihua Wang-Eckhardt	32924377	Biol Chem	IF, WB

Storage

Storage:

Store at -20°C. Stable for one year after shipment.

Storage Buffer:

PBS with 0.02% sodium azide and 50% glycerol pH 7.3.

Aliquoting is unnecessary for -20°C storage

For technical support and original validation data for this product please contact:

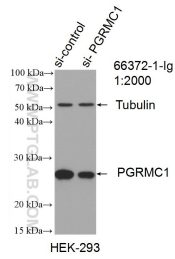
T: 4006900926

E: Proteintech-CN@ptglab.com

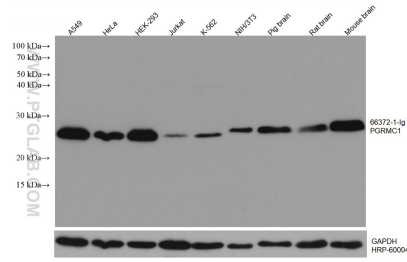
W: ptgcn.com

This product is exclusively available under Proteintech Group brand and is not available to purchase from any other manufacturer.

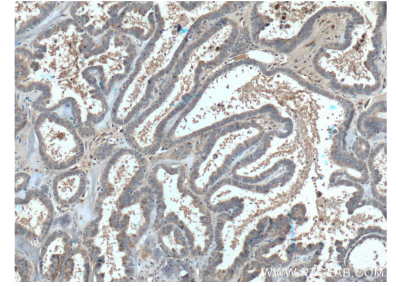
Selected Validation Data



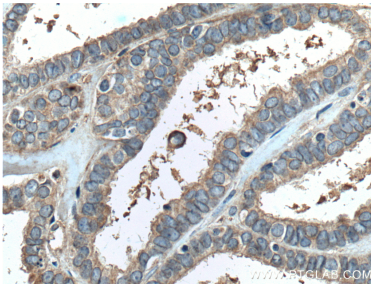
WB result of PGRMC1 antibody (66372-1-Ig; 1:2000; incubated at room temperature for 1.5 hours) with sh-Control and sh-PGRMC1 transfected HEK-293 cells.



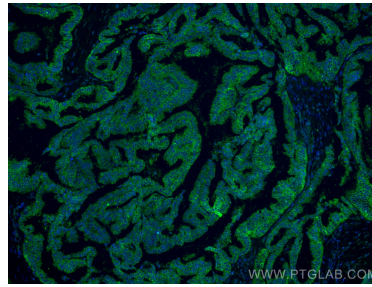
Various lysates were subjected to SDS PAGE followed by western blot with 66372-1-Ig (PGRMC1 antibody) at dilution of 1:10000 incubated at room temperature for 1.5 hours. The membrane was stripped and reblotted with HRP-conjugated GAPDH Monoclonal antibody (HRP-60004) as loading control.



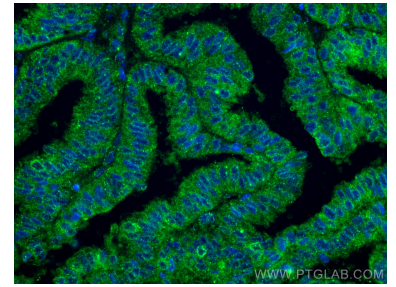
Immunohistochemical analysis of paraffin-embedded human ovary tumor tissue slide using 66372-1-Ig (PGRMC1 Antibody) at dilution of 1:400 (under 10x lens). Heat mediated antigen retrieval with Tris-EDTA buffer (pH 9.0).



Immunohistochemical analysis of paraffin-embedded human ovary tumor tissue slide using 66372-1-Ig (PGRMC1 Antibody) at dilution of 1:400 (under 40x lens). Heat mediated antigen retrieval with Tris-EDTA buffer (pH 9.0).



Immunofluorescent analysis of (4% PFA) fixed human ovary tumor tissue using PGRMC1 antibody (66372-1-Ig, Clone: 1C10D11) at dilution of 1:400 and CoraLite@488-Conjugated AffiniPure Goat Anti-Mouse IgG(H+L).



Immunofluorescent analysis of (4% PFA) fixed human ovary tumor tissue using PGRMC1 antibody (66372-1-Ig, Clone: 1C10D11) at dilution of 1:400 and CoraLite@488-Conjugated AffiniPure Goat Anti-Mouse IgG(H+L).