

D2HGDH Monoclonal antibody

Catalog Number: 66364-1-Ig

Basic Information

Catalog Number: 66364-1-Ig	GenBank Accession Number: BC036604	Purification Method: Protein G purification
Size: 1600 µg/ml	GeneID (NCBI): 728294	CloneNo.: 1E9B3
Source: Mouse	UNIPROT ID: Q8N465	Recommended Dilutions: WB 1:1000-1:8000 IHC 1:100-1:400 IF/ICC 1:400-1:1600
Isotype: IgG1	Full Name: D-2-hydroxyglutarate dehydrogenase	
Immunogen Catalog Number: AG5036	Calculated MW: 521 aa, 56 kDa Observed MW: 56 kDa	

Applications

Tested Applications: WB, IHC, IF/ICC, FC (Intra), ELISA	Positive Controls: WB : NIH/3T3 cells, C6 cells, rat heart tissue IHC : human liver cancer tissue, IF/ICC : HepG2 cells,
Species Specificity: human, mouse, rat	
Note-IHC: suggested antigen retrieval with TE buffer pH 9.0; (*) Alternatively, antigen retrieval may be performed with citrate buffer pH 6.0	

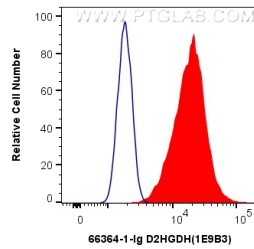
Background Information

D2HGDH(D-2-hydroxyglutarate dehydrogenase, mitochondrial) is also named as D2HGD and belongs to the FAD-binding oxidoreductase/transferase type 4 family. It catalyzes the oxidation of D-2-hydroxyglutarate to alpha-ketoglutarate. Defects in D2HGDH are the cause of D-2-hydroxyglutaric aciduria type 1 (D2HGA1).

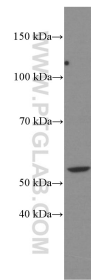
Storage

Storage:
Store at -20°C. Stable for one year after shipment.
Storage Buffer:
PBS with 0.02% sodium azide and 50% glycerol pH 7.3.
Aliquoting is unnecessary for -20°C storage

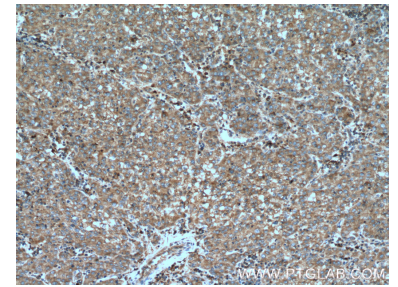
Selected Validation Data



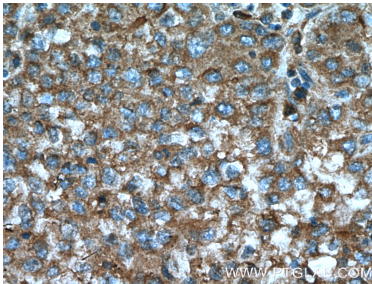
1X10⁶ HepG2 cells were intracellularly stained with 0.4 ug Anti-Human D2HGDH (66364-1-Ig, Clone:1E9B3) and CoraLite®488-Conjugated AffiniPure Goat Anti-Mouse IgG(H+L) at dilution 1:1000 (red), or 0.4 ug Control Antibody. Cells were fixed with 4% PFA and permeabilized with Flow Cytometry Perm Buffer (PF00011-C).



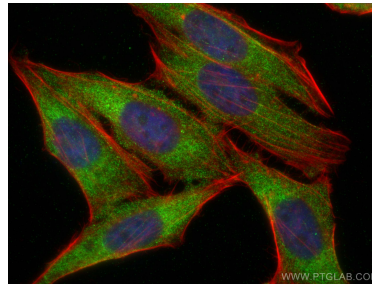
NIH/3T3 cells were subjected to SDS PAGE followed by western blot with 66364-1-Ig (D2HGDH Antibody) at dilution of 1:4000 incubated at room temperature for 1.5 hours.



Immunohistochemical analysis of paraffin-embedded human liver cancer tissue slide using 66364-1-Ig (D2HGDH Antibody) at dilution of 1:200 (under 10x lens). Heat mediated antigen retrieval with Tris-EDTA buffer (pH 9.0).



Immunohistochemical analysis of paraffin-embedded human liver cancer tissue slide using 66364-1-Ig (D2HGDH Antibody) at dilution of 1:200 (under 40x lens). Heat mediated antigen retrieval with Tris-EDTA buffer (pH 9.0).



Immunofluorescent analysis of (4% PFA) fixed HepG2 cells using D2HGDH antibody (66364-1-Ig, Clone: 1E9B3) at dilution of 1:800 and CoraLite®488-Conjugated AffiniPure Goat Anti-Mouse IgG(H+L), CL594-phalloidin (red).