

For Research Use Only

Mouse IgG1 isotype control Monoclonal antibody



Catalog Number: 66360-1-Ig **8 Publications**

Basic Information

Catalog Number:

66360-1-Ig

Size:

1000 μ g/ml

Source:

Mouse

Isotype:

IgG1

GenBank Accession Number:

GeneID (NCBI):

Full Name:

Purification Method:

Protein A purification

CloneNo.:

1F8D3

Recommended Dilutions:

WB 1:500-1:2000

Applications

Tested Applications:

FC, WB, ELISA

Cited Applications:

Cell treatment, CoIP, IHC, IP, RIP, WB

Species Specificity:

Megathura crenulata

Cited Species:

mouse

Positive Controls:

WB : ,

Background Information

This antibody is used as the isotype control of mouse IgG1 (Kappa). It can be used as the isotype control in Flow Cytometry, Immuno-Precipitation and other experiments. The immunogen of this antibody is Keyhole Limpet Hemocyanin (KLH).

Notable Publications

Author	Pubmed ID	Journal	Application
Chujie Ding	35913801	FASEB J	CoIP
Yuting Yang	34242624	Exp Cell Res	IP
Tomohiro Kawasumi	34989246	Am J Rhinol Allergy	IHC

Storage

Storage:

Store at -20°C. Stable for one year after shipment.

Storage Buffer:

PBS with 0.02% sodium azide and 50% glycerol pH 7.3.

Aliquoting is unnecessary for -20°C storage

For technical support and original validation data for this product please contact:

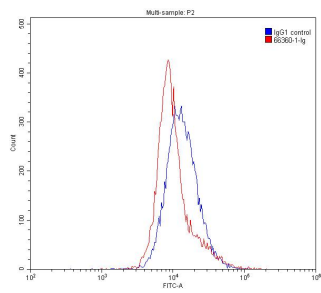
T: 4006900926

E: Proteintech-CN@ptglab.com

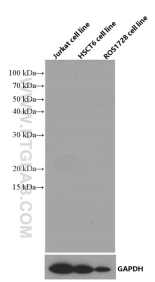
W: ptgcn.com

This product is exclusively available under Proteintech Group brand and is not available to purchase from any other manufacturer.

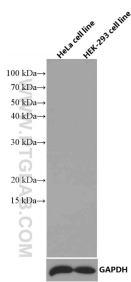
Selected Validation Data



1X10⁶ K-562 cells were stained with 0.20ug Mouse IgG1 isotype control antibody (66360-1-Ig, red) and another control antibody (blue). Fixed with 90% MeOH.



Various lysates were subjected to SDS PAGE followed by western blot with 66360-1-Ig (Mouse IgG1 isotype control antibody) at dilution of 1:1000 incubated at room temperature for 1.5 hours.



Various lysates were subjected to SDS PAGE followed by western blot with 66360-1-Ig (Mouse IgG1 isotype control antibody) at dilution of 1:1000 incubated at room temperature for 1.5 hours.