

POMC Monoclonal antibody, PBS Only

Catalog Number: 66358-1-PBS

Basic Information

Catalog Number:

66358-1-PBS

Size:

1mg/ml

Source:

Mouse

Isotype:

IgG1

Immunogen Catalog Number:

AG17311

GenBank Accession Number:

BC065832

GeneID (NCBI):

5443

UNIPROT ID:

P01189

Full Name:

proopiomelanocortin

Calculated MW:

267 aa, 29 kDa

Observed MW:

35 kDa

Purification Method:

Protein A purification

CloneNo.:

3C12C7

Applications

Tested Applications:

IHC, IF/ICC, ELISA

Species Specificity:

human, mouse, rat, pig

Background Information

Pro-opiomelanocortin (POMC) is a prohormone that encodes multiple smaller peptide hormones within its structure. POMC plays important roles in many pathological and physiological processes, including regulating energy metabolism, immune reactions, and sexual functions. POMC expression differs quantitatively and qualitatively among most normal tissues. The large molecule of POMC is the source of several important biologically active substances. POMC can be cleaved enzymatically into the following peptides: d NPP, γ -MSH, ACTH, α -MSH, CLIP, Lipotropin β , Lipotropin γ , β -MSH, β -endorphin and Met-enkephalin.

Storage

Storage:

Store at -80°C.

The product is shipped with ice packs. Upon receipt, store it immediately at -80°C

Storage Buffer:

PBS Only

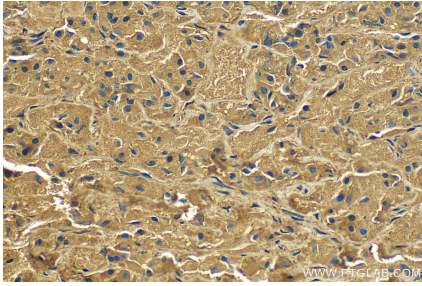
For technical support and original validation data for this product please contact:

T: 4006900926

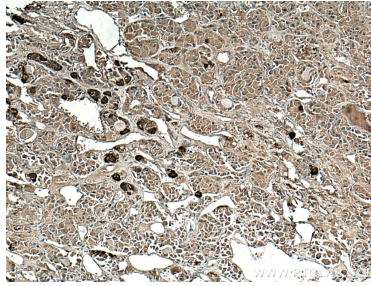
E: Proteintech-CN@ptglab.comW: ptgcn.com

This product is exclusively available under Proteintech Group brand and is not available to purchase from any other manufacturer.

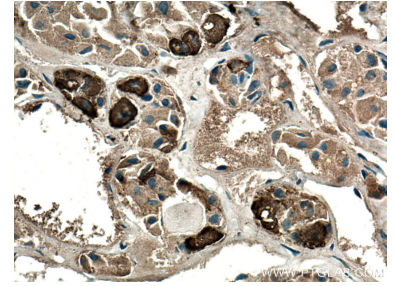
Selected Validation Data



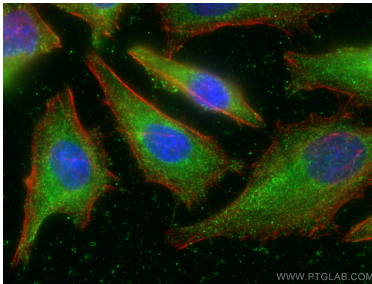
Immunohistochemical analysis of paraffin-embedded human pituitary tissue slide using 66358-1-Ig (POMC antibody) at dilution of 1:2000 (under 40x lens). Heat mediated antigen retrieval with Tris-EDTA buffer (pH 9.0). This data was developed using the same antibody clone with 66358-1-PBS in a different storage buffer formulation.



Immunohistochemical analysis of paraffin-embedded human pituitary tissue slide using 66358-1-Ig (POMC antibody) at dilution of 1:1000 (under 10x lens). Heat mediated antigen retrieval with Tris-EDTA buffer (pH 9.0). This data was developed using the same antibody clone with 66358-1-PBS in a different storage buffer formulation.



Immunohistochemical analysis of paraffin-embedded human pituitary tissue slide using 66358-1-Ig (POMC antibody) at dilution of 1:1000 (under 40x lens). Heat mediated antigen retrieval with Tris-EDTA buffer (pH 9.0). This data was developed using the same antibody clone with 66358-1-PBS in a different storage buffer formulation.



Immunofluorescent analysis of (-20°C Ethanol) fixed HeLa cells using POMC antibody (66358-1-Ig, Clone: 3C12C7) at dilution of 1:400 and CoraLite®488-Conjugated AffiniPure Goat Anti-Mouse IgG(H+L), CL594-Phalloidin (red). This data was developed using the same antibody clone with 66358-1-PBS in a different storage buffer formulation.