

For Research Use Only

CBLB Monoclonal antibody, PBS Only

Catalog Number: 66353-1-PBS



Basic Information

Catalog Number:

66353-1-PBS

Size:

1 mg/ml

Source:

Mouse

Isotype:

IgG3

Immunogen Catalog Number:

AG18757

GenBank Accession Number:

BC032851

GeneID (NCBI):

868

UNIPROT ID:

Q13191

Full Name:

Cas-Br-M (murine) ecotropic retroviral transforming sequence b

Calculated MW:

982 aa, 109 kDa

Observed MW:

110 kDa

Purification Method:

Protein A purification

CloneNo.:

2D3A2

Applications

Tested Applications:

WB, IHC, IF, ELISA

Species Specificity:

human, mouse, pig, rat

Background Information

CBLB(E3 ubiquitin-protein ligase CBL-B) is also known as RNF56 and plays a necessary role to prevent the inappropriate activation of NF- κ B in response to lipopolysaccharide and to polymicrobial sepsis. CBLB can be phosphorylated on tyrosine and serine residues upon TCR or BCR activation, and upon various types of cell stimulation. It also has a crucial role in the prevention of chronic inflammation and autoimmunity. This protein has 3 isoforms produced by alternative splicing.

Storage

Storage:

Store at -80°C.

The product is shipped with ice packs. Upon receipt, store it immediately at -80°C

Storage Buffer:

PBS only

For technical support and original validation data for this product please contact:

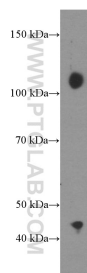
T: 4006900926

E: Proteintech-CN@ptglab.com

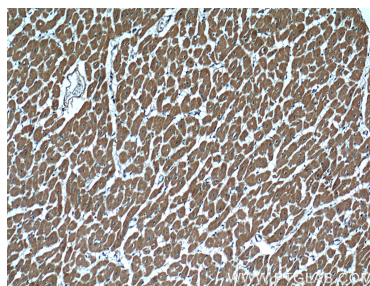
W: ptgcn.com

This product is exclusively available under Proteintech Group brand and is not available to purchase from any other manufacturer.

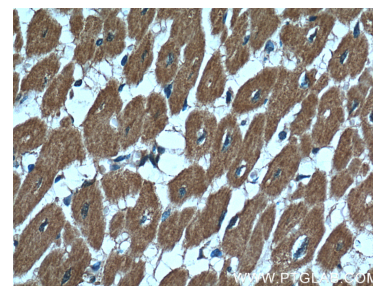
Selected Validation Data



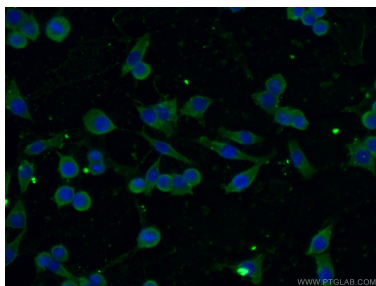
RAW 264.7 cells were subjected to SDS PAGE followed by western blot with 66353-1-Ig (CBLB Antibody) at dilution of 1:1000 incubated at room temperature for 1.5 hours. This data was developed using the same antibody clone with 66353-1-PBS in a different storage buffer formulation.



Immunohistochemical analysis of paraffin-embedded human heart tissue slide using 66353-1-Ig (CBLB Antibody) at dilution of 1:200 (under 10x lens). This data was developed using the same antibody clone with 66353-1-PBS in a different storage buffer formulation.



Immunohistochemical analysis of paraffin-embedded human heart tissue slide using 66353-1-Ig (CBLB Antibody) at dilution of 1:200 (under 40x lens). This data was developed using the same antibody clone with 66353-1-PBS in a different storage buffer formulation.



Immunofluorescent analysis of (-20°C Ethanol) fixed RAW 264.7 cells using 66353-1-Ig(CBLB antibody) at dilution of 1:100 and Alexa Fluor 488-conjugated AffiniPure Goat Anti-Mouse IgG(H+L). This data was developed using the same antibody clone with 66353-1-PBS in a different storage buffer formulation.