

For Research Use Only

CAPRIN1 Monoclonal antibody, PBS Only



Catalog Number: 66352-1-PBS

Basic Information

Catalog Number: 66352-1-PBS	GenBank Accession Number: BC001731	Purification Method: Protein A purification
Size: 1mg/ml	GeneID (NCBI): 4076	CloneNo.: 6B10F11
Source: Mouse	UNIPROT ID: Q14444	
Isotype: IgG1	Full Name: cell cycle associated protein 1	
Immunogen Catalog Number: AG7413	Calculated MW: 78 kDa	
	Observed MW: 116 kDa	

Applications

Tested Applications:
WB, IHC, IF/ICC, Indirect ELISA

Species Specificity:
human, mouse, rat

Background Information

CAPRIN1(Caprin-1) is a cytoplasmic phosphoprotein which may regulate the transport and translation of mRNAs of proteins involved in synaptic plasticity in neurons and cell proliferation and migration in multiple cell types. Its levels, except in the brain, are tightly correlated with cellular proliferation. Suppression of expression of human Caprin-1 resulted in slowing of the proliferation rate, which suggests its essential for normal cellular proliferation.

Storage

Storage:
Store at -80°C.
The product is shipped with ice packs. Upon receipt, store it immediately at -80°C

Storage Buffer:
PBS Only

For technical support and original validation data for this product please contact:

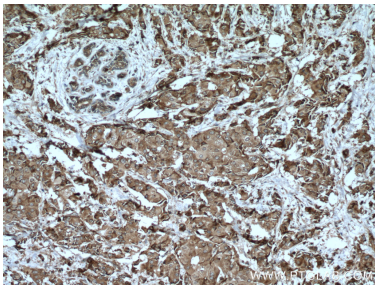
T: 4006900926

E: Proteintech-CN@ptglab.com

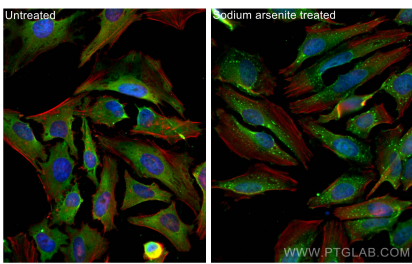
W: ptgcn.com

This product is exclusively available under Proteintech Group brand and is not available to purchase from any other manufacturer.

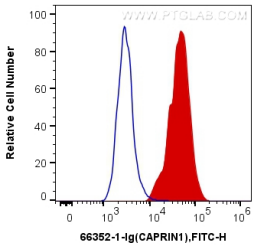
Selected Validation Data



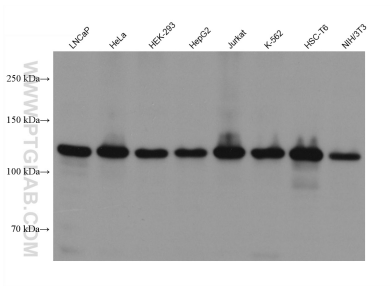
Immunohistochemical analysis of paraffin-embedded human breast cancer tissue slide using 66352-1-Ig (CAPRIN1 antibody) at dilution of 1:1000 (under 10x lens. Heat mediated antigen retrieval with Tris-EDTA buffer (pH 9.0). This data was developed using the same antibody clone with 66352-1-PBS in a different storage buffer formulation.



Immunofluorescent analysis of (4% PFA) fixed sodium arsenite treated HeLa cells using CAPRIN1 antibody (66352-1-Ig, Clone: 6B10F11) at dilution of 1:800 and CoraLite@488-Conjugated AffiniPure Goat Anti-Mouse IgG(H+L), CL594-Phalloidin (red). This data was developed using the same antibody clone with 66352-1-PBS in a different storage buffer formulation.



1X10⁶ NIH/3T3 cells were intracellularly stained with 0.2 ug Anti-Human CAPRIN1 (66352-1-Ig, Clone:6B10F11) (red), or 0.2 ug Control Antibody. Cells were fixed with 4% PFA and permeabilized with Flow Cytometry Perm Buffer (PF00011-C). This data was developed using the same antibody clone with 66352-1-PBS in a different storage buffer formulation.



Various lysates were subjected to SDS PAGE followed by western blot with 66352-1-Ig (CAPRIN1 antibody) at dilution of 1:20000 incubated at room temperature for 1.5 hours. This data was developed using the same antibody clone with 66352-1-PBS in a different storage buffer formulation.