

For Research Use Only

# SIX2 Monoclonal antibody, PBS Only

Catalog Number: 66347-1-PBS



## Basic Information

Catalog Number:

66347-1-PBS

Concentration:

1mg/ml

Source:

Mouse

Isotype:

IgG2b

Immunogen Catalog Number:

AG2124

GenBank Accession Number:

BC024033

GeneID (NCBI):

10736

UNIPROT ID:

Q9NPC8

Full Name:

SIX homeobox 2

Calculated MW:

291 aa, 32 kDa

Observed MW:

37 kDa

Purification Method:

Protein A purification

CloneNo.:

1F9G11

## Applications

Tested Applications:

WB, IHC, IF/ICC, Indirect ELISA

Species Specificity:

human, mouse, rat, pig, canine

## Background Information

The SIX proteins (sine oculis) are a family of homeodomain transcription factors that share a conserved DNA binding domain. Six members (Six1-Six6) of the Six gene family have been identified in mice and humans. SIX2, containing one homeobox DNA-binding domain, is highly expressed in fetal tissues but expression is limited in adult tissues. SIX2 may be involved in limb tendon and ligament development[PMID:21420949]. It has been previously shown that SIX2 is expressed in developing mesenchymal tissue including head and urogenital system at the time of overt midfacial and renal differentiation[PMID: 22282599].

## Storage

Storage:

Store at -80°C.

**The product is shipped with ice packs. Upon receipt, store it immediately at -80°C**

Storage Buffer:

PBS only, pH7.3

For technical support and original validation data for this product please contact:

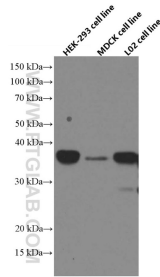
T: 4006900926

E: [Proteintech-CN@ptglab.com](mailto:Proteintech-CN@ptglab.com)

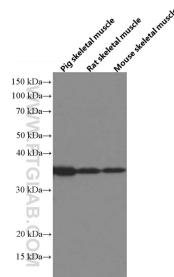
W: [ptgcn.com](http://ptgcn.com)

**This product is exclusively available under Proteintech Group brand and is not available to purchase from any other manufacturer.**

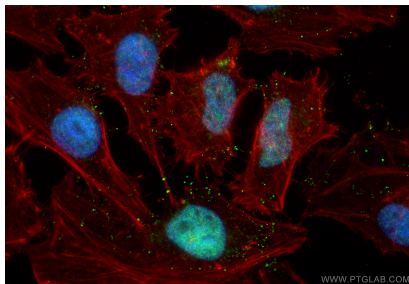
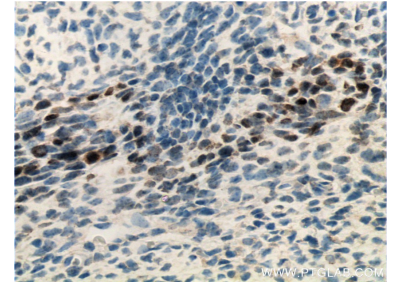
## Selected Validation Data



Various cells were subjected to SDS PAGE followed by western blot with 66347-1-Ig (SIX2 antibody) at dilution of 1:3000 incubated at room temperature for 1.5 hours. This data was developed using the same antibody clone with 66347-1-PBS in a different storage buffer formulation.



Various tissues were subjected to SDS PAGE followed by western blot with 66347-1-Ig (SIX2 antibody) at dilution of 1:3000 incubated at room temperature for 1.5 hours. This data was developed using the same antibody clone with 66347-1-PBS in a different storage buffer formulation.



Immunofluorescent analysis of (4% PFA) fixed HeLa cells using SIX2 antibody (66347-1-Ig, Clone: 1F9G11) at dilution of 1:400 and Coralite® 488-Conjugated Goat Anti-Mouse IgG(H+L) (SA00013-1), CL594-Phalloidin (red). This data was developed using the same antibody clone with 66347-1-PBS in a different storage buffer formulation.