

For Research Use Only

# SIX2 Monoclonal antibody

Catalog Number: 66347-1-Ig **7 Publications**



## Basic Information

Catalog Number: 66347-1-Ig	GenBank Accession Number: BC024033	Purification Method: Protein A purification
Concentration: 1600 ug/ml	GeneID (NCBI): 10736	CloneNo.: 1F9G11
Source: Mouse	UNIPROT ID: Q9NPC8	Recommended Dilutions: WB 1:1000-1:6000 IHC 1:50-1:500 IF/ICC 1:200-1:800
Isotype: IgG2b	Full Name: SIX homeobox 2	
Immunogen Catalog Number: AG2124	Calculated MW: 291 aa, 32 kDa Observed MW: 37 kDa	

## Applications

Tested Applications: WB, IHC, IF/ICC, ELISA	Positive Controls:
Cited Applications: WB, IHC, IF	WB : pig skeletal muscle tissue, HEK-293 cells, MDCK cells, rat skeletal muscle tissue, NCCIT cells, L02 cells, mouse skeletal muscle tissue
Species Specificity: human, mouse, rat, pig, canine	IHC : mouse embryo tissue,
Cited Species: mouse	IF/ICC : HeLa cells,
<b>Note-IHC: suggested antigen retrieval with TE buffer pH 9.0; (*) Alternatively, antigen retrieval may be performed with citrate buffer pH 6.0</b>	

## Background Information

The SIX proteins (sine oculis) are a family of homeodomain transcription factors that share a conserved DNA binding domain. Six members (Six1-Six6) of the Six gene family have been identified in mice and humans. SIX2, containing one homeobox DNA-binding domain, is highly expressed in fetal tissues but expression is limited in adult tissues. SIX2 may be involved in limb tendon and ligament development[PMID:21420949]. It has been previously shown that SIX2 is expressed in developing mesenchymal tissue including head and urogenital system at the time of overt midfacial and renal differentiation[PMID: 22282599].

## Notable Publications

Author	Pubmed ID	Journal	Application
Jun Li	36130284	Nucleic Acids Res	IHC
Wen Shi	36057966	Dev Dyn	IHC
Bliss Magella	29183737	Dev Biol	IHC,IF

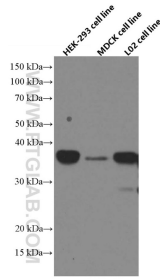
## Storage

Storage:  
Store at -20°C. Stable for one year after shipment.  
Storage Buffer:  
PBS with 0.02% sodium azide and 50% glycerol, pH7.3  
Aliquoting is unnecessary for -20°C storage

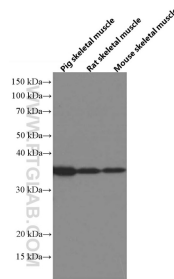
For technical support and original validation data for this product please contact:  
T: 4006900926 E: Proteintech-CN@ptglab.com W: ptgcn.com

This product is exclusively available under Proteintech Group brand and is not available to purchase from any other manufacturer.

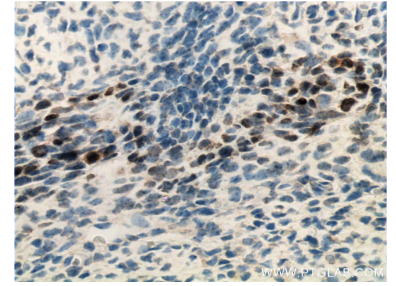
## Selected Validation Data



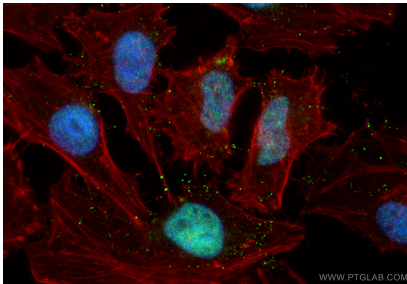
Various cells were subjected to SDS PAGE followed by western blot with 66347-1-Ig (SIX2 antibody) at dilution of 1:3000 incubated at room temperature for 1.5 hours.



Various tissues were subjected to SDS PAGE followed by western blot with 66347-1-Ig (SIX2 antibody) at dilution of 1:3000 incubated at room temperature for 1.5 hours.



Immunohistochemical analysis of paraffin-embedded mouse embryo tissue slide using 66347-1-Ig (SIX2 antibody) at dilution of 1:200 (under 40x lens). Heat mediated antigen retrieval with Tris-EDTA buffer (pH 9.0).



Immunofluorescent analysis of (4% PFA) fixed HeLa cells using SIX2 antibody (66347-1-Ig, Clone: 1F9G11) at dilution of 1:400 and Coralite® 488-Conjugated Goat Anti-Mouse IgG(H+L) (SA00013-1), CL594-Phalloidin (red).