

For Research Use Only

Annexin A1 Monoclonal antibody, PBS Only (Detector)

Catalog Number: 66344-1-PBS

Featured Product



Basic Information

Catalog Number:

66344-1-PBS

Size:

1mg/ml

Source:

Mouse

Isotype:

IgG1

Immunogen Catalog Number:

AG17273

GenBank Accession Number:

BC001275

GeneID (NCBI):

301

UNIPROT ID:

P04083

Full Name:

annexin A1

Calculated MW:

346 aa, 39 kDa

Observed MW:

35 kDa

Purification Method:

Protein A purification

CloneNo.:

1E1B7

Applications

Tested Applications:

WB, IHC, IF/ICC, FC (Intra), Cytometric bead array, Indirect ELISA

Species Specificity:

human, mouse, rat

Background Information

ANXA1, also named as ANX1, LPC1 and p35, belongs to the annexin family. It is a member of the annexin family of Ca^{2+} -binding and phospholipidbinding proteins, and it is particularly abundant in various populations of peripheral blood leukocytes. ANXA1 regulates phospholipase A2 activity. It seems to bind from two to four calcium ions with high affinity. ANXA1 is a pleiotrophic protein produced by many cell types including peripheral blood leucocytes.

Storage

Storage:

Store at $-80^{\circ}C$.

The product is shipped with ice packs. Upon receipt, store it immediately at $-80^{\circ}C$

Storage Buffer:

PBS Only

For technical support and original validation data for this product please contact:

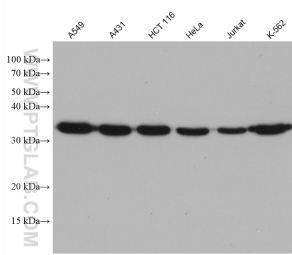
T: 4006900926

E: Proteintech-CN@ptglab.com

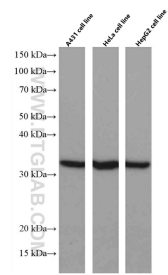
W: ptgcn.com

This product is exclusively available under Proteintech Group brand and is not available to purchase from any other manufacturer.

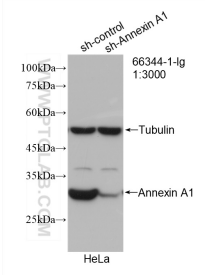
Selected Validation Data



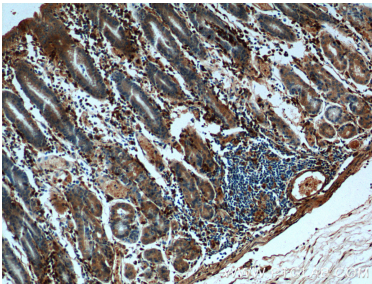
Various lysates were subjected to SDS PAGE followed by western blot with 66344-1-Ig (Annexin A1 antibody) at dilution of 1:20000 incubated at room temperature for 1.5 hours. This data was developed using the same antibody clone with 66344-1-PBS in a different storage buffer formulation.



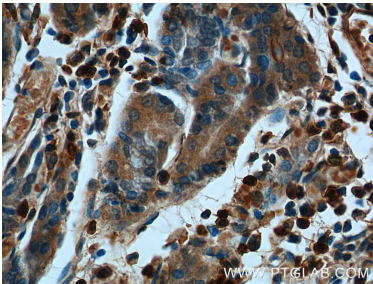
Various lysates were subjected to SDS PAGE followed by western blot with 66344-1-Ig (Annexin A1 antibody) at dilution of 1:5000 incubated at room temperature for 1.5 hours. This data was developed using the same antibody clone with 66344-1-PBS in a different storage buffer formulation.



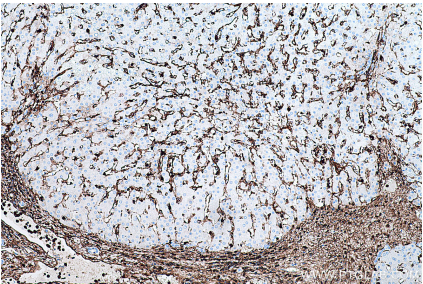
WB result of Annexin A1 antibody (66344-1-Ig; 1:3000; incubated at room temperature for 1.5 hours) with sh-Control and sh-Annexin A1 transfected HeLa cells. This data was developed using the same antibody clone with 66344-1-PBS in a different storage buffer formulation.



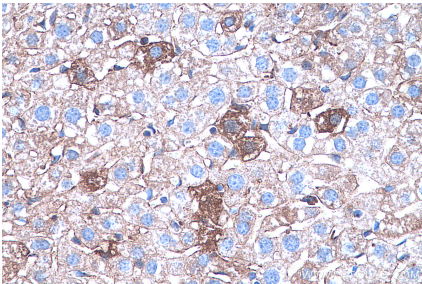
Immunohistochemical analysis of paraffin-embedded human stomach tissue slide using 66344-1-Ig (Annexin A1 antibody at dilution of 1:200 (under 10x lens). This data was developed using the same antibody clone with 66344-1-PBS in a different storage buffer formulation.



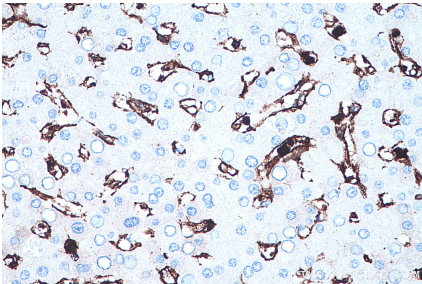
Immunohistochemical analysis of paraffin-embedded human stomach tissue slide using 66344-1-Ig (Annexin A1 antibody at dilution of 1:200 (under 40x lens). This data was developed using the same antibody clone with 66344-1-PBS in a different storage buffer formulation.



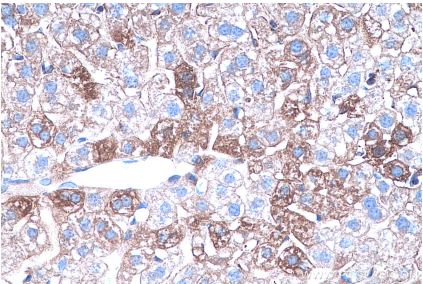
Immunohistochemical analysis of paraffin-embedded human liver tissue slide using 66344-1-Ig (Annexin A1 antibody) at dilution of 1:16000 (under 10x lens). Heat mediated antigen retrieval with Tris-EDTA buffer (pH 9.0). This data was developed using the same antibody clone with 66344-1-PBS in a different storage buffer formulation.



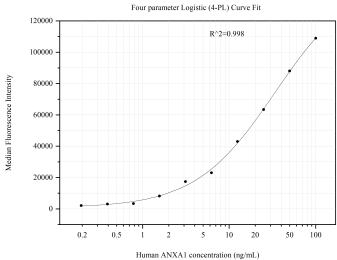
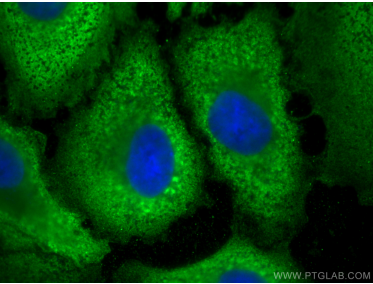
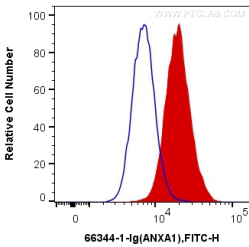
Immunohistochemical analysis of paraffin-embedded mouse liver tissue slide using 66344-1-Ig (Annexin A1 antibody) at dilution of 1:16000 (under 40x lens). Heat mediated antigen retrieval with Tris-EDTA buffer (pH 9.0). This data was developed using the same antibody clone with 66344-1-PBS in a different storage buffer formulation.



Immunohistochemical analysis of paraffin-embedded human liver tissue slide using 66344-1-Ig (Annexin A1 antibody) at dilution of 1:16000 (under 40x lens). Heat mediated antigen retrieval with Tris-EDTA buffer (pH 9.0). This data was developed using the same antibody clone with 66344-1-PBS in a different storage buffer formulation.



Immunohistochemical analysis of paraffin-embedded mouse liver tissue slide using 66344-1-Ig (Annexin A1 antibody) at dilution of 1:16000 (under 40x lens). Heat mediated antigen retrieval with Tris-EDTA buffer (pH 9.0). This data was developed using the same antibody clone with 66344-1-PBS in a different storage buffer formulation.



1X10⁶ K-562 cells were intracellularly stained with 0.8 ug Anti-Human Annexin A1 (66344-1-Ig, Clone:1E1B7) and CoraLite®488-Conjugated AffiniPure Goat Anti-Mouse IgG(H+L) at dilution 1:1000 (red), or 0.8 ug Mouse IgG1 Isotype Control (66360-1-Ig, Clone: T1F8D3F10) (blue). Cells were fixed with 4% PFA and permeabilized with Flow Cytometry Perm Buffer (PF00011-C). This data was developed using the same antibody clone with 66344-1-PBS in a different storage buffer



Immunofluorescent analysis of (-20°C Methanol) fixed A549 cells using Annexin A1 antibody (66344-1-Ig, Clone: 1E1B7) at dilution of 1:800 and Multi-rAb CoraLite ® Plus 488-Goat Anti-Mouse Recombinant Secondary Antibody (H+L) (RGAM002). This data was developed using the same antibody clone with 66344-1-PBS in a different storage buffer formulation.

Cytometric bead array standard curve of MP51130-1, ANXA1 Monoclonal Matched Antibody Pair, PBS Only. Capture antibody: 66344-2-PBS. Detection antibody: 66344-1-PBS. Standard:Ag17273. Range: 0.195-100 ng/mL