

For Research Use Only

# CLIC4 Monoclonal antibody, PBS Only

Catalog Number: 66343-1-PBS

Featured Product



## Basic Information

Catalog Number:

66343-1-PBS

Size:

1mg/ml

Source:

Mouse

Isotype:

IgG1

Immunogen Catalog Number:

AG2942

GenBank Accession Number:

BC012444

GeneID (NCBI):

25932

UNIPROT ID:

Q9Y696

Full Name:

chloride intracellular channel 4

Calculated MW:

253 aa, 29 kDa

Observed MW:

29 kDa

Purification Method:

Protein G purification

CloneNo.:

1B7F9

## Applications

Tested Applications:

WB, IHC, IF/ICC, FC (Intra), Indirect ELISA

Species Specificity:

human, rat, pig

## Background Information

Chloride channels are a diverse group of proteins that regulate fundamental cellular processes including stabilization of cell membrane potential, transepithelial transport, maintenance of intracellular pH, and regulation of cell volume. CLIC4 is a p53- and tumor necrosis factor alpha-regulated cytoplasmic and mitochondrial protein that belongs to the CLIC family of intracellular chloride channels. CLICs have actions distinct from traditional cell membrane chloride channels, including formation of ion channels in intracellular organelles and roles in membrane trafficking, apoptosis, and cell differentiation.

## Storage

Storage:

Store at -80°C.

The product is shipped with ice packs. Upon receipt, store it immediately at -80°C

Storage Buffer:

PBS Only

For technical support and original validation data for this product please contact:

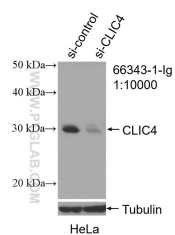
T: 4006900926

E: [Proteintech-CN@ptglab.com](mailto:Proteintech-CN@ptglab.com)

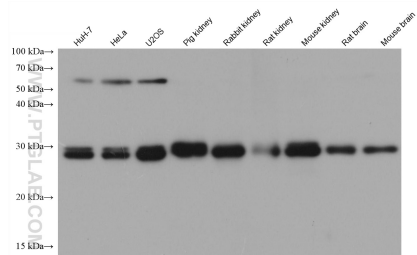
W: [ptgcn.com](http://ptgcn.com)

This product is exclusively available under Proteintech Group brand and is not available to purchase from any other manufacturer.

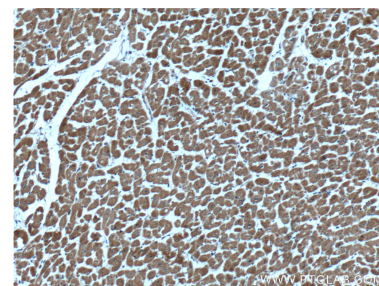
## Selected Validation Data



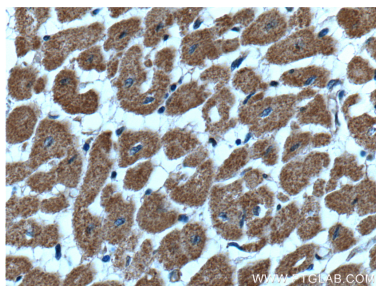
WB result of CLIC4 antibody (66343-1-Ig; 1:10000; incubated at room temperature for 1.5 hours) with sh-Control and sh-CLIC4 transfected HeLa cells. This data was developed using the same antibody clone with 66343-1-PBS in a different storage buffer formulation.



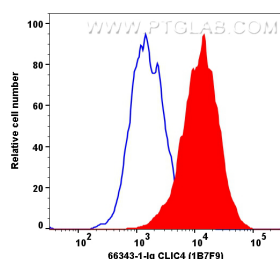
Various lysates were subjected to SDS PAGE followed by western blot with 66343-1-Ig (CLIC4 antibody) at dilution of 1:20000 incubated at room temperature for 1.5 hours. This data was developed using the same antibody clone with 66343-1-PBS in a different storage buffer formulation.



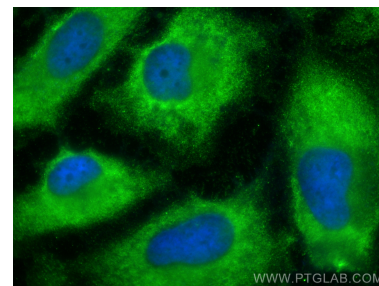
Immunohistochemical analysis of paraffin-embedded human heart tissue slide using 66343-1-Ig (CLIC4 Antibody) at dilution of 1:200 (under 10x lens). This data was developed using the same antibody clone with 66343-1-PBS in a different storage buffer formulation.



Immunohistochemical analysis of paraffin-embedded human heart tissue slide using 66343-1-Ig (CLIC4 Antibody) at dilution of 1:200 (under 40x lens). This data was developed using the same antibody clone with 66343-1-PBS in a different storage buffer formulation.



1x10<sup>6</sup> BT-549 cells were intracellularly stained with 0.2  $\mu$ g CLIC4 Monoclonal antibody (66343-1-Ig, Clone: 1B7F9) and CoraLite® Plus 647-Goat Anti-Mouse Recombinant Secondary Antibody (H+L) (Cat.NO.RGAM005). Mouse IgG1 isotype control (66360-1-Ig, Clone: 1F8D3, blue) was parallel stained as control. Cells were fixed with 4% PFA. This data was developed using the same antibody clone with 66343-1-PBS in a different storage buffer formulation.



Immunofluorescent analysis of (-20°C Ethanol) fixed HeLa cells using CLIC4 antibody (66343-1-Ig, Clone: 1B7F9) at dilution of 1:2000 and CoraLite® 488-Conjugated Goat Anti-Mouse IgG(H+L) (SA00013-1). This data was developed using the same antibody clone with 66343-1-PBS in a different storage buffer formulation.