

For Research Use Only

RAB5A Monoclonal antibody

Catalog Number: 66339-1-Ig **7 Publications**



Basic Information

Catalog Number: 66339-1-Ig	GenBank Accession Number: BC001267	Purification Method: Protein A purification
Size: 2000 µg/ml	GeneID (NCBI): 5868	CloneNo.: 1B6A5
Source: Mouse	UNIPROT ID: P20339	Recommended Dilutions: WB 1:1000-1:8000 IHC 1:50-1:500 IF/ICC 1:400-1:1600
Isotype: IgG2b	Full Name: RAB5A, member RAS oncogene family	
Immunogen Catalog Number: AG16781	Calculated MW: 215 aa, 24 kDa	
	Observed MW: 24 kDa	

Applications

Tested Applications: WB, IHC, IF/ICC, ELISA	Positive Controls:
Cited Applications: WB, IHC, IF	WB : HEK-293 cells, fetal human brain tissue, pig brain tissue
Species Specificity: human, pig	IHC : human liver cancer tissue, human pancreas tissue
Cited Species: human, mouse, monkey	IF/ICC : HepG2 cells, HeLa cells
Note-IHC: suggested antigen retrieval with TE buffer pH 9.0; (*) Alternatively, antigen retrieval may be performed with citrate buffer pH 6.0	

Background Information

Rab5a belongs to the Rab GTPases family proteins, which play roles in endocytosis, exocytosis, and vesicular transportation. Rab family proteins were recently reported to play important roles in human cancer progression. Rab5a was reported to be overexpressed in breast and ovarian cancers and associated with proliferation and invasion.

Notable Publications

Author	Pubmed ID	Journal	Application
Kun Meng	32504010	Commun Biol	
Jin Wang	35386458	Bioact Mater	IF
Yoel Benarroch	33541739	Clin Ther	IF

Storage

Storage:
Store at -20°C. Stable for one year after shipment.
Storage Buffer:
PBS with 0.02% sodium azide and 50% glycerol pH 7.3.
Aliquoting is unnecessary for -20°C storage

For technical support and original validation data for this product please contact:

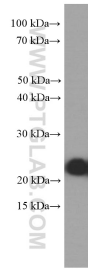
T: 4006900926

E: Proteintech-CN@ptglab.com

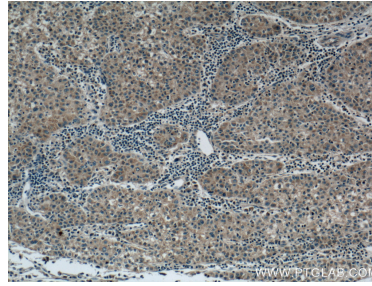
W: ptgcn.com

This product is exclusively available under Proteintech Group brand and is not available to purchase from any other manufacturer.

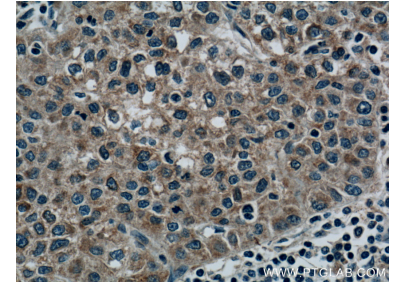
Selected Validation Data



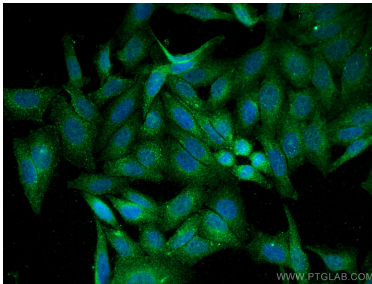
HEK-293 cells were subjected to SDS PAGE followed by western blot with 66339-1-Ig (RAB5A Antibody) at dilution of 1:4000 incubated at room temperature for 1.5 hours.



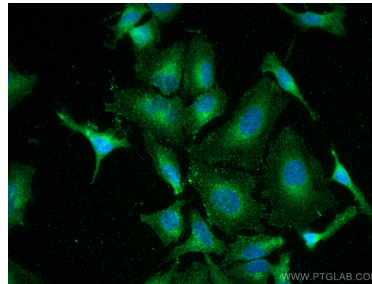
Immunohistochemical analysis of paraffin-embedded human liver cancer tissue slide using 66339-1-Ig (RAB5A Antibody) at dilution of 1:200 (under 10x lens). Heat mediated antigen retrieval with Tris-EDTA buffer (pH 9.0).



Immunohistochemical analysis of paraffin-embedded human liver cancer tissue slide using 66339-1-Ig (RAB5A Antibody) at dilution of 1:200 (under 40x lens). Heat mediated antigen retrieval with Tris-EDTA buffer (pH 9.0).



Immunofluorescent analysis of (4% PFA) fixed HepG2 cells using RAB5A antibody (66339-1-Ig, Clone: 1B6A5) at dilution of 1:800 and Coralite®488-Conjugated Goat Anti-Mouse IgG(H+L).



Immunofluorescent analysis of (4% PFA) fixed HeLa cells using RAB5A antibody (66339-1-Ig, Clone: 1B6A5) at dilution of 1:800 and Coralite®488-Conjugated Goat Anti-Mouse IgG(H+L).