

NUDT21 Monoclonal antibody

Catalog Number: 66335-1-Ig

Featured Product

6 Publications

Basic Information

Catalog Number:

66335-1-Ig

Size:

1000 ug/ml

Source:

Mouse

Isotype:

IgG1

Immunogen Catalog Number:

AG12260

GenBank Accession Number:

BC001403

GeneID (NCBI):

11051

UNIPROT ID:

O43809

Full Name:

nudix (nucleoside diphosphate linked moiety X)-type motif 21

Calculated MW:

26 kDa

Observed MW:

27 kDa

Purification Method:

Protein G purification

CloneNo.:

1C4C8

Recommended Dilutions:

WB 1:1000-1:6000

IHC 1:500-1:2000

IF/ICC 1:1000-1:4000

Applications

Tested Applications:

WB, IHC, IF/ICC, ELISA

Cited Applications:

WB, IF, IP, RIP

Species Specificity:

human, mouse

Cited Species:

human

Note-IHC: suggested antigen retrieval with TE buffer pH 9.0; (*) Alternatively, antigen retrieval may be performed with citrate buffer pH 6.0

Positive Controls:

WB : NIH/3T3 cells, HEK-293 cells, HeLa cells, MCF-7 cells

IHC : human brain tissue, mouse brain tissue, mouse liver tissue

IF/ICC : HeLa cells, HepG2 cells

Background Information

Cleavage and polyadenylation specific factor 5, 25 kDa (CPSF5, synonym: CFIM25) is one subunit of a cleavage factor required for 3' RNA cleavage and polyadenylation processing. The interaction of CPSF5 with the RNA is one of the earliest steps in the assembly of the 3' end processing complex and facilitates the recruitment of other processing factors.

Notable Publications

Author	Pubmed ID	Journal	Application
Zhijie Hu	36073763	J Mol Cell Biol	WB
Seung Wook Yang	31980388	Mol Cell	IP
Jannis Renzelmann	39278537	Microvasc Res	WB

Storage

Storage:

Store at -20°C. Stable for one year after shipment.

Storage Buffer:

PBS with 0.02% sodium azide and 50% glycerol pH 7.3.

Aliquoting is unnecessary for -20°C storage

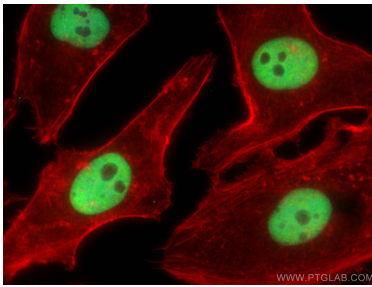
For technical support and original validation data for this product please contact:

T: 4006900926

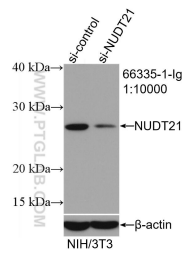
E: Proteintech-CN@ptglab.comW: ptgcn.com

This product is exclusively available under Proteintech Group brand and is not available to purchase from any other manufacturer.

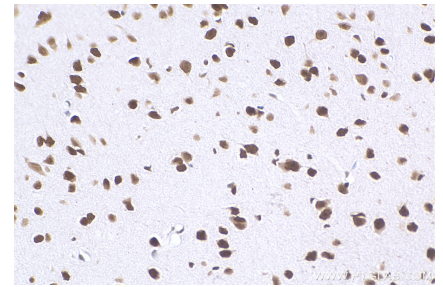
Selected Validation Data



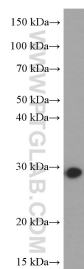
Immunofluorescent analysis of (4% PFA) fixed HeLa cells using NUDT21 antibody (66335-1-Ig, Clone: 1C4C8) at dilution of 1:2000 and CoraLite®488-Conjugated Goat Anti-Mouse IgG(H+L), CL594-phalloidin (red).



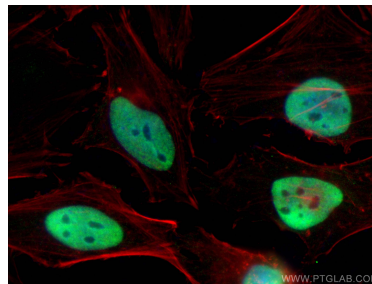
WB result of NUDT21 antibody (66335-1-Ig; 1:10000; incubated at room temperature for 1.5 hours) with sh-Control and sh-NUDT21 transfected NIH/3T3 cells.



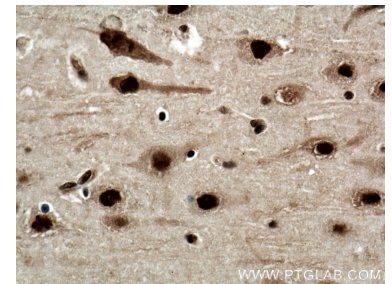
Immunohistochemical analysis of paraffin-embedded mouse brain tissue slide using 66335-1-Ig (NUDT21 antibody) at dilution of 1:1000 (under 40x lens). Heat mediated antigen retrieval with Tris-EDTA buffer (pH 9.0).



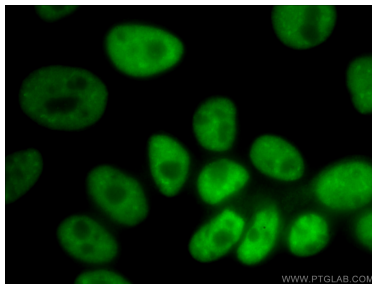
NIH/3T3 cells were subjected to SDS PAGE followed by western blot with 66335-1-Ig (NUDT21 antibody) at dilution of 1:3000 incubated at room temperature for 1.5 hours.



Immunofluorescent analysis of (4% PFA) fixed HeLa cells using NUDT21 antibody (66335-1-Ig, Clone: 1C4C8) at dilution of 1:800 and CoraLite®488-Conjugated Goat Anti-Mouse IgG(H+L), CL594-phalloidin (red).



Immunohistochemical analysis of paraffin-embedded human brain tissue slide using 66335-1-Ig (NUDT21 antibody) at dilution of 1:1000 (under 40x lens). Heat mediated antigen retrieval with Tris-EDTA buffer (pH 9.0).



Immunofluorescent analysis of (10% Formaldehyde) fixed HepG2 cells using 66335-1-Ig (NUDT21 antibody) at dilution of 1:400 and Alexa Fluor 488-conjugated Goat Anti-Mouse IgG(H+L).