

SRD5A1 Monoclonal antibody

Catalog Number: 66329-1-Ig

Featured Product

6 Publications

Basic Information

Catalog Number:

66329-1-Ig

Size:

1200 µg/ml

Source:

Mouse

Isotype:

IgG1

Immunogen Catalog Number:

AG23351

GenBank Accession Number:

BC007033

GeneID (NCBI):

6715

UNIPROT ID:

P18405

Full Name:

steroid-5-alpha-reductase, alpha polypeptide 1 (3-oxo-5 alpha-steroid delta 4-dehydrogenase alpha 1)

Observed MW:

32 kDa

Purification Method:

Protein G purification

CloneNo.:

1D5D8

Recommended Dilutions:

WB 1:500-1:2000

IHC 1:50-1:500

IF/ICC 1:50-1:500

Applications

Tested Applications:

IF/ICC, IHC, WB, ELISA

Cited Applications:

WB, IHC

Species Specificity:

human

Cited Species:

human, mouse

Note-IHC: suggested antigen retrieval with TE buffer pH 9.0; (*) Alternatively, antigen retrieval may be performed with citrate buffer pH 6.0

Positive Controls:

WB : human testis tissue,

IHC : human liver tissue,

IF/ICC : HeLa cells, HEPG2 cells

Background Information

Steroid 5-alpha-reductase (SRD5A1) is a minor component of the reductase activity in prostate although the gene was originally cloned from prostate. On the other hand, SRD5A1 appears to be the predominant isozyme of steroid 5-alpha-reductase in the scalp and elsewhere in the skin.

Notable Publications

Author	Pubmed ID	Journal	Application
Renjie Dou	33627630	Cell Death Dis	WB
Hisamitsu Ide	29369461	Cancer Sci	WB
Akinori Nakayama	33910821	In Vivo	WB

Storage

Storage:

Store at -20°C. Stable for one year after shipment.

Storage Buffer:

PBS with 0.02% sodium azide and 50% glycerol pH 7.3.

Aliquoting is unnecessary for -20°C storage

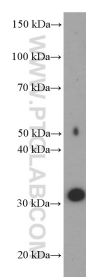
For technical support and original validation data for this product please contact:

T: 4006900926

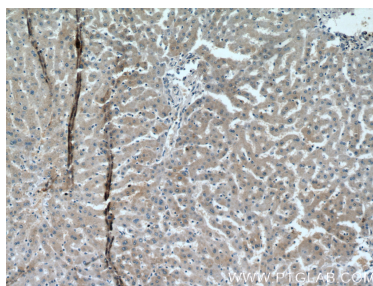
E: Proteintech-CN@ptglab.comW: ptgcn.com

This product is exclusively available under Proteintech Group brand and is not available to purchase from any other manufacturer.

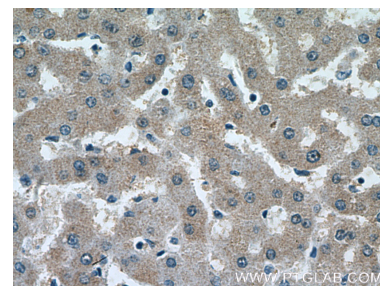
Selected Validation Data



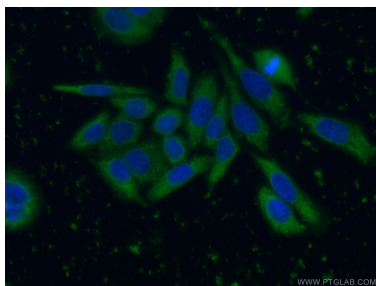
human testis tissue were subjected to SDS PAGE followed by western blot with 66329-1-Ig (SRD5A1 Antibody) at dilution of 1:1000 incubated at room temperature for 1.5 hours.



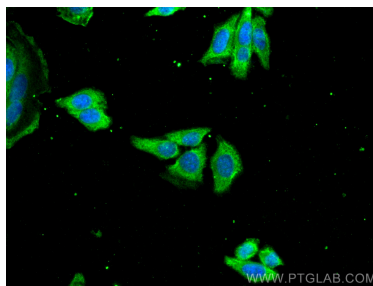
Immunohistochemical analysis of paraffin-embedded human liver tissue slide using 66329-1-Ig (SRD5A1 Antibody) at dilution of 1:200 (under 10x lens).



Immunohistochemical analysis of paraffin-embedded human liver tissue slide using 66329-1-Ig (SRD5A1 Antibody) at dilution of 1:200 (under 40x lens).



Immunofluorescent analysis of (-20°C Ethanol) fixed HeLa cells using 66329-1-Ig(SRD5A1 antibody) at dilution of 1:100 and Alexa Fluor 488-conjugated AffiniPure Goat Anti-Mouse IgG(H+L).



Immunofluorescent analysis of (-20°C Methanol) fixed HEPG2 cells using SRD5A1 antibody (66329-1-Ig, Clone: 1D5D8) at dilution of 1:800 and CoraLite®488-Conjugated AffiniPure Goat Anti-Mouse IgG(H+L).