

# SFRP2 Monoclonal antibody, PBS Only

Catalog Number: 66328-1-PBS

## Basic Information

<b>Catalog Number:</b> 66328-1-PBS	<b>GenBank Accession Number:</b> BC008666	<b>Purification Method:</b> Protein A purification
<b>Size:</b> 1 mg/ml	<b>GeneID (NCBI):</b> 6423	<b>CloneNo.:</b> 1F3A1
<b>Source:</b> Mouse	<b>UNIPROT ID:</b> Q96HF1	
<b>Isotype:</b> IgG1	<b>Full Name:</b> secreted frizzled-related protein 2	
<b>Immunogen Catalog Number:</b> AG18840	<b>Calculated MW:</b> 295 aa, 34 kDa	
	<b>Observed MW:</b> 38 kDa	

## Applications

**Tested Applications:**  
WB, Indirect ELISA, IHC, IF

**Species Specificity:**  
human, rat, pig, rabbit, mouse

## Background Information

Secreted frizzled-related protein 2 (Sfrp2) is a secreted glycoprotein molecule containing an N terminal cysteine-rich domain, which is typically 30-50% identical to the putative Wnt-binding site of the frizzled receptor, and a C terminal heparin-binding domain with weak homology to netrins. It has been implicated in diverse cellular processes, including embryogenesis, regulation of cell apoptosis, and cell differentiation. Methylation of this gene is a potential marker for the presence of colorectal cancer.

## Storage

**Storage:**  
Store at -80°C.

**The product is shipped with ice packs. Upon receipt, store it immediately at -80°C**

**Storage Buffer:**  
PBS Only

For technical support and original validation data for this product please contact:

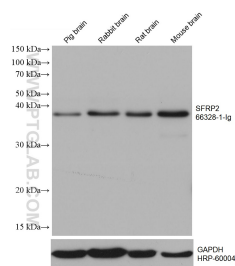
T: 4006900926

E: [Proteintech-CN@ptglab.com](mailto:Proteintech-CN@ptglab.com)

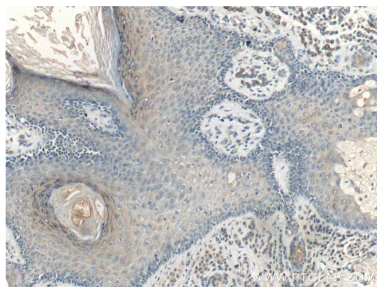
W: [ptgcn.com](http://ptgcn.com)

**This product is exclusively available under Proteintech Group brand and is not available to purchase from any other manufacturer.**

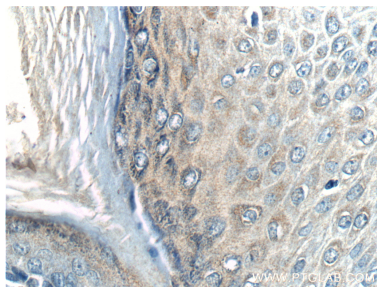
## Selected Validation Data



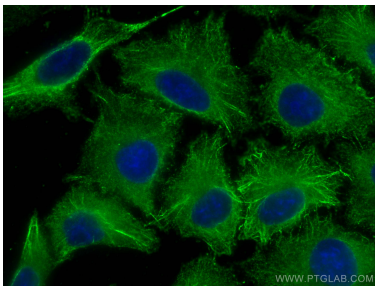
Various lysates were subjected to SDS PAGE followed by western blot with 66328-1-Ig (SFRP2 antibody) at dilution of 1:3000 incubated at room temperature for 1.5 hours. The membrane was stripped and reblotted with HRP-conjugated GAPDH Monoclonal antibody (HRP-60004) as loading control. This data was developed using the same antibody clone with 66328-1-PBS in a different storage buffer formulation.



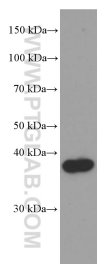
Immunohistochemical analysis of paraffin-embedded human malignant melanoma tissue slide using 66328-1-Ig (SFRP2 Antibody) at dilution of 1:200 (under 10x lens). This data was developed using the same antibody clone with 66328-1-PBS in a different storage buffer formulation.



Immunohistochemical analysis of paraffin-embedded human malignant melanoma tissue slide using 66328-1-Ig (SFRP2 Antibody) at dilution of 1:200 (under 40x lens). This data was developed using the same antibody clone with 66328-1-PBS in a different storage buffer formulation.



Immunofluorescent analysis of (-20°C Methanol) fixed A549 cells using SFRP2 antibody (66328-1-Ig, Clone: 1F3A1) at dilution of 1:1500 and CoraLite®488-Conjugated AffiniPure Goat Anti-Mouse IgG(H+L). This data was developed using the same antibody clone with 66328-1-PBS in a different storage buffer formulation.



rat brain tissue were subjected to SDS PAGE followed by western blot with 66328-1-Ig (SFRP2 Antibody) at dilution of 1:2000 incubated at room temperature for 1.5 hours. This data was developed using the same antibody clone with 66328-1-PBS in a different storage buffer formulation.