

For Research Use Only

VPS37A Monoclonal antibody

Catalog Number: 66327-1-Ig **1 Publications**



Basic Information

Catalog Number: 66327-1-Ig	GenBank Accession Number: BC022363	Purification Method: Protein G purification
Size: 1700 µg/ml	GeneID (NCBI): 137492	CloneNo.: 1F9A4
Source: Mouse	UNIPROT ID: Q8NEZ2	Recommended Dilutions: WB 1:1000-1:4000 IHC 1:50-1:500 IF 1:50-1:500
Isotype: IgG1	Full Name: vacuolar protein sorting 37 homolog A (S. cerevisiae)	
Immunogen Catalog Number: AG19108	Calculated MW: 44 kDa	
	Observed MW: 44 kDa	

Applications

Tested Applications: IF/ICC, IHC, WB, ELISA	Positive Controls: WB : SW 1990 cells, MCF-7 cells
Cited Applications: IHC	IHC : human kidney tissue, human ovary tumor tissue
Species Specificity: human	IF : MCF-7 cells,
Cited Species: human	
Note-IHC: suggested antigen retrieval with TE buffer pH 9.0; (*) Alternatively, antigen retrieval may be performed with citrate buffer pH 6.0	

Background Information

VPS37A, also named as HCRP1, belongs to the VPS37 family. It is a regulator of vesicular trafficking process. VPS37A is a member of the endosomal sorting complex required for transport (ESCRT) system, in upper motor neuron disease. ESCRT has been shown to play a central role in intracellular trafficking, in the maturation of multivesicular bodies and the sorting of ubiquitinated membrane proteins into internal luminal vesicles.

Notable Publications

Author	Pubmed ID	Journal	Application
Qinghua Huang	36465646	Front Endocrinol (Lausanne)	IHC

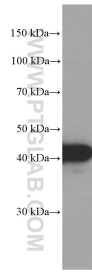
Storage

Storage:
Store at -20°C. Stable for one year after shipment.
Storage Buffer:
PBS with 0.02% sodium azide and 50% glycerol pH 7.3.
Aliquoting is unnecessary for -20°C storage

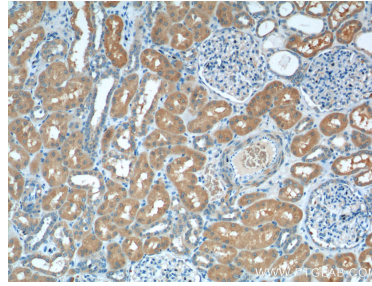
For technical support and original validation data for this product please contact:
T: 4006900926 E: Proteintech-CN@ptglab.com W: ptgcn.com

This product is exclusively available under Proteintech Group brand and is not available to purchase from any other manufacturer.

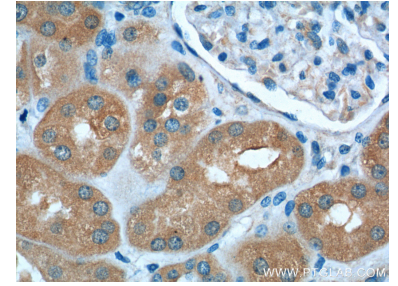
Selected Validation Data



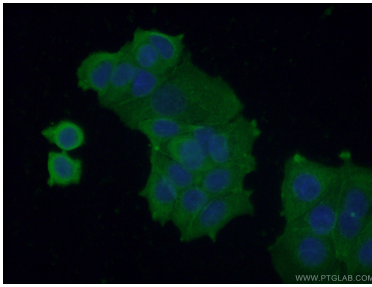
SW 1990 cells were subjected to SDS PAGE followed by western blot with 66327-1-Ig (VPS37A Antibody) at dilution of 1:2000 incubated at room temperature for 1.5 hours.



Immunohistochemical analysis of paraffin-embedded human kidney tissue slide using 66327-1-Ig (VPS37A Antibody) at dilution of 1:200 (under 10x lens).



Immunohistochemical analysis of paraffin-embedded human kidney tissue slide using 66327-1-Ig (VPS37A Antibody) at dilution of 1:200 (under 40x lens).



Immunofluorescent analysis of (-20°C Ethanol) fixed MCF-7 cells using 66327-1-Ig (VPS37A antibody) at dilution of 1:100 and Alexa Fluor 488-conjugated AffiniPure Goat Anti-Mouse IgG(H+L).