

For Research Use Only

Glutamine Synthetase Monoclonal antibody, PBS Only (Capture)

Catalog Number: 66323-2-PBS

Featured Product



Basic Information

Catalog Number:

66323-2-PBS

Concentration:

4137 ug/ml

Source:

Mouse

Isotype:

IgG1

Immunogen Catalog Number:

AG6309

GenBank Accession Number:

BC011700

GeneID (NCBI):

2752

UNIPROT ID:

P15104

Full Name:

glutamate-ammonia ligase
(glutamine synthetase)

Calculated MW:

374 aa, 42 kDa

Observed MW:

42 kDa

Purification Method:

Protein A purification

CloneNo.:

1B6G4

Applications

Tested Applications:

WB, IHC, IF-P, IF-Fro, FC (Intra), Cytometric bead array,
Indirect ELISA

Species Specificity:

human, mouse, rat

Background Information

Storage

Storage:

Store at -80°C.

The product is shipped with ice packs. Upon receipt, store it immediately at -80°C

Storage Buffer:

PBS only, pH7.3

For technical support and original validation data for this product please contact:

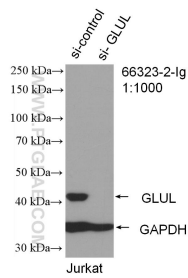
T: 4006900926

E: Proteintech-CN@ptglab.com

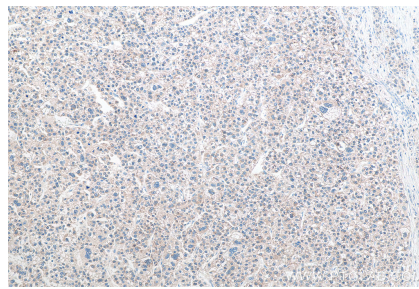
W: ptgcn.com

This product is exclusively available under Proteintech Group brand and is not available to purchase from any other manufacturer.

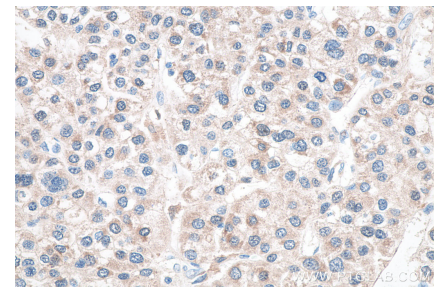
Selected Validation Data



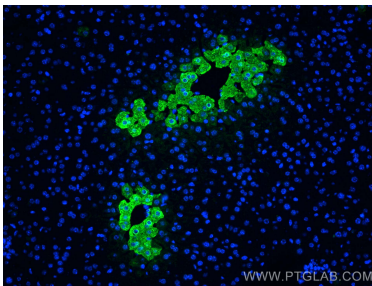
WB result of Glutamine synthetase antibody (66323-2-Ig; 1:1000; incubated at room temperature for 1.5 hours) with sh-Control and sh-Glutamine synthetase transfected Jurkat cells. This data was developed using the same antibody clone with 66323-2-PBS in a different storage buffer formulation.



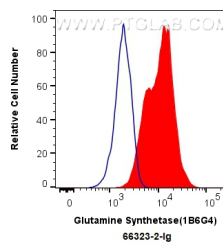
Immunohistochemical analysis of paraffin-embedded human liver cancer tissue slide using 66323-2-Ig (Glutamine Synthetase antibody) at dilution of 1:5000 (under 10x lens). Heat mediated antigen retrieval with Tris-EDTA buffer (pH 9.0). This data was developed using the same antibody clone with 66323-2-PBS in a different storage buffer formulation.



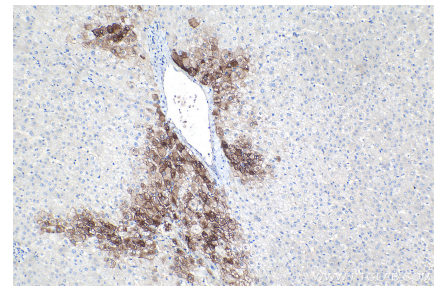
Immunohistochemical analysis of paraffin-embedded human liver cancer tissue slide using 66323-2-Ig (Glutamine Synthetase antibody) at dilution of 1:5000 (under 40x lens). Heat mediated antigen retrieval with Tris-EDTA buffer (pH 9.0). This data was developed using the same antibody clone with 66323-2-PBS in a different storage buffer formulation.



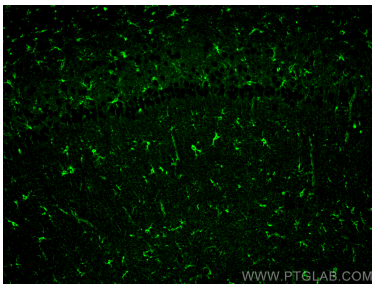
Immunofluorescent analysis of (4% PFA) fixed mouse liver tissue using Glutamine Synthetase antibody (66323-2-Ig, Clone: 1B6G4) at dilution of 1:400 and CoraLite®488-Conjugated AffiniPure Goat Anti-Mouse IgG(H+L). This data was developed using the same antibody clone with 66323-2-PBS in a different storage buffer formulation.



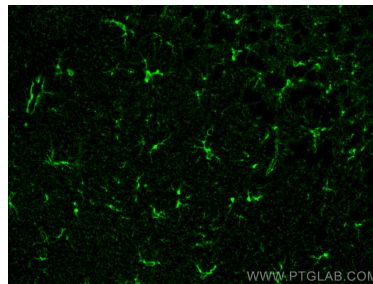
1X10⁶ HepG2 cells were intracellularly stained with 0.4 ug Anti-Human Glutamine Synthetase (66323-2-Ig, Clone:1B6G4) and CoraLite®488-Conjugated AffiniPure Goat Anti-Mouse IgG(H+L) at dilution 1:1000 (red), or 0.4 ug Mouse IgG1 Isotype Control (MOPC-21) (65124-1-Ig, Clone: MOPC-21) (blue). Cells were fixed with 4% PFA and permeabilized with Flow Cytometry Perm Buffer (PF00011-C). This data was developed using the same antibody clone with 66323-2-PBS in a



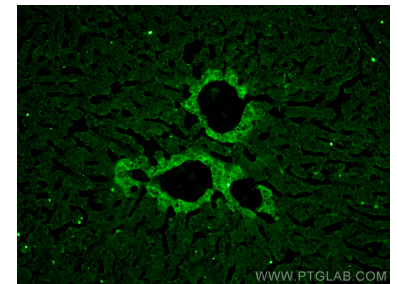
Immunohistochemical analysis of paraffin-embedded human liver tissue slide using 66323-2-Ig (Glutamine Synthetase antibody) at dilution of 1:4000 (under 10x lens). Heat mediated antigen retrieval with Tris-EDTA buffer (pH 9.0). This data was developed using the same antibody clone with 66323-2-PBS in a different storage buffer formulation.



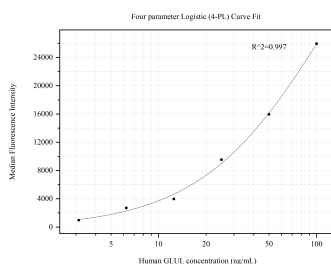
Immunofluorescent analysis of (4% PFA) fixed paraffin-embedded mouse brain tissue using Glutamine Synthetase antibody (66323-2-Ig, Clone: 1B6G4) at dilution of 1:800 and Multi-rAb CoraLite® Plus 488-Goat Anti-Mouse Recombinant Secondary Antibody (H+L) (RGAM002). Heat mediated antigen retrieval with Tris-EDTA buffer (pH 9.0). This data was developed using the same antibody clone with 66323-2-PBS in a different storage buffer formulation.



Immunofluorescent analysis of (4% PFA) fixed paraffin-embedded mouse brain tissue using Glutamine Synthetase antibody (66323-2-Ig, Clone: 1B6G4) at dilution of 1:800 and Multi-rAb CoraLite® Plus 488-Goat Anti-Mouse Recombinant Secondary Antibody (H+L) (RGAM002). Heat mediated antigen retrieval with Tris-EDTA buffer (pH 9.0). This data was developed using the same antibody clone with 66323-2-PBS in a different storage buffer formulation.



Immunofluorescent analysis of (4% PFA) fixed frozen OCT-embedded mouse liver tissue using 66323-2-Ig (Glutamine Synthetase antibody) at dilution of 1:400 and CoraLite®488-Conjugated AffiniPure Goat Anti-Mouse IgG(H+L). This data was developed using the same antibody clone with 66323-2-PBS in a different storage buffer formulation.



Cytometric bead array standard curve of MP50483-1, Glutamine synthetase Monoclonal Matched Antibody Pair, PBS Only. Capture antibody: 66323-2-PBS. Detection antibody: 66323-1-PBS. Standard:Ag6309. Range: 3.125-100 ng/mL