

For Research Use Only

Gamma Tubulin Monoclonal antibody

Catalog Number: 66320-1-Ig **29 Publications**



Basic Information

| | | |
|---|--|---|
| Catalog Number: 66320-1-Ig | GenBank Accession Number: BC000619 | Purification Method: Protein A purification |
| Concentration: 1000 µg/ml | GeneID (NCBI): 7283 | CloneNo.: 3F9H8 |
| Source: Mouse | UNIPROT ID: P23258 | Recommended Dilutions: WB 1:2000-1:12000 IHC 1:200-1:1000 IF/ICC 1:50-1:500 |
| Isotype: IgG2a | Full Name: tubulin, gamma 1 | |
| Immunogen Catalog Number: AG23913 | Calculated MW: 51 kDa | |
| | Observed MW: 48-55 kDa | |

Applications

| | |
|--|--|
| Tested Applications: WB, IHC, IF/ICC, FC (Intra), ELISA | Positive Controls: WB : NCCIT cells, HepG2 cells, EC109 cells, K-562 cells, HSCT6 cells, NIH3T3 cells IHC : human breast cancer tissue, human prostate cancer tissue IF/ICC : MDCK cells, HeLa cells, A549 cells |
| Cited Applications: WB, IF | |
| Species Specificity: human, mouse, rat, canine | |
| Cited Species: human, mouse | |
| Note-IHC: suggested antigen retrieval with TE buffer pH 9.0; (*) Alternatively, antigen retrieval may be performed with citrate buffer pH 6.0 | |

Background Information

Gamma tubulin is a member of tubulin superfamily and is a key component required for microtubule nucleation and stabilization. It is concentrated at the pericentriolar material of centrosomes in interphase cells, predominantly on spindle poles in mitotic cells, while found in midbodies during cytokinesis. Overexpression of gamma tubulin has been found in various cancers including breast cancer and gliomas. This antibody can well label the centrosome structure.

Notable Publications

| Author | Pubmed ID | Journal | Application |
|---------------------|-----------|-----------------|-------------|
| Yanli Liu | 36238304 | Front Immunol | IF |
| Emma Polonio-Alcalá | 34771484 | Cancers (Basel) | WB |
| Michaela Bosakova | 33200460 | EMBO Mol Med | IF |

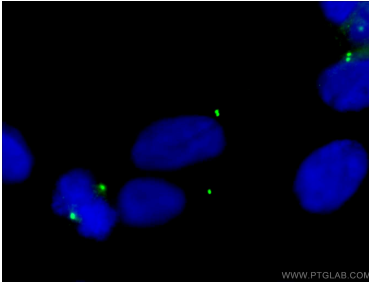
Storage

Storage:
Store at -20°C. Stable for one year after shipment.
Storage Buffer:
PBS with 0.02% sodium azide and 50% glycerol pH 7.3.
Aliquoting is unnecessary for -20°C storage

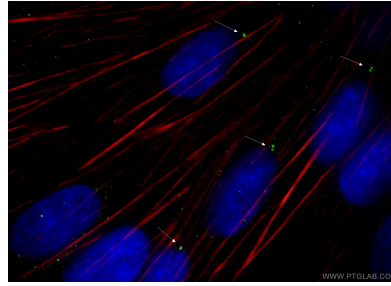
For technical support and original validation data for this product please contact:
T: 4006900926 E: Proteintech-CN@ptglab.com W: ptgcn.com

This product is exclusively available under Proteintech Group brand and is not available to purchase from any other manufacturer.

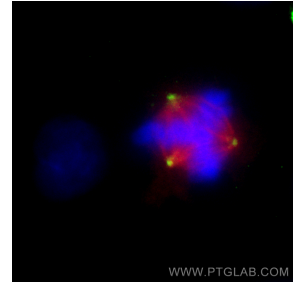
Selected Validation Data



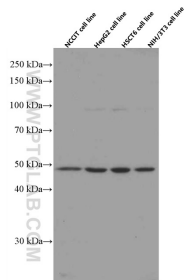
Immunofluorescent analysis of (-20°C Ethanol) fixed MDCK cells using 66320-1-Ig (gamma tubulin antibody) at dilution of 1:200 and CoraLite488-Conjugated Goat Anti-Mouse IgG(H+L).



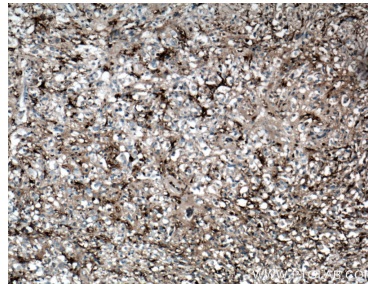
Immunofluorescent analysis of (-20°C Ethanol) fixed MDCK cells using 66320-1-Ig (gamma tubulin antibody) at dilution of 1:200 and CoraLite488-Conjugated Goat Anti-Mouse IgG(H+L).



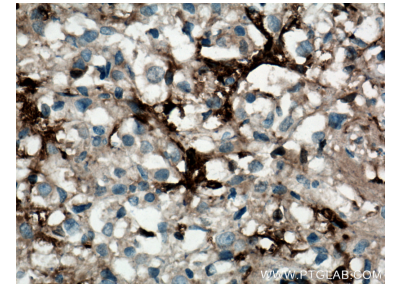
Immunofluorescent analysis of (-20°C Methanol) fixed A549 cells using Gamma Tubulin antibody (66320-1-Ig, Clone: 3F9H8) at dilution of 1:1000 and CoraLite®488-Conjugated Goat Anti-Mouse IgG(H+L), Alpha Tubulin antibody (11224-1-AP, red).



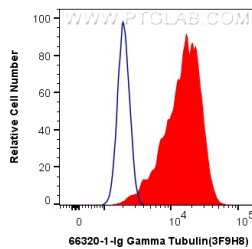
Various lysates were subjected to SDS PAGE followed by western blot with 66320-1-Ig (gamma tubulin antibody) at dilution of 1:6000 incubated at room temperature for 1.5 hours.



Immunohistochemical analysis of paraffin-embedded human breast cancer tissue slide using 66320-1-Ig (gamma tubulin antibody) at dilution of 1:500 (under 10x lens. Heat mediated antigen retrieval with Tris-EDTA buffer (pH 9.0).



Immunohistochemical analysis of paraffin-embedded human breast cancer tissue slide using 66320-1-Ig (gamma tubulin antibody) at dilution of 1:500 (under 40x lens. Heat mediated antigen retrieval with Tris-EDTA buffer (pH 9.0).



1X10⁶ HeLa cells were intracellularly stained with 0.4 ug Anti-Human Gamma Tubulin (66320-1-Ig, Clone:3F9H8) and CoraLite®488-Conjugated Goat Anti-Mouse IgG(H+L) at dilution 1:1000 (red), or 0.4 ug Mouse IgG2a Isotype Control (C1.18.4) (65208-1-Ig, Clone: C1.18.4) (blue). Cells were fixed with 4% PFA and permeabilized with Flow Cytometry Perm Buffer (PF00011-C).