

Integrin Beta 1 Monoclonal antibody

Catalog Number: 66315-1-Ig

1 Publications

Basic Information

Catalog Number:

66315-1-Ig

Size:

2300 µg/ml

Source:

Mouse

Isotype:

IgG1

Immunogen Catalog Number:

AG24476

GenBank Accession Number:

BC020057

GeneID (NCBI):

3688

ENSEMBL Gene ID:

ENSG00000150093

UNIPROT ID:

P05556

Full Name:

integrin, beta 1 (fibronectin receptor, beta polypeptide, antigen CD29 includes MDF2, MSK12)

Calculated MW:

88 kDa

Observed MW:

130 kDa

Purification Method:

Protein G purification

CloneNo.:

1A7C9

Recommended Dilutions:

WB 1:2000-1:16000

Applications

Tested Applications:

WB, ELISA

Cited Applications:

WB

Species Specificity:

human

Cited Species:

human

Positive Controls:

WB : HT-1080 cells, HUVEC cells

Background Information

Integrin beta-1 (ITGB1), also named as CD29, is a 130 kDa single chain type I glycoprotein that is expressed in a heterodimeric complex with one of six distinct α subunits, comprising the very late activation antigen (VLA) subfamily of adhesion receptors. It is one of the essential surface molecules expressed on human MSC from bone marrow and other sources. The β 1 subunit is also broadly expressed on lymphocytes and monocytes, weakly expressed on granulocytes, and not expressed on erythrocytes. These receptors are involved in a variety of cell-cell and cell-matrix interactions.

Notable Publications

Author	Pubmed ID	Journal	Application
Eun-Ah Cho	33275877	Structure	WB

Storage

Storage:

Store at -20°C. Stable for one year after shipment.

Storage Buffer:

PBS with 0.02% sodium azide and 50% glycerol pH 7.3.

Aliquoting is unnecessary for -20°C storage

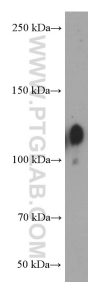
For technical support and original validation data for this product please contact:

T: 4006900926

E: Proteintech-CN@ptglab.comW: ptgcn.com

This product is exclusively available under Proteintech Group brand and is not available to purchase from any other manufacturer.

Selected Validation Data



HT-1080 cells were subjected to SDS PAGE followed by western blot with 66315-1-Ig (Integrin beta-1 Antibody) at dilution of 1:8000 incubated at room temperature for 1.5 hours.