

# TBL2 Monoclonal antibody

Catalog Number: 66307-1-Ig

## Basic Information

<b>Catalog Number:</b> 66307-1-Ig	<b>GenBank Accession Number:</b> BC012938	<b>Purification Method:</b> Thiophilic affinity chromatograph
<b>Size:</b> 500 µg/ml	<b>GeneID (NCBI):</b> 26608	<b>CloneNo.:</b> 1D5C2
<b>Source:</b> Mouse	<b>UNIPROT ID:</b> Q9Y4P3	<b>Recommended Dilutions:</b> WB 1:1000-1:4000 IHC 1:50-1:500
<b>Isotype:</b> IgA	<b>Full Name:</b> transducin (beta)-like 2	
<b>Immunogen Catalog Number:</b> AG24225	<b>Calculated MW:</b> 446 aa, 50 kDa	
	<b>Observed MW:</b> 50 kDa	

## Applications

### Tested Applications:

IHC, WB, ELISA

### Species Specificity:

human

**Note-IHC: suggested antigen retrieval with TE buffer pH 9.0; (\*) Alternatively, antigen retrieval may be performed with citrate buffer pH 6.0**

### Positive Controls:

WB : MCF-7 cells, COLO 320 cells, Jurkat cells

IHC : human liver tissue, human colon tissue

## Background Information

TBL2 belongs to a member of the beta-transducin protein family. This gene is commonly deleted in Williams-Beuren syndrome, a developmental disorder with multi-system manifestations caused by haploinsufficiency for contiguous genes deleted in chromosome region 7q11.23. TBL2 encodes a protein with four putative WD40 repeats, which may be involved in some intracellular signaling pathway.

## Storage

### Storage:

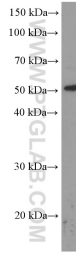
Store at -20°C. Stable for one year after shipment.

### Storage Buffer:

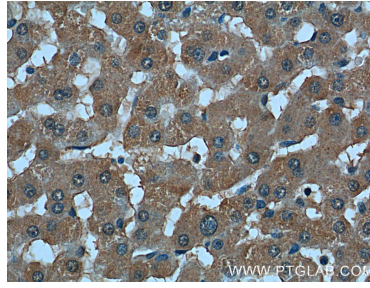
PBS with 0.02% sodium azide and 50% glycerol pH 7.3.

Aliquoting is unnecessary for -20°C storage

## Selected Validation Data



MCF-7 cells were subjected to SDS PAGE followed by western blot with 66307-1-Ig (TBL2 Antibody) at dilution of 1:2000 incubated at room temperature for 1.5 hours.



Immunohistochemical analysis of paraffin-embedded human liver tissue slide using 66307-1-Ig (TBL2 Antibody) at dilution of 1:200 (under 40x lens).