

For Research Use Only

Pan Acetylation Monoclonal antibody, PBS Only

Catalog Number: 66289-1-PBS



Basic Information

Catalog Number:

66289-1-PBS

Concentration:

1 mg/ml

Source:

Mouse

Isotype:

IgG1

GenBank Accession Number:

GeneID (NCBI):

Full Name:

Observed MW:

17 kDa

Purification Method:

Protein A purification

CloneNo.:

1D5F2

Applications

Tested Applications:

WB, IF/ICC, Indirect ELISA

Species Specificity:

chemical compound

Background Information

Acetylation and De-acetylation are the important reaction in epigenetic. Many proteins, especially Histone, are with Acetylated of Lysine. This antibody is used to detect the Acetylation of Lysine. The 17 kDa in our detection is Acetylated Histone.

Storage

Storage:

Store at -80°C.

The product is shipped with ice packs. Upon receipt, store it immediately at -80°C

Storage Buffer:

PBS Only

For technical support and original validation data for this product please contact:

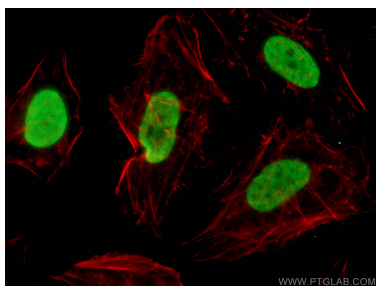
T: 4006900926

E: Proteintech-CN@ptglab.com

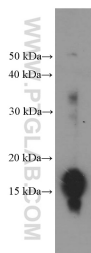
W: ptgcn.com

This product is exclusively available under Proteintech Group brand and is not available to purchase from any other manufacturer.

Selected Validation Data



Immunofluorescent analysis of (4% PFA) fixed HeLa cells using 66289-1-Ig (Pan Acetylation antibody), at dilution of 1:200 and CoraLite®488-Conjugated AffiniPure Goat Anti-Mouse IgG(H+L). This data was developed using the same antibody clone with 66289-1-PBS in a different storage buffer formulation.



HeLa cells were subjected to SDS PAGE followed by western blot with 66289-1-Ig (Pan Acetylation Antibody) at dilution of 1:1500 incubated at room temperature for 1.5 hours. This data was developed using the same antibody clone with 66289-1-PBS in a different storage buffer formulation.