

For Research Use Only

MYL3 Monoclonal antibody

Catalog Number: 66286-1-Ig **2 Publications**



Basic Information

Catalog Number: 66286-1-Ig	GenBank Accession Number: BC009790	Purification Method: Protein G purification
Concentration: 1100 µg/ml	GeneID (NCBI): 4634	CloneNo.: 2E4B2
Source: Mouse	UNIPROT ID: P08590	Recommended Dilutions: WB 1:5000-1:50000 IHC 1:20-1:200
Isotype: IgG1	Full Name: myosin, light chain 3, alkali; ventricular, skeletal, slow	
Immunogen Catalog Number: AG24535	Calculated MW: 22 kDa	
	Observed MW: 22-25 kDa	

Applications

Tested Applications: WB, IHC, ELISA	Positive Controls:
Cited Applications: WB	WB : human skeletal muscle tissue, mouse heart tissue, human heart tissue, pig heart tissue, rat heart tissue
Species Specificity: human, rat, mouse, pig	IHC : human heart tissue, human skeletal muscle tissue
Cited Species: human	
Note-IHC: suggested antigen retrieval with TE buffer pH 9.0; (*) Alternatively, antigen retrieval may be performed with citrate buffer pH 6.0	

Background Information

MYL3, also named as MLC1v, is an essential light chain of myosin that is associated with muscle contraction. It is expressed in ventricular and slow skeletal muscle. MYL3 may serve as a target for caspase-3 in dying cardiomyocytes. Mutations of MYL3 gene cause hypertrophic cardiomyopathy. MYL3 has been identified as potential serum biomarker for drug induced myotoxicity. Great increase in MYL3 serum concentration has been observed in rats with cardiac and skeletal muscle injury. (PMID:21685905)

Notable Publications

Author	Pubmed ID	Journal	Application
Yuxuan Zhang	39765829	Antioxidants (Basel)	WB
Ming Zheng	38909457	Transl Oncol	WB

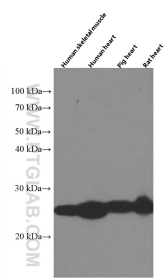
Storage

Storage:
Store at -20°C. Stable for one year after shipment.
Storage Buffer:
PBS with 0.02% sodium azide and 50% glycerol pH 7.3.
Aliquoting is unnecessary for -20°C storage

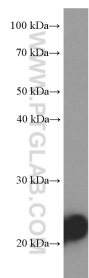
For technical support and original validation data for this product please contact:
T: 4006900926 E: Proteintech-CN@ptglab.com W: ptgcn.com

This product is exclusively available under Proteintech Group brand and is not available to purchase from any other manufacturer.

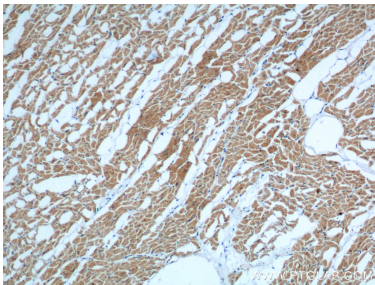
Selected Validation Data



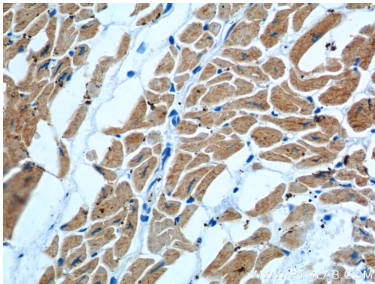
Various tissue lysates were subjected to SDS PAGE followed by western blot with 66286-1-Ig (MYL3 antibody) at dilution of 1:50000 incubated at room temperature for 1.5 hours.



human skeletal muscle tissue were subjected to SDS PAGE followed by western blot with 66286-1-Ig (MYL3 Antibody) at dilution of 1:20000 incubated at room temperature for 1.5 hours.



Immunohistochemical analysis of paraffin-embedded human heart tissue slide using 66286-1-Ig (MYL3 Antibody) at dilution of 1:600 (under 10x lens).



Immunohistochemical analysis of paraffin-embedded human heart tissue slide using 66286-1-Ig (MYL3 Antibody) at dilution of 1:600 (under 40x lens).